

# WS Series 5600 Metered Water Softeners

## Specification

Valve: Fleck 5600 Metered  
 Electrical: 24 Volt w/Transformer  
 Distributor: 1.05" O.D.  
 Connection: 3/4" or 1" Stainless Bypass  
 Media: 8% or 10% resin

## Product Features

Simple mechanical design is easy to understand  
 Non-corrosive, UV-resistant Noryl Valve body  
 Easily serviced  
 The best selling control ever  
 Designed with double backwash  
 Space Saving Square or Larger Round Brine Tanks



RO Accessories

## Full Jacket Stainless

Model number	App. capacity @ 6 lbs. per cu. ft.	App. capacity @ 15 lbs. per cu. ft.	Mineral tank size	Brine tank size	Recommended service flow	EST. Peak flow	Cu. Ft. resin
WS-1000MF	20000	30000	9X48	18X30	1.3-8 GPM	10 GPM	1
WS-1500MF	30000	45000	10X54	18X30	1.6-10 GPM	10 GPM	1.5
WS-2000MF	40000	60000	12X52	18X30	2.3-12 GPM	12 GPM	2

RO Systems

## Stainless Jacket w/Cap

Model number	App. capacity @ 6 lbs. per cu. ft.	App. capacity @ 15 lbs. per cu. ft.	Mineral tank size	Brine tank size	Recommended service flow	EST. Peak flow	Cu. Ft. resin
WS-1000MH	20000	30000	9X48	18X30	1.3-8 GPM	10 GPM	1
WS-1500MH	30000	45000	10X54	18X30	1.6-10 GPM	10 GPM	1.5
WS-2000MH	40000	60000	12X52	18X30	2.3-12 GPM	12 GPM	2

DMT Fittings

## No Jacket

Model number	App. capacity @ 6 lbs. per cu. ft.	App. capacity @ 15 lbs. per cu. ft.	Mineral tank size	Brine tank size	Recommended service flow	EST. Peak flow	Cu. Ft. resin
WS-1000MN	20000	30000	9X48	18X30	1.3-8 GPM	10 GPM	1
WS-1500MN	30000	45000	10X54	18X30	1.6-10 GPM	10 GPM	1.5
WS-2000MN	40000	60000	12X52	18X30	2.3-12 GPM	12 GPM	2

Water Softeners

MADE IN THE  
USA  
OF FOREIGN & DOMESTIC PARTS



**Pentair  
FLECK**



## 5810 Control Valves *High Performance*

### FEATURES • BENEFITS

- Fiber-reinforced polymer valve body for superior strength and durability, non-corrosive, and UV-resistant
- continuous service flow rate of 36 GPM with a backwash of 28 GPM
- Backwash capability accommodates softener tanks and filters up to 2" in diameter
- Fully adjustable 3- or 5-cycle control for efficient and reliable water treatment system
- Time-tested, hydraulically-balanced piston for service and regeneration
- Optical sensor for precision cycle positioning
- soft water refill for a cleaner brine tank
- Designed with double backwash for reduced hardness leakage
- Diagnostics for historical valve performance
- Programming stored in memory and will not be lost due to power outages

### Operating Specifications

#### VALVE SPECIFICATIONS

Valve Material	Fiber-reinforced polymer
Inlet/Outlet	3/4", 1", or 1-1/4" NPT, BSP, Sweat, CPVC
Cycles	5

#### FLOW RATES (50 PSI INLET) – VALVE ALONE

Piston	Downflow	Upflow	Filter
Continuous	36 GPM	35 GPM	31 GPM
(15 psi drop)	8.2 m3/hr	7.9 m3/hr	7.0 m3/hr
Peak	47 GPM	45 GPM	40 GPM
(25 psi drop)	10.6 m3/hr	10.1 m3/hr	9.0 m3/hr

Cv (flow at 1 psi drop)	9.4	8.9	8.0
Max. Backwash (25 psi drop)	28 GPM 6.3 m3/hr	30 GPM 6.9 m3/hr	33 GPM 7.5 m3/hr

#### REGENERATION

Downflow/Upflow	Both
Adjustable Cycles	Yes Timers Available
Time Available	
SXT:	0 - 199 min/cycle
XTR2:	0 - 240 min/cycle

#### METER INFORMATION

Downflow/Upflow	
Meter Accuracy	
1-1/4" Turbine:	2 - 40 GPM ± 5% (0.45 - 9 m3/h)
Meter Capacity Range	
SXT:	1 - 999,900 gal (0 - 3,785 m3)
XTR2:	1 - 9,999,999 gal (0 - 378,541 m3)

### CONFIGURATIONS • OPTIONS

- Filter or softener control valves
- Downflow co-current or upflow counter-current regeneration
- Plumbing connections in 3/4" to 1-1/4" NPT, BSP, Sweat, and CPVC
- fiber-reinforced polymer high-flow bypass valve
- variable reserve for increased efficiency
- Programmable regeneration types for increased flexibility
- Please visit [pentair.com/connectedsoftener](http://pentair.com/connectedsoftener) for more information on Pentair Home and Pentair Pro Apps
- Three color bezel options of black, blue, and silver

#### TIMER OPTIONS

- XTR2 - Premium touch screen LCD display with two programmable relay outputs for both normally opened and normally closed contacts
- SXT - Large LCD display with one programmable relay output for both normally open and normally closed contacts

#### DIMENSIONS

Distributor Pilot	1.05" O.D. (26.7 mm) 32 mm O.D.
Drain Line	1.315" O.D. (33.4 mm) 3/4" or 1" NPT Quick Connect
Brine Valve	
1600:	3/8" or 1/2"
Injector System	1610
Mounting Base	2.5" – 8 NPSM
Height from Top of Tank	11.3" (287 mm)
11.3" (287 mm)	1/4" Below top of tank

#### TYPICAL APPLICATIONS

Water Softener	8 - 21" Diameter (limited by maximum injector size)
Filter	8" - 16" diameter (based on 10 GPM per sq. ft.)
Filters	8 - 21" Diameter based on 10 GPM/ft2

#### ADDITIONAL INFORMATION

Electrical Rating	12 Volts DC
Estimated Shipping Weight	11 lbs (4.99 kg) Pressure
Pressure	300 psi
Hydrostatic:	(20 bar)
Working:	20 - 125 psi (1.4 - 8.5 bar)
Temperature	
Cold Water Valve:	34 - 110°F (1 - 43°C)

RO Accessories

RO Systems

DMT Fittings

Water Softeners



TESTED and CERTIFIED by the WQA to NSF/ANSI Standard 44 for Water Softener Performance.



UL recognized to the 979



TESTED and CERTIFIED by the WQA to NSF/ANSI Standard 372 for Lead Free Compliance.



TESTED EMC and Low Voltage Directive



Restriction of Hazardous Substance Compliant

## 5810SXT Metered Softeners

### Specifications:

Includes Hi-Flow plastic bypass and 1" plumbing connectors

WQA Gold Seal Certified 8% crosslink resin, 10% available.

12 Volt DC drive w/ transformer

High Flow heavy duty bottom screen, 32mm pipe

Fully programmed

Optional plumbing connectors available,

1" - 1.5" threaded and sweat

**FULL JACKET STAINLESS**



MODEL NUMBER	App. Capacity @ 6 lbs per sg. Ft.	App. Capacity @ 15 lbs per sg. Ft.	Mineral Tank Sizes	Brine tank Size	Cu. Ft. resin	Recommended Service Flow GPM
WS-1000MF-5810S	20000	30000	9x48	18x30	1	1.3-8
WS-1500MF-5810S	30000	45000	10x54	18x30	1.5	1.6-10
WS-2000MF-5810S	40000	60000	12x52	18x30	2	2.3-15

### STAINLESS JACKET W/CAP

MODEL NUMBER	App. Capacity @ 6 lbs per sg. Ft.	App. Capacity @ 15 lbs per sg. Ft.	Mineral Tank Sizes	Brine tank Size	Cu. Ft. resin	Recommended Service Flow GPM
WS-1000MH-5810S	20000	30000	9x48	18x30	1	1.3-8
WS-1500MH-5810S	30000	45000	10x54	18x30	1.5	1.6-10
WS-2000MH-5810S	40000	60000	12x52	18x30	2	2.3-15

### NO JACKET

MODEL NUMBER	App. Capacity @ 6 lbs per sg. Ft.	App. Capacity @ 15 lbs per sg. Ft.	Mineral Tank Sizes	Brine tank Size	Cu. Ft. resin	Recommended Service Flow GPM
WS-1000MN-5810S	20000	30000	9x48	18x30	1	1.3-8
WS-1500MN-5810S	30000	45000	10x54	18x30	1.5	1.6-10
WS-2000MN-5810S	40000	60000	12x52	18x30	2	2.3-15





## RESIDENTIAL CONTROL VALVES

# Fleck® 5800 Control Valves

## High Performance



### Features

- Excellent service rates (21 GPM or 4.8 m<sup>3</sup>/h continuous, 27 GPM or 6.1 m<sup>3</sup>/h peak) and backwash flow rate (17 GPM or 3.9 m<sup>3</sup>/h @ 25psi ΔP)
- Fast positioning reversible 10,000 RPM 12 volt DC drive motor
- Seal and spacer cartridge for easy servicing
- LCD - Backlit display that helps during low light conditions
- Precision cycle positioning using optical sensor
- Soft water refill for better brine saturation and cleaner brine tank
- Three styles of electronic timers to choose from: LXT, SXT and XTR
- Programming is stored in memory and will not be lost due to power outages
- Time of day backup for up to 12 hours of power loss

### Options

- Upflow or countercurrent regeneration
- Downflow or co-current regeneration
- Backwashing filter
- Fiber-reinforced polymer or stainless steel bypass valve
- Metered- or Time Clock-initiated regeneration
- Plumbing yoke connections in 3/4" to 1-1/4" NPT, BSP and Sweat
- LXT Timer- Easiest to program, only 2 - 4 parameters to program based on filter or softener
  - Midsize, blue backlit LCD display
  - Preprogrammed for Time Clock or Meter valve
- SXT Timer- Increased flexibility, set cycle steps
  - Large, blue backlit LCD display
  - Ability to change programming: Time Clock or Meter and filter or softener
- XTR Timer- Optimal flexibility, program parameters with ease
  - Touch screen display
  - Programmable auxiliary relay output with normally open and normally closed contacts

## Operating Specifications

### VALVE SPECIFICATIONS

Valve Material	Fiber-reinforced polymer
Inlet/Outlet	3/4" to 1-1/4"
Cycles	5

### FLOW RATES (50 PSI, 3.4 BAR INLET) - VALVE ALONE

Continuous (15 psi drop)	21 GPM	4,8 m <sup>3</sup> /h
Peak (25 psi drop)	27 GPM	6,1 m <sup>3</sup> /h
Cv (flow at 1 psi drop)	5.4	
Max. Backwash (25 psi drop)	17 GPM	3,9 m <sup>3</sup> /h

### REGENERATION

Downflow/Upflow	Both
Adjustable Cycles	Yes – SXT and XTR
Time Available	LXT: Minutes calculated SXT: 0 - 199 minutes per cycle XTR: 0 - 240 minutes per cycle

### METER INFORMATION

Meter Accuracy	.25 - 15 GPM +/- 5%
Meter Capacity Range (gal.)	LXT: Volume calculated SXT: 1 - 999,900 XTR2: 1 - 9,900,000

### DIMENSIONS

Distributor Pilot	1.05" O.D., 26,7mm
Drain Line	1/2" O.D.
Injector Brine System	1600
Brine Line	3/8"
Mounting Base	2.5" - 8 NPSM
Height from Top of Tank	9", 228mm

### TYPICAL APPLICATIONS

Water Softener	6" - 16" diameter (limited by maximum injector size)
Filter	8" - 16" diameter (based on 10 GPM per sq. ft.)

### ADDITIONAL INFORMATION

Electrical Rating	12 Volts DC
Estimated Shipping Weight	Time Clock: 7 lbs. Metered Valve: 10 lbs.
Pressure	Hydrostatic: 300 psi, 20 bar Working: 20 - 125 psi, 1,4 - 8,5 bar
Temperature	34°-110°F, 1°-43°C

# 5800LXT Metered Softeners

## Specifications:

Includes Hi-Flow plastic bypass and 1" plumbing connectors

WQA Gold Seal Certified 8% crosslink resin, 10% available.

12 Volt DC drive w/ transformer

High Flow heavy duty bottom screen, 1.05"

Fully programmed

Optional plumbing connectors available,

3/4" - 1" threaded and sweat



## FULL JACKET STAINLESS

MODEL NUMBER	App. Capacity @ 6 pounds per cu. Ft.	App. Capacity @15 pounds per cu. Ft.	Mineral Tank Sizes	Brine tank Size	Recommended Service Flow GPM	Est. Peak Flow	Cu. Ft. resin
WS-1000MF-58LXT	20000	30000	9x48	18x30	1.3-8	12	1
WS-1500MF-58LXT	30000	45000	10x54	18x30	1.6-10	14	1.5
WS-2000MF-58LXT	40000	60000	12x52	18x30	2.3-15	16	2

## STAINLESS JACKET W/CAP

MODEL NUMBER	App. Capacity @ 6 pounds per cu. Ft.	App. Capacity @15 pounds per cu. Ft.	Mineral Tank Sizes	Brine tank Size	Recommended Service Flow GPM	Est. Peak Flow	Cu. Ft. resin
WS-1000MH-58LXT	20000	30000	9x48	18x30	1.3-8	12	1
WS-1500MH-58LXT	30000	45000	10x54	18x30	1.6-10	14	1.5
WS-2000MH-58LXT	40000	60000	12x52	18x30	2.3-15	16	2

## NO JACKET

MODEL NUMBER	App. Capacity @ 6 pounds per cu. Ft.	App. Capacity @15 pounds per cu. Ft.	Mineral Tank Sizes	Brine tank Size	Recommended Service Flow GPM	Est. Peak Flow	Cu. Ft. resin
WS-1000MN-58LXT	20000	30000	9x48	18x30	1.3-8	12	1
WS-1500MN-58LXT	30000	45000	10x54	18x30	1.6-10	14	1.5
WS-2000MN-58LXT	40000	60000	12x52	18x30	2.3-15	16	2
WS-2500MN-58LXT	50000	75000	13x54	18x40, 21X35	2.8-18	18	2.5

PureGen can custom build your softeners including specialty medias, private label boxing and more. Tank Jackets available for all systems.

# WS Series 5600SXT Metered Water Softeners

## Specification

Valve: Fleck 5600SXT Metered  
 Electrical: 24 Volt w/Transformer  
 Distributor: 1.05" O.D.  
 Connection: 3/4" or 1" stainless bypass  
 Media: 8% or 10% resin  
 Space Saving Square or Larger Round Brine Tanks



## Full Jacket Stainless

Model number	App. capacity @ 6 lbs. per cu. ft.	App. capacity @ 15 lbs. per cu. ft.	Mineral tank size	Brine tank size	Recommended service flow	EST. Peak flow	Cu. Ft. resin
WS-1000MF-56SXT	20000	30000	9X48	18X30	1.3-8 GPM	10 GPM	1
WS-1500MF-56SXT	30000	45000	10X54	18X30	1.6-10 GPM	10 GPM	1.5
WS-2000MF-56SXT	40000	60000	12X52	18X30	2.3-12 GPM	12 GPM	2

## Stainless Jacket w/Cap

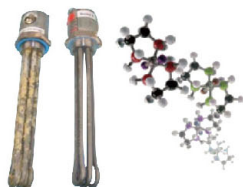
Model number	App. capacity @ 6 lbs. per cu. ft.	App. capacity @ 15 lbs. per cu. ft.	Mineral tank size	Brine tank size	Recommended service flow	EST. Peak flow	Cu. Ft. resin
WS-1000MH-56SXT	20000	30000	9X48	18X30	1.3-8 GPM	10 GPM	1
WS-1500MH-56SXT	30000	45000	10X54	18X30	1.6-10 GPM	10 GPM	1.5
WS-2000MH-56SXT	40000	60000	12X52	18X30	2.3-12 GPM	12 GPM	2

## No Jacket

Model number	App. capacity @ 6 lbs. per cu. ft.	App. capacity @ 15 lbs. per cu. ft.	Mineral tank size	Brine tank size	Recommended service flow	EST. Peak flow	Cu. Ft. resin
WS-1000MN-56SXT	20000	30000	9X48	18X30	1.3-8 GPM	10 GPM	1
WS-1500MN-56SXT	30000	45000	10X54	18X30	1.6-10 GPM	10 GPM	1.5
WS-2000MN-56SXT	40000	60000	12X52	18X30	2.3-12 GPM	12 GPM	2

# “SAFE” Anti-Scale Water Conditioners

The “SAFE” system from PureGen prevents the negative effects of calcium and magnesium scaling, while retaining the positive, healthful benefits. The anti-scale media prevents "hard" scale, the damaging scale that sticks to pipes, valves and appliances. It does this by converting dissolved hardness minerals into harmless, "soft" scale crystals. "Soft" scale crystals (Nano Crystals) stay suspended and are less likely to stick to plumbing imperfections. "Soft" scale crystals can be wiped away without the use of dangerous chemicals. No wasted water, salt, or electricity.



- S alt Free
- A nti-Scale
- F ive Year Media Life
- E nvironmentally Friendly

## SAFE w/ Clack 1400 In/Out, bypass, and 1" plumbing connectors.

Model #	Hardness	Tank Size	Flow Rate Max.
SAFE-4000-12	0-25 GPG	9X48	12 GPM
SAFE-5000-12	26-45 GPG	9X48	12 GPM
SAFE-6000-12	46-100 GPG	9X48	12 GPM
SAFE-4500-15	0-25 GPG	10X54	15 GPM
SAFE-5500-15	26-45 GPG	10X54	15 GPM
SAFE-6750-15	46-100 GPG	10X54	15 GPM
SAFE-6500-20	0-25 GPG	12X52	20 GPM
SAFE-7500-20	26-45 GPG	12X52	20 GPM
SAFE-9750-20	46-100 GPG	12X52	20 GPM



## SAFE w/ commercial 1-1/2" In/Out head

Model #	Hardness	Tank Size	Flow Rate Max.
SAFE-6500-20-1	0-25 GPG	12X52	20 GPM
SAFE-7500-20-1	26-45 GPG	12X52	20 GPM
SAFE-9750-20-1	46-100 GPG	12X52	20 GPM

shown w/ optional tank jacket

RO Accessories

RO Systems

DMT Fittings

Water Softeners

All Anti-Scale media systems should be pre-treated to remove chlorine, chloramine, iron, manganese, copper, and other water impurities that may foul or damage the media. Please contact PureGen technical support for details.

# Hydromagnetic 500



WS-MAG500 1.05" module

The Hydromagnetic 500 water conditioning module was designed to deliver the highest magnetic pulling force at a reasonable price. We use only Rare Earth Neodymium Magnets with a combined magnetic pulling force of over 300 pounds in each module. As the water enters the conditioning chamber it is redirected 90 degrees to cause a slight pressure drop which enhances the effects of the magnetic conditioning. The water then flows around the magnetic module and is subjected to a series of reversing-polarity permanent magnetic fields. All components that contact the water during this process are manufactured with NSF listed components. Magnetic conditioning has a long and successful history of treating water in both residential and industrial applications including cooling towers, closed loop chilled water systems, heating hot water systems and boiler treatment. No chemicals or salt to add, no polluting chemicals to drain, and no electricity to operate makes this technology truly green. Manufactured in the USA to ensure quality and consistency.

1.05" standard, use with most standard bottom screens. Other sizes available.

1.05" connector, simply insert your distributor tube, no adapters needed.

## 1"HydroMag



The inlet water makes a 90 degree turn causing a very slight pressure drop starting the conditioning process

Reversing-polarity permanent magnetic fields with over 300 pounds of pulling force!

Conditioned water exits the system. Our high flow design flows over 20GPM. The water only touches NSF listed components for your customers safety



# Tanks Filled With Media

Makes field service easy and quick. No more messy media change-outs in the field. Simply change the whole tank. Units include the tank, media, gravel underbed, manifold, boxed and includes a specialized shipping cap designed to keep the manifold in place without getting media inside of it. Available in many popular configurations!



TANK SEAL

<b>Softner Resin, No Jacket</b>		
WS-1000N	1 Cu. Ft.	9x48
WS-1500N	1.5 Cu. Ft.	10x54
WS-2000N	2 Cu. Ft.	12x52
<b>Softner Resin, Jacket w/ Plastic Cap</b>		
WS-1000H	1 Cu. Ft.	9x48
WS-1500H	1.5 Cu. Ft.	10x54
WS-2000H	2 Cu. Ft.	12x52
<b>Softner Resin, Fully Welded S.S. Jacket</b>		
WS-1000F	1 Cu. Ft.	9x48
WS-1500F	1.5 Cu. Ft.	10x54
WS-2000F	2 Cu. Ft.	12x52
<b>GAC, Coconut Shell, No Jacket</b>		
CF-1000N	1 Cu. Ft.	9x48
CF-1500N	1.5 Cu. Ft.	10x54
CF-2000N	2 Cu. Ft.	12x52
<b>GAC, Coconut Shell, Jacket w/ Plastic Cap</b>		
CF-1000H	1 Cu. Ft.	9x48
CF-1500H	1.5 Cu. Ft.	10x54
CF-2000H	2 Cu. Ft.	12x52
<b>GAC, Coconut Shell, Fully Welded S.S. Jacket</b>		
CF-1000F	1 Cu. Ft.	9x48
CF-1500F	1.5 Cu. Ft.	10x54
CF-2000F	2 Cu. Ft.	12x52

<b>PART NO.</b>	<b>Description</b>
WS-C25-S	2.5" TANK CAP SEAL

RO Accessories

RO Systems

DMT Fittings

Water Softeners

## In/Out Heads



Part #	Description	Tank Thread	Pipe Size In/Out	Riser	Bypass
WS-D1400	High Flow Clack 1400	2-1/2"-8NPSM	see Clack parts	1.05"	Optional

## Mineral Tank Accessories

Bottom Screens, stack distributors, hub and laterals, and other mineral tank components are one of the most important parts of your system. PureGen offers many different sizes and styles to meet your needs.



WS-40922  
WS-40924



WS-18280

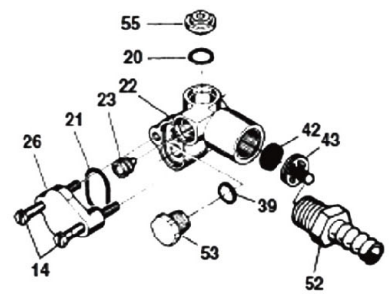
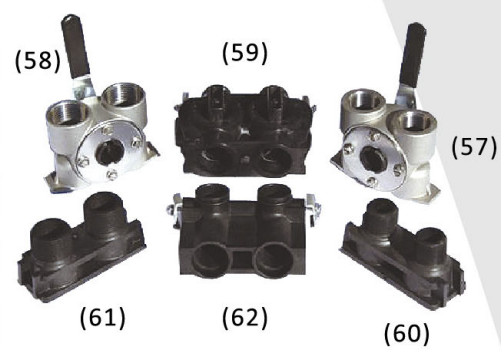
### Top & Bottom Screens and Pipe for Top Mount Valves

Part#	Pipe Size	Description
WS-40922	1.05" (3/4" NPT)	Best quality, fine mesh, high flow, used on all 1.05" PureGen units, bottom screen
WS-18280	1.05" (3/4" NPT)	Fleck specific cam lock top screen
PIPE-O1	1.05"	54" length, our special Grey PVC pipe, durable and attractive
WS-1.05MANIFOLD	1.05" (3/4" NPT)	WS-40922 and PIPE-O1, for 2.5 Cu. Ft. systems and smaller
WS-32MANIFOLD	32 mm	WS-40924 and WS-40677-54, for 2.5 Cu. Ft. systems and smaller

# Fleck 5600,5600SXT, Installation & Repair Parts

\* special order

3/4" S.S bypass	(57)	BPV-3400
1" S.S. bypass	(58)	BPV-1000
S.S. bypass Seal	(58)	WS-14105
Plastic bypass	(59)	WS-60049
3/4" plastic NPT yoke	(60)	WS-18706-02
1" plastic NPT yoke	(61)	WS-18706
* 3/4" sweat yoke		WS-13708-45
1" sweat yoke		WS-13708-40
* 1-1/4" sweat yoke		WS-40636-49
* elbow adapter, 90 degree w/ clips	(62)	WS-19620-01
* Softener piston	(8-12)	WS-60102-00
* Softener piston, low water	(8-12)	WS-60102-20
* Filter piston	(8-12)	WS-60102-10
* Main gear	(56)	WS-13170
* Seal kit	(7)	WS-60125
* Brine valve	(27-34)	WS-60032
* Meter cover std.		WS-14038
* Drain o-ring	(18)	WS-12638
* O-ring, injector (2)	(19)	WS-13301
* O-ring, injector cover	(21)	WS-13303
* O-ring, Brine valve	(20)	WS-13302
* 24V.motor		WS-19659-1
* 110V.motor		WS-18743-1
5600 rebuild kit		WS-5600REBUILD
* 5600SXT piston assy, downflow		WS-60102-71
* Mechanical meter assembly		WS-60086
* Electronic meter assy for 5600SXT, mini		WS-19797
* Electronic meter assy for 5600SXT, paddle		WS-60086-50
* 5600 powerhead assembly metered 24 volt		WS-5600PH-M-24
* 5600 powerhead assembly metered 110 volt		WS-5600PH-M-110

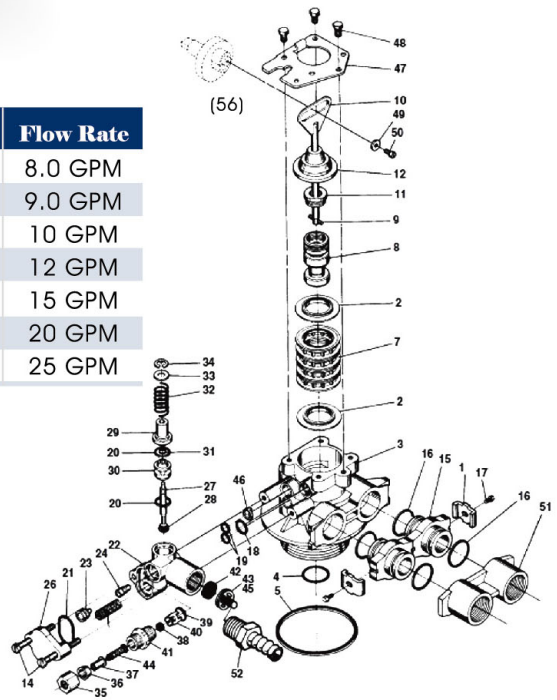


Backwash Filter Injector Option

## Fleck DLFC Buttons

\* All parts below are special order

DLFC Buttons	Size	Flow Rate	DLFC Buttons	Size	Flow Rate
WS-19153	.69"	.6 GPM	WS-17943	.95"	8.0 GPM
WS-19152	.69"	.8 GPM	WS-17944	.95"	9.0 GPM
WS-19151	.69"	1.0 GPM	WS-16529	.95"	10 GPM
WS-12085	.69"	1.2 GPM	WS-16735	.95"	12 GPM
WS-19159	.69"	1.3 GPM	WS-16736	.95"	15 GPM
WS-12086	.69"	1.5 GPM	WS-16528	.95"	20 GPM
WS-19149	.69"	1.7 GPM	WS-16737	.95"	25 GPM
WS-12087	.69"	2.0 GPM			
WS-12088	.69"	2.4 GPM			
WS-12089	.69"	3.0 GPM			
WS-12090	.69"	3.5 GPM			
WS-12091	.69"	4.0 GPM			
WS-19174	.69"	4.5 GPM			
WS-12092	.69"	5.0 GPM			
WS-17814	.69"	6.0 GPM			
WS-12408	.69"	7.0 GPM			



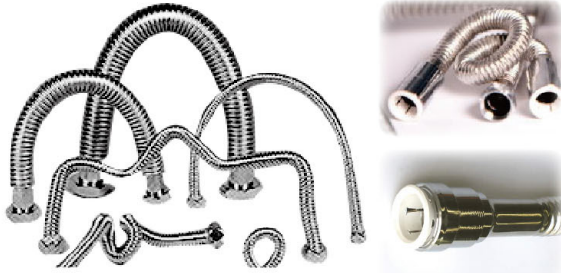
RO Accessories

RO Systems

DMT Fittings

Water Softeners

# Falcon Stainless



WS-FF-15

## 3/4" FIP X 3/4" FIP Connectors

Part #	Length
WS-FF-12	12"
WS-FF-15	15"
WS-FF-18	18"
WS-FF-24	24"
WS-FF-36*	36"
WS-FF-48*	48"



WS-PTC23-JG-18

## John Guest X FIP

Part #	Length
WS-PTC34-JG-18	3/4" x 18"
WS-PTC34-JG-24	3/4" x 24"
WS-PC1JG-IN	1" x 18"



WS-SWC1-24

## \* Special order

### 1" FIP X 1" FIP Connectors

Part #	Length
WS-SWC1-12	12"
WS-SWC1-18	18"
WS-SWC1-24	24"
WS-SWC1-36*	36"
WS-SWC1-48*	48"

## Benefits & Features

304 Series corrugated stainless steel  
Ease of installation saves time & money  
No rubber or plastic hose to reduce flow  
Largest inner diameter for required GPM  
No deformity in curvature, will hold bend  
Manufactured to US Military/  
Aerospace specifications

## 1-1/4" FIP X 1-1/4" FIP Connectors

Part #	Length
WS-SWC114-18	18"
WS-SWC114-24	24"



## 1-1/2" FIP X 1-1/2" FIP Connector

Part #	Length
WS-SWC112-18	18"
WS-SWC112-24	24"

## 2" FIP X 2" FIP Connector

Part #	Length
WS-SWC2-18	18"
WS-SWC2-24	24"



WS-SWC2-18

Falcon stainless flows 17% more than copper flex, 31% more than other 3/4" CSS connectors, and 134% more than braided.

Save time and money on installations. Falcon Stainless connectors help you meet vessel manufacturer requirements for a flexible connection between the hard piping and tank openings.

\*Special order only, not a stock item.

# Tank Jackets

No cheap plastic wrap tank jackets here.  
Only high quality USA made tank jackets in 5 styles

“430 bright stainless” is technically stainless steel. When installed outside or in wet, salt air environments it can show some signs of corrosion over time. A periodic coat of car wax will help prolong the mirror like finish. We recommend using the 304 stainless steel in harsh environments.



Crimped w/ plastic cap

Part#	Description
JC-0948-W/CAP	9X48 430 Bright Stainless, Crimped with Plastic Cap
JC-1054-W/CAP	10X54 430 Bright Stainless, Crimped with Plastic Cap
JC-1252-W/CAP	12X52 430 Bright Stainless, Crimped with Plastic Cap
JC-1354-W/CAP	13X54 430 Bright Stainless, Crimped with Plastic Cap
JC-0948-FX	9X48 430 Bright Stainless Fully Welded
JC-1054-FX	10X54 430 Bright Stainless Fully Welded
JC-1252-FX	12X52 430 Bright Stainless Fully Welded
JC-10-CAP	10" black plastic jacket cap
JC-12-CAP	12" black plastic jacket cap

## Brine Tanks

Brine tanks are made of polyethylene to ensure years of trouble free service. All of brine tanks include a 3/8" safety float assembly, brine grid, and a locking lid. The nestable design allows up to 5 brine tanks to be boxed together for easier and more economical shipping.



Part #	Description	Capacity	Salt capacity
BT-PG1313-BK	13"X13"X34" black, square	18 gal	175 lbs.
BT-PG1515-BK	15"X15"X34" black, square	26 gal	225 lbs.
BT-PG1830-BK	18"X30" black round	26 gal	225 lbs.
BT-PE1840-BK-1	18"X40" black, round, 3/8" safety	44 gal	425 lbs.



- Attractive heavy-duty design
- Blow-molded from FDA-approved high density polyethylene to give exceptional stress crack-resistant properties for years of trouble-free service
- Packaged in protective, durable shipping carton
- Optional injection molded salt grid promotes uniform brining and reduces salt bridging
- Brine tanks available in different colors by special order only. Blue, Almond, white, Platinum

## Structural Poly Glass



### Features

- Slim diameter with capacities from 2-to 49 gallons
  - Unmatched for strength and chemical resistance
  - Easy to handle and install
  - Inner shell of polyethylene
- Threaded inlet available in various sizes

### Operating Parameters

- Safety factor: 4:1
- Minimum burst at 600psi
- Tested to 250,000 cycles without leakage

PART NO.	Size	Opening	Gal	Cu.Ft.	Bulk qty / weight
PFX-0948-25-BK	9"X48"	2.5"	10.9	1.58	16/ 207 lbs.
PFX-1054-25-BK	10"X54"	2.5"	16.4	2.19	16/ 237 lbs.
PFX-1252-25-BK	12"X52"	2.5"	22.2	2.97	9/ 176 lbs.
PFM-1354-25-BK	13"X54"	2.5"	27.5	3.68	9/ 256 lbs.

\* ONLY AVAILABLE IN BLACK

# Softening Resin

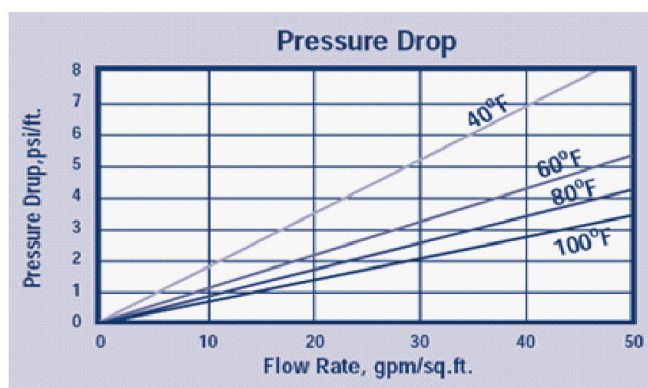
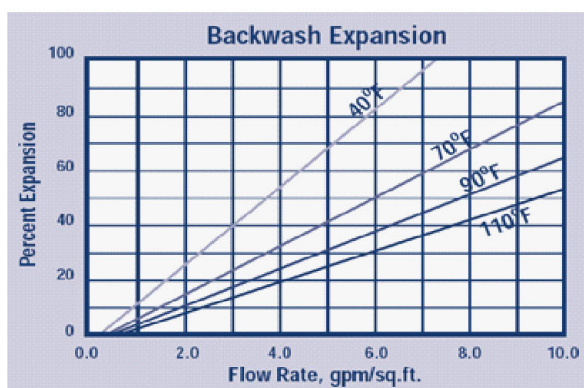
## C-PC003 8% WQA Gold Seal Certified

PureGen does not compromise on the quality of our water softener resin. C-PC003 is a high purity premium grade, high capacity, gelular, sulfonated, polystyrene cation resin supplied in the sodium form as moist, tough, uniform, spherical beads. PC003 is intended for use in all water softening, dealcalization, deionization and chemical processing applications.



## C-PC005 10% Softening Resin

Upgrade to a 10% crosslink resin for applications that have chlorinated water supplies. This oxidation resistant high capacity softening resin is a popular upgrade for customers who demand the best quality at a reasonable price.



Part #	Description	Pallet Qty
C-PC003	1 Cu. Ft. WQA Gold Seal 8% crosslink softening resin	40
C-PC005	1 Cu. Ft. 10% Crosslink resin	40

We can source resin by the container for you. Contact PureGen for your consolidated container sourcing needs.

Fig. 3 OPERATING CAPACITY, CB  
REGENERATION LEVEL NaCl, lb/ft<sup>3</sup>

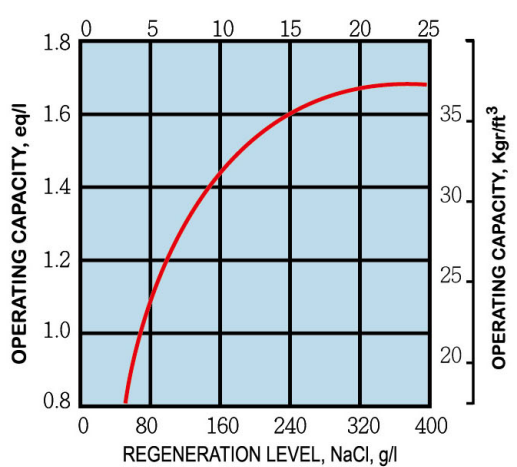
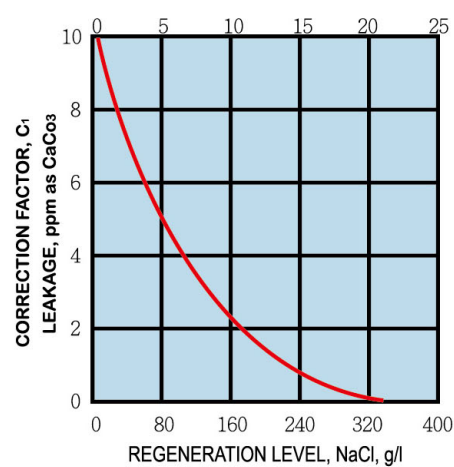


Fig. 5 HARDNESS LEAKAGE  
REGENERATION LEVEL NaCl, lb/ft<sup>3</sup>



RO Accessories

RO Systems

DMT Fittings

Water Softeners

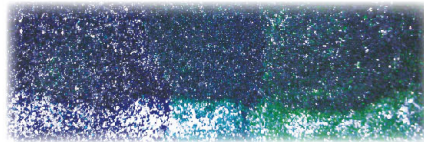
# Specialty Resins

PureGen stocks many popular resins for specialty applications. Ion exchange resins are available for troubled waters including Nitrate and Tannin removal, water purification, and much more. We are able to source many more resins to meet your specific needs. Please contact PureGen for more details.

PureGen Mixed Bed D.I. resin is an excellent choice for your water purification needs. Economical, high capacity and low odor. This high quality resin mixture is for direct purification of water. The residuals produce an average conductivity value of about 0.1us/cm for a major portion of the service run which may be extended depending up on the final water quality acceptable.

PureGen Nuclear Grade Mixed Bed D.I. is popular for most applications. This resin can produce water quality in excess of 15-18 MΩ (megohm). This media is an excellent choice for polishing R.O. water. Our special manufacturing process minimizes the odor common with lower grade D.I. resins.

PureGen Color Changing Mixed Bed D.I. Resin changes from green to blue when the media is exhausted. This media is commonly used in the Aquarium and Hydroponics industries. PureGen stocks several clear filter housings and empty refillable cartridges that are ideal for use with this resin.



Color Change Resin changes from green to blue as the DI capacity is depleted.

Part#	Description	Brand	Weight
WS-MBDI	Deionization, standard grade common for mobile car detailers	PureGen	50
WS-MBDI-NG	Nuclear Grade D.I resin. Ultra high purity	PureGen	50
WS-MBDI-CC	Color changing D.I. resin, common for aquarium use	PureGen	50



# KDF 55 & KDF 85

## KDF 55 Medium

Designed specifically for removing or reducing chlorine and water-soluble heavy metals. It controls scale, bacteria and algae, even in hot water.

The process medium recently received NSF International Certification and is certified by NSF to NSF/ANSI Standard 42 – Drinking Water Treatment Units – Aesthetic Effects. This medium is also in compliance with California’s Health and Safety Code Section 166875 (or commonly know as AB1953) and Vermont Act 193.

## KDF 85 Medium

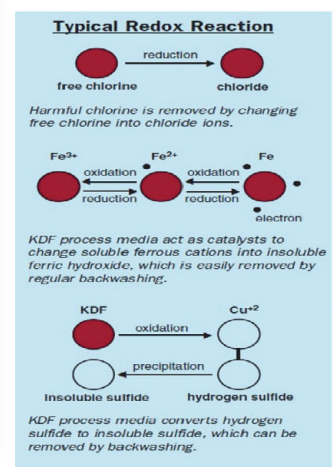
Removes or reduces iron and hydrogen sulfide from municipal or other water supplies. Also controls scale, bacteria and algae.



**KDF 55 Process**  
Medium Applications:  
Chlorine, Heavy Metal  
Removal and Bacteria



**KDF 85 Process**  
Medium Applications:  
Iron and Hydrogen  
Sulfide



### Engineering Guidelines for KDF Media

Maximum Service Flow (gpm)	Tank Size Diameter (inches)	Backwash Valve Required	Distributor	Minimum Backwash Rate (gpin)	Pipe Size Diameter (inches)	Bed Depth (inches)	KDF Process Media		
							Weight (lbs)	Volume (cu.ft.)	No. of Drums
3	6x35	3-cycle	Fine slotted	6	0.75	10	28.5	0.16	0.5
4	7x35			8	0.75	11	42.8	0.25	0.75
5.5	8x40			10	0.75	12	57.0	0.33	1.0
6	9x44			12	0.75	13	85.5	0.50	1.5
8	10x44			16	0.75	14	144.0	0.66	2.0
11	12x48			22	1	16	171.0	1.04	3.0
15	14x65			30	1	18	285.0	1.60	5.0
20	16x65			40	1.5	20	399.0	2.33	7.0
25	18x65			50	1.75	22	627.0	3.50	11.0
36	21x62			Diaphragm nest	Hub and lateral	72	2	24	855.0
45	24x72	90	2			25	1140.0	6.50	20.0
72	30x70	144	2.5			25	1767.0	10.25	31.0
100	36x70	200	2.5			25	2565.0	14.75	45.0
144	42x73	288	3			25	3420.0	20.00	60.0
188	48x78	376	4			25	4446.0	26.00	78.0
324	63x86	648	5			25	7695.0	45.00	135.0

Available by the pound or in 57 lb. drums. Each drum is .33 cubic feet.

**KDF 55 and KDF 85** Process Media can remove up to 99% of water-soluble lead, mercury, nickel, chromium, and other dissolved metals. All KDF Process Media forms are effective in controlling the buildup of bacteria, algae, fungi and scale, making them ideal for use in GAC beds, ion exchange resins, carbon block filters and inline carbon filters. Wherever our Media are used, they can eliminate the need for costly, and sometimes harmful, chemical treatments.

# Granular Activated Carbon (GAC)

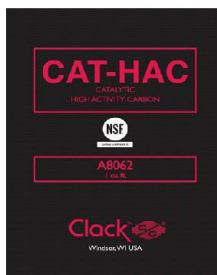
Granular activated carbon is used for the reduction of taste, odors, and dissolved organic chemicals from water supplies. Highly effective at reducing chlorine from chlorinated water supplies. A high surface area results in an exceptionally high capacity and efficiency. Catalytic, High Activity, and Enhanced carbons are especially effective at removing chloramines and Hydrogen Sulfide.



## C-SCN-1240-N

Our house brand GAC is a high quality "NSF LISTED" Acid Washed Coconut Shell Carbon in a 12X40 mesh. Our best seller due to its budget price and exceptional quality. Available in 1 Cu. Ft. bags. Our granular activated carbon rinses down quickly for faster start up and less call backs due to carbon fines.

C-SCN-1240-N	1 Cu. Ft. bag	28 pounds
--------------	---------------	-----------



## Clack CAT-HAC

Catalytic High Activity Carbon is a coconut shell based carbon specifically designed for the reduction of Chloramines and Hydrogen Sulfide from potable water. Its large micropore volume also makes it particularly well suited for the removal of low molecular weight organic compounds and their chlorinated byproducts such as chloroform and other trihalomethanes (THMs).

WS-A8062	1 Cu. Ft. bag	28 pounds
----------	---------------	-----------

# Gravel



Used to protect and enhance bottom distributors. Used in most systems as the base media. Available in 50 pound bags, or 1000 pound super sacks.

WS-GRAVEL	1/2 Cu. Ft bags	50 pounds
	Super Sack	1000 Pounds

# Other Medias

## Activated Alumina

Activated Alumina: Used for the removal of arsenic, fluoride, selenium, silica, and humic acid. When using for arsenic and fluoride removal, a low PH(5.5-6) is desired. It can be regenerated with sodium hydroxide. Our activated alumina is preregenerated with aluminum sulfate for maximum capacity.

WS-ACTIVATEDAL	1 Cu. Ft bags	43 pounds
----------------	---------------	-----------



## Calcite

Calcite is a naturally occurring calcium carbonate media. When properly applied, it corrects pH only enough to reach a non-corrosive equilibrium. A consumable media that needs periodic replenishment.

WS-CALCITE	.55 Cu. Ft bags	50 pounds
------------	-----------------	-----------



## Corosex

Corosex is a highly reactive Magnesium oxide media that can correct 5X more acidity than Calcite on a per weight basis. Under low flow conditions, Corosex can create a high pH condition. A consumable media that needs periodic replenishment.

WS-COROSEX	.66 Cu. Ft bags	50 pounds
------------	-----------------	-----------



## Slophos

Slow dissolving polyphosphate typically used for applications where scale needs to be minimized. Also used to sequester iron and hardness to prevent scaling and precipitation reactions in beverage and ice making equipment. They can also be used as anti-scalers for pre R/O or distillation. Somewhat effective in extending time between service on tank less water heaters.

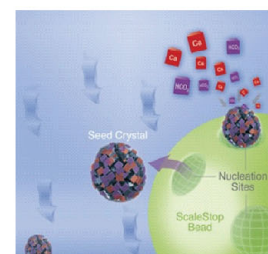
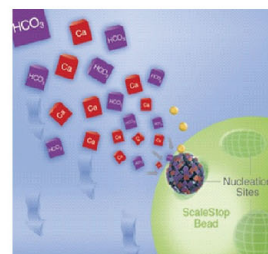
SLOPHOS	Drum	50 pounds
---------	------	-----------



## SP3

SP3 Anti-scaling media transform calcium and magnesium ions into "nano-crystals" lessening their ability to attach to plumbing or your appliances. These "nano-crystals" easily rinse away with water. Featured in our "SAFE" and "Eco-Safe" systems.

WS-CWGSP3	1 Liter bag	2 pounds
	60 Liter drum	112 pounds



### The Filtersorb SP3 De-salting Process

