

Residential 10" Filter Assemblies

A great choice for residential applications. Simple and reliable design based on the HKF series filters. These high quality residential under-the-counter systems are easy to maintain and use standard filter cartridges.

Residential applications, 1/4", 3/8", 1/2", and 3/4" sizes available.

Filter wrench included. -C systems include filters, install kit, and designer faucet.

Custom kit building is available including pre-installed filters, custom labeling, and custom installation kits.

4 stage units include a 1 GPM or 2 GPM stainless UV assembly.



WF-HK4-2U1/4-C

| Model # | Pipe Size | Stage 1 | Stage 2 | Stage 3 | Stage 4 |
|----------------|------------|-----------|----------|---------|----------|
| WF-HK1-1/4 | 1/4" FNPT | X | X | X | X |
| WF-HK1-1/4-C | 1/4" Quick | 91200/N | X | X | X |
| WF-HK2-1/4 | 1/4" FNPT | X | X | X | X |
| WF-HK2-1/4-C | 1/4" Quick | SF-1005.K | 91200/N | | X |
| WF-HK3-1/4 | 1/4" FNPT | X | X | X | X |
| WF-HK3-1/4-C | 1/4" Quick | SF-1005.K | UDF-10.K | 91200/N | X |
| WF-HK4-1U1/4 | 1/4" FNPT | X | X | X | UV 1 GPM |
| WF-HK4-1U1/4-C | 1/4" FNPT | SF-1005.K | UDF-10.K | 91200/N | UV 1 GPM |
| WF-HK4-2U1/4 | 1/4" FNPT | X | X | X | UV 2 GPM |
| WF-HK4-2U1/4-C | 1/4" FNPT | SF-1005.K | UDF-10.K | 91200/N | UV 2 GPM |
| WF-HK1-3/8 | 3/8" FNPT | X | X | X | X |

-C kits include filters, designer faucet, and installation kit

Counter Top Filters



CTF-200-STD



CTF-300-STD

Standard Features:

Fully assembled, easy installation

Long Reach Spout

Installation kit w/ adapters included

Filters installed

| Model # | Stage 1 | Stage 2 | Stage 3 | Color |
|-------------|-----------|----------|---------|-------|
| CTF-100-STD | 91200/N | X | X | White |
| CTF-100-CW | 91200/N | X | X | Clear |
| CTF-200-STD | SF-1005.K | 91200/N | X | White |
| CTF-200-CW | SF-1005.K | 91200/N | X | Clear |
| CTF-300-STD | SF-1005.K | UDF-10.K | 91200/N | White |
| CTF-300-CW | SF-1005.K | UDF-10.K | 91200/N | Clear |

ROPV 2½" Membrane Housings



OHSAS

WRAS

ROPV manufactures value and performance engineered pressure vessels. PureGen is proud to distribute ROPV membrane vessels for the North American market. We offer a wide range of sizes for all major industry systems and application requirements, including end port configurations for 2.5" membranes with operating pressures of 300, 600, and 1000 Psi. We stock thousands of membrane vessels and a complete inventory of repair parts.

ROPV's engineering group is composed of members of the FRP Design Institute with over 20 registered patents. Their commitment to quality and innovation has led to the successful development of membrane vessels for the commercial and industrial community. ROPV adheres to strict industry regulations to ensure safe manufacturing processes, enhanced technical competency and implementation of total quality management:

| 2.5" Housing Part # | Operating Pressure | Operating Temperature | Qualification Pressure | Element Length / Qty | Feed & Concentrate Port | Permeate Port |
|---------------------|--------------------|-----------------------|------------------------|----------------------|-------------------------|---------------|
| F2514-1414-300* | 300 PSI / 21 Bar | 14°F-150°F | 1800 PSI / 126 Bar | 14" / 1 | 1/4" FNPT | 1/4" FNPT |
| F2521-1421-300 | 300 PSI / 21 Bar | 14°F-150°F | 1800 PSI / 126 Bar | 21" / 1 | 1/4" FNPT | 1/4" FNPT |
| F2540-1414-300 | 300 PSI / 21 Bar | 14°F-150°F | 1800 PSI / 126 Bar | 40" / 1 | 1/4" FNPT | 1/4" FNPT |
| F2580-1414-300 | 300 PSI / 21 Bar | 14°F-150°F | 1800 PSI / 126 Bar | 40" / 2 | 1/4" FNPT | 1/4" FNPT |
| F25120-1414-300 | 300 PSI / 21 Bar | 14°F-150°F | 1800 PSI / 126 Bar | 40" / 3 | 1/4" FNPT | 1/4" FNPT |
| F2514-1414-600 | 600 PSI / 41 Bar | 14°F-150°F | 3600 PSI / 248 Bar | 14" / 1 | 1/4" FNPT | 1/4" FNPT |
| F2521-1414-600 | 600 PSI / 41 Bar | 14°F-150°F | 3600 PSI / 248 Bar | 21" / 1 | 1/4" FNPT | 1/4" FNPT |
| F2540-1414-600 | 600 PSI / 41 Bar | 14°F-150°F | 3600 PSI / 248 Bar | 40" / 1 | 1/4" FNPT | 1/4" FNPT |
| F2514-1414-1000C | 1000 PSI / 68 Bar | 14°F-150°F | 6000 PSI / 414 Bar | 14" / 1 | 1/4" FNPT | 1/4" FNPT |
| F2521-1414-1000C | 1000 PSI / 68 Bar | 14°F-150°F | 6000 PSI / 414 Bar | 21" / 1 | 1/4" FNPT | 1/4" FNPT |
| F2540-1414-1000C | 1000 PSI / 68 Bar | 14°F-150°F | 6000 PSI / 414 Bar | 40" / 1 | 1/4" FNPT | 1/4" FNPT |



300 PSI



1000 PSI

Replacement Parts for 2.5" Membrane Housings

| Part # | Description | PSI rating | Material | Qty. per Vessel |
|----------------|---|--------------|--------------------------|-----------------|
| RO-25KIT-300 | Complete end cap kit, includes o-rings and hardware | 300 | N/A | 2 |
| RO-25KIT-600 | Complete end cap kit, includes o-rings and hardware | 600 | N/A | 2 |
| RO-25KIT-1000C | Complete end cap kit, includes o-rings and hardware | 1000 | N/A | 2 |
| RO-19X265 | Small inner cap o-ring for membrane | 300/600/1000 | EPDM | 2 |
| RO-56X3.55 | Large outer o-ring on cap | 300/600/1000 | EPDM | 2 |
| RO-2009 | Locking Crescent | 300/600/1000 | 316 SS | 4 |
| RO-M6X20 | Locking Crescent Screw | 300/600/1000 | 316 SS | 4 |
| RO-2003 | Optional saddle mount | 300/600/1000 | Rubber | 4 |
| RO-M10X110 | Optional saddle screw | 300/600/1000 | 304 SS | 4 |
| RO-2004 | End Cap only | 300 | Engineered Thermoplastic | 2 |
| RO-20041 | End Cap only | 600/1000 | Super Duplex SS | 2 |

ROPV 4" Membrane Housings



OHSAS

WRAS



300 PSI



1000 PSI



300 PSI Side port

| 4" End Port Housing Part # | Operating Pressure | Operating Temperature | Qualification Pressure | Element Length / Qty | Feed & Concentrate Port | Permeate Port |
|----------------------------|--------------------|-----------------------|------------------------|----------------------|-------------------------|---------------|
| F4014-1212-300A | 300 PSI / 21 Bar | 14°F-150°F | 1800 PSI / 126 Bar | 14" / 1 | 1/2" FNPT | 1/2" FNPT |
| F4021-1212-300A | 300 PSI / 21 Bar | 14°F-150°F | 1800 PSI / 126 Bar | 21" / 1 | 1/2" FNPT | 1/2" FNPT |
| F4040-3412-300A | 300 PSI / 21 Bar | 14°F-150°F | 1800 PSI / 126 Bar | 40" / 1 | 3/4" FNPT | 1/2" FNPT |
| F4080-3412-300A | 300 PSI / 21 Bar | 14°F-150°F | 1800 PSI / 126 Bar | 40" / 2 | 3/4" FNPT | 1/2" FNPT |
| F40120-3412-300A | 300 PSI / 21 Bar | 14°F-150°F | 1800 PSI / 126 Bar | 40" / 3 | 3/4" FNPT | 1/2" FNPT |
| F40450-3412-300A | 450PSI / 31 Bar | 14°F-150°F | 2700 PSI / 186 Bar | 40" / 1 | 3/4" FNPT | 1/2" FNPT |
| F40600-3412-600A | 600 PSI / 41 Bar | 14°F-150°F | 3600 PSI / 246 Bar | 40" / 1 | 3/4" MNPT | 1/2" MNPT |
| F4014-12121000C | 1000 PSI / 68 Bar | 14°F-150°F | 6000 PSI / 414 Bar | 14" / 1 | 3/4" MNPT | 1/2" MNPT |
| F4021-12121000C | 1000 PSI / 68 Bar | 14°F-150°F | 6000 PSI / 414 Bar | 21" / 1 | 3/4" MNPT | 1/2" MNPT |
| F4040-34121000C | 1000 PSI / 68 Bar | 14°F-150°F | 6000 PSI / 414 Bar | 40" / 1 | 3/4" MNPT | 1/2" MNPT |
| F4040-34121200C | 1200 PSI / 83 | 14°F-150°F | 7200 PSI / 496 Bar | 40" / 1 | 3/4" MNPT | 1/2" MNPT |

Additional lengths including 61", 160", 200", and 240" are available by special order in all pressure ratings. Side port is available by special order, please contact PureGen for an ordering guide. Not all membrane housings listed are in stock.

Replacement Parts for 4" Membrane Housings

| Part # | Description | PSI rating | Material | Qty. per Vessel |
|----------------|---|-----------------------|----------|-----------------|
| RO-4KIT-300A | Complete end cap kit, includes o-rings and hardware 3/4" x 1/2" | 300 | N/A | 2 |
| RO-4KIT-300A1 | Complete end cap kit, includes o-rings and hardware 3/4" x 3/4" | 300 | N/A | 2 |
| RO-4KIT-300A2 | Complete end cap kit, includes o-rings and hardware 1/2" x 1/2" | 300 | N/A | 2 |
| RO-4KIT-300A3 | Complete end cap kit, includes o-rings and hardware 3/4" for sideport | 300 | N/A | 2 |
| RO-4KIT-300A-4 | Complete end cap kit, includes o-rings and hardware 1/3" for sideport | 300 | N/A | 2 |
| RO-4KIT-300B | Complete end cap kit, includes o-rings and hardware 3/4" x 1/2" B style | 300 | N/A | 2 |
| RO-4KIT-450A | Complete end cap kit, includes o-rings and hardware 3/4" x 1/2" | 450 | N/A | 2 |
| RO-4KIT-600A | Complete end cap kit, includes o-rings and hardware 3/4" x 1/2" | 600 | N/A | 2 |
| RO-4KIT-1000C | Complete end cap kit, includes o-rings and hardware 3/4" x 1/2" | 1000 | N/A | 2 |
| RO-4KIT-1200C | Complete end cap kit, includes o-rings and hardware 3/4" x 1/2" | 1200 | N/A | 2-4 |
| RO-19X265 | Small inner cap o-ring for membrane | 300/450/600/1000/1200 | EPDM | 2-4 |
| RO-90X5.3 | Large outer cap o-ring | 300/450/600/1000/1200 | EPDM | 2-4 |
| RO-25.8X3.55 | O-ring | 600/1000/1200 | EPDM | 2-4 |
| RO-25X2.68 | O-ring | 600/1000/1200 | EPDM | 2-4 |

All ROPV membrane housing parts are available, please contact PureGen for drawings and detailed parts lists.

Stainless Steel Membrane Housings



Features

Stainless Steel Construction
Stainless is not affected by UV rays or sunlight
Rated up to 300 PSI
Available in 2.5", 4", and 8"
End port and side port configurations available
Special order 316 SS available
Superior and attractive brushed finish
4" housings
not included saddles and straps

Specifications

| Part # | Membrane size and qty Size | Feed & Concentrate | Permeate |
|-----------------|----------------------------|--------------------|----------|
| MH-2514SS-1414 | 2.5" x 14" / 1 | 1/4" | 1/4" |
| MH-2514SS-3838 | 2.5" x 14" / 1 | 3/8" | 3/8" |
| MH-2521SS-1414 | 2.5" x 21" / 1 | 1/4" | 1/4" |
| MH-2521SS-3838 | 2.5" x 21" / 1 | 3/8" | 3/8" |
| MH-2540SS-3838 | 2.5" x 40" / 1 | 3/8" | 3/8" |
| MH-4014SS-1212 | 4" x 14" / 1 | 1/2" | 1/2" |
| MH-4021SS-1212 | 4" x 21" / 1 | 1/2" | 1/2" |
| MH-4040SS-1212 | 4" x 40" / 1 | 1/2" | 1/2" |
| MH-4040SS-1234 | 4" x 40" / 1 | 3/4" | 1/2" |
| MH-4080SS-1234 | 4" x 40" / 2 | 3/4" | 1/2" |
| MH-40120SS-1234 | 4" x 40" / 3 | 3/4" | 1/2" |

Side port, 316 and 316L, custom lengths, and many other options are available by special order. Please contact PureGen technical support for details. 8" Stainless housings are also available. 4.0" x 61" available by special order.



Cap



Small Oring



Large Oring



Saddle



Strap



Clamp

Stainless Membrane Housing Parts

| Part # | Description | Material | For Vessel Size | # Used Per Housing |
|----------------|--|-----------|-----------------|--------------------|
| MH-25-CAP-1414 | End cap 1/4" x 1/4" for 2-1/2" housing | ABS | 2-1/2" | 2 |
| MH-25-CAP-3838 | End cap 3/8" x 3/8" for 2-1/2" housing | ABS | 2-1/2" | 2 |
| MH-40-CAP-1212 | End cap 1/2" x 1/2" for 4" housing | ABS | 4" | 2 |
| MH-40-CAP-1234 | End cap 1/2" x 3/4" for 4" housing | ABS | 4" | 2 |
| O-RING-MH/CAP | Small membrane o-ring inside of cap (blue) | EPDM | 2-1/2" and 4" | 4 |
| O-RING-MH2540 | Large outer o-ring for cap | EPDM | 2-1/2" | 4 |
| O-RING-MH4040 | Large outer o-ring for cap | EPDM | 4" | 4 |
| MH-25SDA | Saddle pad | Rubber | 2-1/2" | 2 |
| MH-4SDA | Saddle pad | Rubber | 4" | 2 |
| MH-8SDA | Saddle pad | Rubber | 8" | 2 |
| MH-25STR | Housing strap | Stainless | 2-1/2" | 2 |
| MH-40STR | Housing strap | Stainless | 4" | 2 |
| MH-80STR | Housing strap | Stainless | 8" | 2 |
| MH-25S.C-CLM | Housing/Cap Clamp set of (2) | Stainless | 2-1/2" | 1 |
| MH-40SS.C-CLA | Housing/Cap Clamp set of (2) | Stainless | 4" | 1 |

Heavy Filter Assemblies

PureGen now offers a higher quality filtration assembly based on the HGF series filter housings for most commercial and residential applications. These fully assembled units include the highest quality componentry ensuring the most reliable filter system possible.

10" and 20" Heavy slim-line filter system design.

High flow filter assembly, commercial duty.

Ideal for residential, commercial, and industrial applications.

Heavy duty construction ensures years of trouble free service.

Installed pressure gauges available.

Filter wrench included.

Order filter cartridges separately to meet your specific needs.



| Model # | Pipe Size | Length | Stages |
|----------------|-----------|--------|--------|
| WF-HG110-3/8 | 3/8" FNPT | 10" | 1 |
| WF-HG210-3/8 | 3/8" FNPT | 10" | 2 |
| WF-HG310-3/8 | 3/8" FNPT | 10" | 3 |
| WF-HG310-3/8U2 | 3/8" FNPT | 10" | 4 |
| WF-HG120-3/8 | 3/8" FNPT | 20" | 1 |
| WF-HG220-3/8 | 3/8" FNPT | 20" | 2 |
| WF-HG320-3/8 | 3/8" FNPT | 20" | 3 |
| WF-HG320-3/8U2 | 3/8" FNPT | 20" | 4 |

Shown with optional pressure gauge

High Capacity Filter Assemblies

Our high capacity filter assembled with our heavy duty wall mount bracket.

10" and 20" High Capacity Water Filters Systems:

Large capacity

water filter housing for high flow applications

Ideal for residential, commercial, and industrial applications

Durable construction for long service life

Optional Pressure Release Button

Ideal for homes, farms, private wells, restaurants, swimming pools, spas, and trickle irrigation

Pressure gauges available

Order filter cartridges separately to meet your needs

Filter wrench included

Systems with pressure relief have a single pressure relief on the last filter housing



| Model No. | pipe size | Length | Stages | Pressure Relief |
|---------------|-----------|--------|--------|-----------------|
| WF-BB110-1 | 1" FNPT | 10" | 1 | N |
| WF-BB310-1 | 1" FNPT | 10" | 3 | N |
| WF-BB110-1-PR | 1" FNPT | 10" | 1 | Y |
| WF-BB310-1-PR | 1" FNPT | 10" | 3 | Y |
| WF-BB120-1 | 1" FNPT | 20" | 1 | N |
| WF-BB320-1 | 1" FNPT | 20" | 3 | N |
| WF-BB120-1-PR | 1" FNPT | 20" | 1 | Y |
| WF-BB320-1-PR | 1" FNPT | 20" | 3 | Y |

HM Digital Meters

Handheld and portable TDS, EC, pH and ORP testers, in-line monitors, controllers and accessories for reverse osmosis (RO) water filters, water purification systems, hydroponics, aquariums, pools and many other applications are superior in construction and performance, yet made

available at a very economical cost. HM Digital, Inc. is the only manufacturer of economical in-line dual TDS monitors that measure total dissolved solids (TDS) levels of feed and product water lines simultaneously, an effective way to compare rejection rates and gauge reverse osmosis membrane, water filter and water purification performance.



TDS-EZ



TDS-3



DM-1



| Part # | Description | Style | Range | Accuracy | Calibration Method | Battery |
|----------|---|-------------|-------------------------------|-------------|--------------------|------------|
| TDS-3 | TDS meter with temperature and ATC | Handheld | 0-9990 PPM | +/- 2% | screwdriver | (2) LR44 |
| AP-1* | TDS meter with ATC | Handheld | 0-5000 PPM | +/- 2% | pushbutton | (1) CR2032 |
| AP-2* | 0-9999 μ S, push button calibration, ATC, temperature | Handheld | 0-5000 μ S | +/- 2% | pushbutton | (1) CR2032 |
| COM-100* | Professional level μ S, mS, ppm, ppt meter | Handheld | Varies | +/- 2% | pushbutton | (3) LR44 |
| ORP-200* | Measures Oxidation Reduction Potential (Redox) and Temperature | Handheld | -999 to +1000 mV | (+/-2mV) | pushbutton | (3) LR44 |
| PH-200* | Measures pH and Temperature | Handheld | 1-14 pH | +/- 0.02 pH | pushbutton | (3) LR44 |
| DM-1* | Budget. Displays TDS of the feed and product water with dual probes | In-Line | 0-9990 PPM | +/- 2% | screwdriver | (2) LR44 |
| DM-2* | Commercial. Displays TDS of the feed and product water with dual probes | In-Line | 0-9990 PPM | +/- 2% | pushbutton | (2) AA |
| PS-100* | Monitors and controls TDS levels for high output commercial systems. | Panel | 0-999 PPM | +/- 2% | screwdriver | N/A |
| PS-200* | Monitors and controls TDS levels of two water lines | Panel | 0-999 PPM | +/- 2% | screwdriver | N/A |
| PS-202* | Simultaneously monitors and controls the TDS levels of two water lines | Panel | 0-999 PPM | +/- 2% | screwdriver | N/A |
| FM-2* | Five stage filter monitor tri color led faucet base indicator | Faucet Base | 0-999 days/ 0-9999 gallons | +/- 1% | N/A | (2) AA |

Many more monitors available, please contact PureGen technical support for more details.

*Special order, short lead time items



AP-1



PS-202



FM-2

Pressure Gauges

PureGen's high quality liquid filled pressure gauges are manufactured with a stainless steel casing, acrylic window, and a nickel plated bronze connection. Easy to read high contrast dial with psi/kg readings and a red high pressure warning zone make these pressure gauges perfect for OEM manufacturing. Customized gauge printing available for orders of 500 or more!



304 Stainless steel case
2.5" Diameter
Acrylic window
PSI/MPa Indicator
Accuracy +/- 5%
Bronze 1/4" NPT
Water or air applications
Stainless connections available
1.5" and 4" available

| Part# | Description | Connect Size |
|-----------|--------------------------------|--------------|
| PG-100-PC | 0-100 PSI, 2.5" PANEL CONNECT | 1/4" |
| PG-100-SC | 0-100 PSI, 2.5" BOTTOM CONNECT | 1/4" |
| PG-150-PC | 0-150 PSI, 2.5" PANEL CONNECT | 1/4" |
| PG-150-SC | 0-150 PSI, 2.5" BOTTOM CONNECT | 1/4" |
| PG-200-PC | 0-200 PSI, 2.5" PANEL CONNECT | 1/4" |
| PG-200-SC | 0-200 PSI, 2.5" BOTTOM CONNECT | 1/4" |
| PG-300-PC | 0-300 PSI, 2.5" PANEL CONNECT | 1/4" |
| PG-300-SC | 0-300 PSI, 2.5" BOTTOM CONNECT | 1/4" |

FLOW METERS

AQF Flow Meters

Technical parameters of AQF series Flow Meter

| Part # | Range in GPM | Range in LPM | Pipe Thread | Mounting |
|-------------|--------------|--------------|-------------|----------|
| AQF600-810 | 0.1-1 | N/A | 1/4" MNPT | Inline |
| AQF600-101* | 0.1-1 | N/A | 3/8 MNPT | Panel |
| AQF600-102 | .2-2 | 1-7 | 3/8" MNPT | Panel |
| AQF600-105 | .5-5 | 2-20 | 1/2" MNPT | Panel |
| AQF600-210 | 1-10 | 5-35 | 1" MNPT | Panel |
| AQF600-220 | 2-20 | 10-70 | 1" MNPT | Panel |
| AQF700-440 | 4-40 | 15-150 | 1-1/2" FNPT | Inline |
| AQF700-460 | 6-60 | 20-240 | 1-1/2" FNPT | Inline |



AQF600-810



AQF600-210, 220

AQF-ZT Series, Panel Mount

The ZT series flow meter includes a stainless adjustable flow control on the inlet.

Technical parameters of AQF-ZT series Flow Meter

| Part # | measur Range | | Pipe thread | Accuracy |
|--------------|--------------|--------------|-------------|----------|
| | GPM (Liquid) | LPM (Liquid) | | |
| AQF-ZT-055* | 0.5-5 | 2-18 | 1/2" NPT | ±4% |
| AQF-ZT-210* | 2-10 | 10-35 | 1" NPT | |
| AQF-ZT-620* | 6-20 | 20-70 | | |
| AQF-ZT-1040* | 10-40 | 30-150 | | |

Call for private label availability

*special order item

Materials of the AQF-ZT, AQF-G series Flow Meter

| Valve | Fitting | Float | O-ring | Body |
|----------|---------|-------|----------|---------|
| Material | ABS | SST | Silicone | Acrylic |



AQF-ZT-1040*

R-CAN Sterilight UV'S



S5Q-PA



Silver "BASIC" controller- lamp life remaining, total operating time, and universal power input.

Sterilume-Excoated UV lamps

304 axial flow stainless steel reactors

Covers a wide range of applications

Sterilight (R-CAN) UV Systems

| Part # | Description | Wt. (lbs) | Case QTY |
|-----------|--|-----------|----------|
| UV-S1Q-PA | Sterilight Stainless Steel UV 1GPM 1/4"MNPT, 100-240V/50-60HZ | 6 | 1 |
| UV-S2Q-PA | Sterilight Stainless Steel UV 2GPM 1/2"MNPT, 100-240V/50-60HZ | 6 | 1 |
| UV-S5Q-PA | Sterilight Stainless Steel UV 5GPM 3/4"MNPT, 100-240V/50-60HZ | 7 | 1 |
| UV-S8Q-PA | Sterilight Stainless Steel UV 8GPM 3/4"MNPT, 100-240V/50-60HZ | 10 | 1 |
| UV-VH410 | Sterilight Stainless Steel UV 18GPM 3/4"FNPT/ 1"MNPT, 100-240V/50-60HZ | 23 | 1 |

All systems have LED indicator.

Replacement Parts for Sterilight (R-Can) UV's

| Part # | DESCRIPTION | NO./CASE |
|-----------|--|----------|
| S287RL | Sterilight UV Lamp 1 GPM for S1Q-PA | 1 |
| S330RL | Sterilight UV Lamp 2 GPM for S2Q-PA | 1 |
| S463RL | Sterilight UV Lamp 5 GPM for All S5 Units | 1 |
| S810RL | Sterilight UV Lamp 8 GPM for All S8 Units | 1 |
| S36RL | Sterilight UV Lamp 12-100 GPM for All S12,S24&40 | 1 |
| QS-212 | Sterilight Quartz Sleeve 1/2 GPM for SQ-PA | 1 |
| QS-001 | Sterilight Quartz Sleeve 1 GPM for S1Q-PA | 1 |
| QS-330 | Sterilight Quartz Sleeve 2 GPM for S2Q-PA | 1 |
| QS-463 | Sterilight Quartz Sleeve 5 GPM for S5Q-PA | 1 |
| QS-810 | Sterilight Quartz Sleeve 8 GPM for S8Q-PA | 1 |
| QS-012 | Sterilight Quartz Sleeve 12-100 GPM for All S12,S24&40 | 1 |
| BA-ICE-S | Ballast for S1Q-PA to S12Q-PA | 1 |
| BA-F36122 | Ballast for S24Q | 1 |

Economy UV's

Specifications:

Voltage Available:

100 ~ 120V

220 ~ 240V

50/60Hz

Max. Working Pressure: 85-125 PSI

Chamber/Housing: No. 304 stainless steel

Lamp Failure Warning System: LED + alarm

Lamp Average Life: 5,000 - 9,000hrs

Features:

High quality quartz lamp and sleeve maintain high output of UV.

Quick and simple installation

Long service life saves you money.

Polished stainless steel reactor chambers for maximum UV reflection.

Visual LED display indicator

Audible alarm on units 2 GPM or larger

Easy lamp replacement and maintenance



UV-SS101

Economy Stainless Steel UV W/LED Indicator

| Part # | GPM | In/out | Max Psi | Ballast | Audible Alarm | Lamp Life |
|------------|-----|----------|---------|----------|---------------|-----------|
| UV-SS101 | 1 | 1/4" NPT | 85 | 6 Watts | N | 5000 hrs. |
| UV-SS201 | 2 | 1/4" NPT | 125 | 14 Watts | Y | 9000 hrs. |
| UV-SS401 | 4 | 1/2" NPT | 125 | 24 Watts | Y | 9000 hrs. |
| UV-SS601 | 6 | 1/2" NPT | 125 | 32 Watts | Y | 9000 hrs. |
| UV-SS1201* | 12 | 3/4" NPT | 125 | 39 Watts | Y | 9000 hrs. |

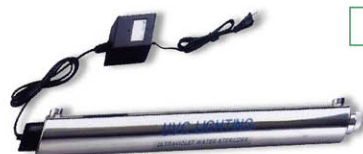
*Special order item



2 GPM



4 GPM



6 GPM



12 GPM



24 GPM

Replacement Parts for Economy UV's

| Part # | Description |
|-------------|--|
| UV-SS101-RL | UV lamp 1GPM (Also used for UV- P101S) |
| UV-SS201-RL | UV lamp 2GPM |
| UV-SS401-RL | UV lamp 4GPM |
| UV-SS601-RL | UV lamp 6GPM |
| UV-SS101-QS | Quartz Sleeve for 1GPM |
| UV-P101-QS | Quartz Sleeve for 1GPM |
| UV-SS201-QS | Quartz Sleeve for 2GPM |
| UV-SS401-QS | Quartz Sleeve for 4GPM |
| UV-SS601-QS | Quartz Sleeve for 6GPM |

Replacement Parts for Economy UV's

| Part # | Description |
|-----------|-----------------------------|
| BA-6-110 | 6W 110V Ballast, Flag plug |
| BA-14-110 | 14W 110V Ballast, Flag plug |
| BA-24-110 | 24W 110V Ballast, Flag plug |
| BA-32-110 | 32W 110V Ballast, Flag plug |

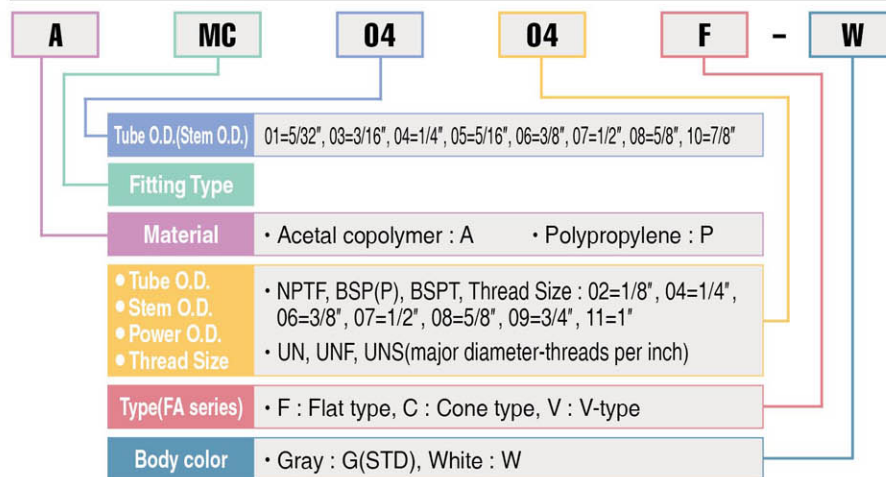
ACETAL FITTINGS (GRAY&WHITE / INCH)

Suitable for

- Water & foods use : **DMfit®** products are manufactured from safe, non-toxic materials meeting the requirements of FDA, WRAS, ANSI/NSF-51, 61, ACS, K-TW and DVGW-W270 Our products are widely used in water purification, food/beverage and pneumatic systems.
- Function & Quality : **DMfit®** provides quick and convenient assembly - saving time & expense. Our ISO9001, 14001 registered quality system ensures our customers a superior level of product quality. Defects are easily detectable and maintenance is easy with its easy dismantling for access.
- Collet Design : Our unique oval collet design is superior and more practical, and is an improvement welcomed by our world-wide customers in all industries.
- Applications : Beyond water and food use, fittings can be used with air, gases, vacuum, & liquids. And all connections can be assembled & disassembled repeatedly. A broad of sizes covers a broad scope of applications.
- Color : Gray Acetal Copolymer & white acetal copolymer.



Part Numbering System



Material Standards

NPTF Thread

| Material Options | Fittings Color | O-ring |
|-------------------|--------------------|------------|
| A - acetal | Gray, Black, White | NBR / EPDM |
| P - polypropylene | White | |
| B - brass | brass, or chromed | |

Fitting Working Pressure and Temperature

| SIZE Temperature | Small Size | | | | | | Large Size | | | | | |
|---------------------|----------------|------|-----|------|------|------|----------------|------|-------|-------|------|-------|
| | 5/32 | 3/16 | 1/4 | 5/16 | 3/8 | 1/2 | 5/8 | 7/8 | 1 1/8 | 1 1/2 | 2 | 2 1/2 |
| | 4mm | 5mm | 6mm | 8mm | 10mm | 12mm | 15mm | 18mm | 22mm | 28mm | 35mm | 42mm |
| 1°C (34°F) | 16bar (230PSI) | | | | | | 11bar (170PSI) | | | | | |
| 20°C (68°F) | 16bar (230PSI) | | | | | | 11bar (170PSI) | | | | | |
| 65°C (150°F) | 10bar (150PSI) | | | | | | 7bar (100PSI) | | | | | |

Outer Diameter Tolerance Limit of Tubing Used with Fittings

| | Size | Tolerance |
|------------|----------------|--------------------|
| Small Size | 5/32", 4mm | ± 0.004" (± 0.1mm) |
| | 3/16", 5mm | |
| | 1/4", 6mm | |
| | 5/16", 8mm | |
| | 3/8", 10mm | |
| Large Size | 1/2", 12mm | |
| | 5/8", 15(16)mm | |
| | 7/8", 18(22)mm | |
| | 28mm | |

※ For use at higher temperatures or pressures, please contact your DMfit representative for assistance.

Maximum Permissible Torque

| Thread | | | 1/8 1/4 | | 3/8 1/2 | | 3/4 |
|---------|----------------|------|---------|-----------|-----------|-----------|------|
| Torque | | | | | | | |
| Plastic | Maximum Torque | (Nm) | 1.5 | | 3.0 | | 4.0 |
| Steel | Maximum Torque | (Nm) | 7.0-9.0 | 12.0-14.0 | 22.0-24.0 | 28.0-30.0 | 40.0 |

※ The above values are average maximum applied torque. Actual results may vary.

CHEMICAL COMPATIBILITY TABLES

DMfir® has excellent resistance to exposure to organic compounds, industrial chemicals, and gases.
■ Resistance of chemical characteristics for plastic resins & elastomers.

| Description (% , °C) | Brass | SUS | Resin | | Rubber | |
|------------------------------|-------|-----|--------|----|--------|------|
| | | | Acetal | PP | NBR | EPDM |
| Caustic soda(10%, 20°C) | △ | △ | ◎ | ○ | ○ | ◎ |
| Gasoline | ○ | ○ | ◎ | △ | ◎ | × |
| Formic acid(25%, 20°C) | × | △ | × | ◎ | ○ | ◎ |
| Air | ◎ | ◎ | ◎ | ◎ | ◎ | ◎ |
| Mineral oil | ○ | ○ | ◎ | ○ | ◎ | × |
| Grease | ○ | ◎ | ◎ | △ | ◎ | |
| Sodium silicate | ○ | - | ◎ | ◎ | ◎ | ◎ |
| Glycerin | ○ | ◎ | ◎ | ◎ | ◎ | ◎ |
| Ozone | ○ | ○ | △ | △ | ○ | ◎ |
| Animal oil(Lard oil) | ○ | - | ◎ | ○ | ◎ | ○ |
| Kerosene | ◎ | ◎ | ◎ | ◎ | ◎ | × |
| Methane | ○ | - | ◎ | ◎ | ◎ | × |
| Methyl alcohol(Methanol) | ◎ | △ | ○ | ○ | ◎ | ◎ |
| Water(24°C) | ○ | ○ | ◎ | ◎ | ◎ | ◎ |
| Water(100°C) | × | ○ | △ | △ | - | - |
| Sea water | △ | ○ | ◎ | ◎ | - | - |
| Bunker oil | △ | - | - | ○ | ◎ | - |
| Benzene(Benzol) | × | △ | ○ | △ | × | × |
| Butane | ◎ | ◎ | ◎ | ◎ | ◎ | × |
| Fluorine | × | × | × | × | - | △ |
| Boric acid | ○ | ○ | ○ | ◎ | ◎ | ◎ |
| Carbon tetrachloride | △ | △ | ○ | △ | △ | × |
| Oxygen | ◎ | ◎ | ○ | ○ | ○ | ◎ |
| Petroleum | - | - | ○ | × | ◎ | × |
| Soda ash(Sodium carbonate) | ○ | △ | ◎ | ◎ | ◎ | ◎ |
| Calcium hydroxide | △ | △ | ◎ | ○ | ◎ | ◎ |
| Hydrogen | △ | ◎ | ◎ | ◎ | ◎ | ◎ |
| Mercury | × | - | - | ◎ | ◎ | ◎ |
| Steam(150°C) | ○ | - | △ | × | × | ◎ |
| Sodium cyanide | × | - | | | ◎ | ◎ |
| Vegetable oil | - | - | ○ | ○ | ◎ | ◎ |
| Silicone greases | - | - | ◎ | △ | ◎ | ◎ |
| Silicone oil | - | - | ◎ | △ | ◎ | ◎ |
| Acetone | ◎ | △ | ○ | △ | × | ◎ |
| Sulfurous acid gas | - | - | △ | ○ | ○ | ○ |
| Ammonia | △ | ◎ | ○ | ○ | ◎ | ◎ |
| Liquefied petroleum gas(LPG) | ◎ | ◎ | ◎ | ○ | ◎ | × |
| Ethyl alcohol(Ethanol) | ◎ | ○ | ◎ | ○ | ◎ | ◎ |

※ ◎ : Very acceptable ○ : Acceptable △ : Slightly Unacceptable × : Unacceptable - : No data

| Description (% , °C) | Brass | SUS | Resin | | Rubber | |
|------------------------------|-------|-----|--------|----|--------|------|
| | | | Acetal | PP | NBR | EPDM |
| Lye solution | - | - | ◎ | ○ | ○ | ◎ |
| Hydrochloric acid(10%, 20°C) | × | × | ○ | ◎ | - | - |
| Hydrochloric acid(20%, 20°C) | × | × | △ | ○ | - | - |
| Hydrochloric acid(20%, 80°C) | × | × | × | × | × | △ |
| Hydrochloric acid(38%, 20°C) | × | × | △ | ○ | ○ | ◎ |
| Ammonium chloride | × | △ | ○ | ◎ | ◎ | ◎ |
| Calcium chloride | ○ | △ | ◎ | ◎ | ◎ | ◎ |
| Naphtha | △ | ○ | ◎ | △ | △ | × |
| Olive oil | △ | ◎ | ○ | ◎ | ◎ | ○ |
| Sulfur | × | ○ | ◎ | ◎ | × | ◎ |
| Sodium phosphate | × | △ | ○ | ◎ | ◎ | ◎ |
| Ammonium phosphate | △ | △ | ○ | ◎ | ◎ | ◎ |
| Ammonium nitric | × | ○ | ○ | ◎ | ◎ | ◎ |
| Nitrogen | ○ | ◎ | ◎ | ◎ | ◎ | ◎ |
| Natural gas | ◎ | ◎ | ◎ | ○ | ◎ | × |
| Acetic acid(10%, 20°C) | - | - | - | - | - | - |
| Acetic acid(50%, 20°C) | - | - | - | - | - | - |
| Acetic acid(50%, 70°C) | - | - | - | - | - | - |
| Acetic acid(100%, 20°C) | - | - | - | - | - | - |
| Ketones | ○ | ○ | ○ | ◎ | - | ○ |
| Cresol | ○ | △ | △ | ○ | △ | × |
| Chromic acid(2%, 70°C) | × | × | × | △ | - | - |
| Chromic acid(10%, 70°C) | × | × | × | × | - | - |
| Chromic acid(25%, 70°C) | × | × | × | × | - | - |
| Chromic acid(2%, 50°C) | × | × | △ | △ | × | ○ |
| Soybean oil | △ | ○ | ◎ | ○ | ◎ | △ |
| Toluene | ◎ | ◎ | ○ | △ | × | × |
| Glucose | ◎ | ◎ | ◎ | ◎ | ◎ | ◎ |
| Propane | ◎ | ◎ | ◎ | ◎ | ◎ | × |
| Castor oil | ○ | ○ | ○ | ◎ | ◎ | ○ |
| Sulfuric acid(10%, 20°C) | × | × | ○ | ○ | × | ○ |
| Sulfuric acid(10%, 70°C) | × | × | × | △ | - | - |
| Sulfuric acid(30%, 20°C) | × | × | △ | ○ | - | - |
| Sulfuric acid(30%, 70°C) | × | × | × | △ | - | - |
| Sulfuric acid(98%, 20°C) | × | × | × | × | - | - |
| Aluminium sulfate | × | ○ | ○ | ◎ | ◎ | ◎ |
| Potassium sulfate | ○ | △ | ○ | ◎ | ◎ | ◎ |
| Hydrogen sulfide | △ | △ | ○ | ◎ | × | ◎ |

■ Resistance of chemical characteristics for Tube.

| Name of chemical | Polyethylene | Remarks |
|--------------------|--------------|-------------------|
| Air | ◎ | |
| Alcohol | ◎ | |
| Ammonia gas | ◎ | |
| Ammonia liquid | ○ | high temperature△ |
| Beer | ◎ | |
| Benzene | △ | |
| Bromine liquid | × | |
| Carbon dioxide gas | ○ | |
| Caustic soda | ○ | |
| Diesel fuel | △ | |
| Ethyl alcohol | ○ | high temperature△ |
| Fluor gas, dry | × | |
| Fuel Oil | △ | |

| Name of chemicals | Polyethylene | Remarks |
|---------------------------|--------------|---------|
| Hexane | △ | |
| Hydrogen gas | ◎ | |
| Lighting gas | △ | |
| Mercury | ◎ | |
| Methanol (Methyl Alcohol) | ◎ | |
| Milk | ◎ | |
| Molasses | ◎ | |
| Nickel salts | ◎ | |
| Oils, essential | △ | |
| Propane gas | △ | |
| Spindle Oil | △ | |
| Water, high-purity | ◎ | |

※ : Very acceptable, ○: Acceptable, △: Slightly unacceptable, ×: Very unacceptable

※ Differences in data can exist due to extended duration and elevated temperature (Standard data reflects use at ambient temperature.)

※ Consult our representative when using unsuitable liquids.

**MC - Male Connector** NPTF Thread

| PART NO. | Tube O.D. | NPTF Thread | Qty / Box |
|----------|-----------|-------------|-----------|
| AMC 0402 | 1/4 | 1/4 | 350 |
| AMC 0406 | 1/4 | 3/8 | 300 |
| AMC 0407 | 1/4 | 1/2 | 150 |
| AMC 0604 | 3/8 | 1/4 | 300 |
| AMC 0606 | 3/8 | 3/8 | 250 |
| AMC 0607 | 3/8 | 1/2 | 200 |
| AMC 0706 | 1/2 | 3/8 | 200 |
| AMC 0707 | 1/2 | 1/2 | 150 |

**ME - Male Elbow** NPTF Thread

| PART NO. | Tube O.D. | NPTF Thread | Qty / Box |
|----------|-----------|-------------|-----------|
| AME 0302 | 3/16 | 1/8 | 500 |
| AME 0402 | 1/4 | 1/8 | 500 |
| AME 0404 | 1/4 | 1/4 | 350 |
| AME 0406 | 1/4 | 3/8 | 300 |
| AME 0604 | 3/8 | 1/4 | 250 |
| AME 0606 | 3/8 | 3/8 | 250 |
| AME 0706 | 1/2 | 3/8 | 200 |
| AME 0707 | 1/2 | 1/2 | 150 |

**TEU - Tube Elbow Union**

| PART NO. | Tube O.D. | Stem O.D. | Qty / Box |
|-----------|-----------|-----------|-----------|
| ATEU 0404 | 1/4 | 1/4 | 500 |
| ATEU 0406 | 1/4 | 3/8 | 400 |
| ATEU 0606 | 3/8 | 3/8 | 250 |
| ATEU 0707 | 1/2 | 1/2 | 150 |

**EU - Elbow Union**

| PART NO. | Tube O.D. | Tube O.D. | Qty / Box |
|----------|-----------|-----------|-----------|
| AEU 0404 | 1/4 | 1/4 | 350 |
| AEU 0604 | 3/8 | 1/4 | 200 |
| AEU 0606 | 3/8 | 3/8 | 200 |
| AEU 0706 | 1/2 | 3/8 | 150 |
| AEU 0707 | 1/2 | 1/2 | 150 |

**FA - Female Adapter** NPTF Thread

| PART NO. | Tube O.D. | NPTF Thread | Qty / Box |
|----------|-----------|-------------|-----------|
| AFA 0404 | 1/4 | 1/4 | 400 |
| AFA 0604 | 3/8 | 1/4 | 300 |

**FAU - Female Adapter** UNS Thread (Cone Type)

| PART NO. | Tube O.D. | UNS Thread | Qty / Box |
|---------------|-----------|------------|-----------|
| AFAU 04 7/16C | 1/4 | 7/16 - 24 | 400 |
| AFAU 06 7/16C | 3/8 | 7/16 - 24 | 300 |

**FAB - Female Adapter** BSP(P) Thread (Cone Type)

| PART NO. | Tube O.D. | NPTF Thread | Qty / Box |
|------------|-----------|-------------|-----------|
| AFAB 0407C | 1/4 | 1/2 | 200 |
| AFAB 0607C | 3/8 | 1/2 | 200 |

※ Part number are listed as gray. For white, please add "w" at the end.

※ More sizing available. Please ask for a DMT catalog for more details.

ACETAL FITTINGS (GRAY&white / INCH)

※ Part number are listed as gray. For white, please add "w" at the end.



SA - Stem Adapter

NPTF Thread

| PART NO. | Stem O.D. | NPTF Thread | Qty / Box |
|----------|-----------|-------------|-----------|
| ASA 0404 | 1/4 | 1/4 | 500 |
| ASA 0604 | 3/8 | 1/4 | 300 |
| ASA 0606 | 3/8 | 3/8 | 300 |



TBC - Tube Barb Connector

| PART NO. | Stem O.D. | Tube I.D. | Qty / Box |
|-----------|-----------|-----------|-----------|
| ATBC 0404 | 1/4 | 1/4 | 1000 |
| ATBC 0604 | 3/8 | 1/4 | 500 |
| ATBC 0606 | 3/8 | 3/8 | 400 |



TEB - Tube Elbow Barb connector

| PART NO. | Stem O.D. | Tube I.D. | Qty / Box |
|-----------|-----------|-----------|-----------|
| ATEB 0404 | 1/4 | 1/4 | 800 |
| ATEB 0606 | 3/8 | 3/8 | 550 |



TU - Tee Union

| PART NO. | Tube O.D. (A) | Tube O.D. (B) | Tube O.D. (C) | Qty / Box |
|------------|---------------|---------------|---------------|-----------|
| ATU 040404 | 1/4 | 1/4 | 1/4 | 300 |
| ATU 060604 | 3/8 | 3/8 | 1/4 | 150 |
| ATU 060606 | 3/8 | 3/8 | 3/8 | 150 |
| ATU 070706 | 1/2 | 1/2 | 3/8 | 100 |
| ATU 070707 | 1/2 | 1/2 | 1/2 | 100 |



UC - Union Connector

| PART NO. | Tube O.D. | Tube O.D. | Qty / Box |
|----------|-----------|-----------|-----------|
| AUC 0404 | 1/4 | 1/4 | 350 |
| AUC 0604 | 3/8 | 1/4 | 250 |
| AUC 0605 | 3/8 | 5/16 | 250 |
| AUC 0606 | 3/8 | 3/8 | 250 |
| AUC 0706 | 1/2 | 3/8 | 200 |
| AUC 0707 | 1/2 | 1/2 | 150 |



BU - Bulkhead Union

| PART NO. | Tube O.D. | Tube O.D. | Thread Size | Qty / Box |
|-----------|-----------|-----------|-------------|-----------|
| ABU 0404 | 1/4 | 1/4 | M16XP1 | 250 |
| ABU 0606 | 3/8 | 3/8 | M20XP1.5 | 150 |
| ABU 0707W | 1/2 | 1/2 | M27XP1.5 | 70 |



TES - Tube End Stop

| PART NO. | Tube O.D. | Qty / Box |
|----------|-----------|-----------|
| ATES 04W | 1/4 | 700 |



TWD - Two Way Divider

| PART NO. | Tube in | Tube out | Qty / Box |
|-----------|---------|----------|-----------|
| ATWD 0404 | 1/4 | 1/4 | 300 |
| ATWD 0606 | 3/8 | 3/8 | 150 |
| ATWD 0707 | 1/2 | 1/2 | 100 |

ACETAL FITTINGS (WHITE / INCH)



FAB - Female Adapter BSP(P) Thread

| PART NO. | Tube O.D. | BSP(P) Thread | Qty / Box |
|-------------|-----------|---------------|-----------|
| AFAB 0409FW | 1/4 | 3/4 | 100 |



SVA - Stop Valve Adapter UNEF Thread

| PART NO. | Tube O.D. | UNEF Thread | Qty / Box |
|---------------|-----------|-------------|-----------|
| ASVA 04 9/16W | 1/4 | 9/16-24 | 200 |

● For an undercounter filter systems



CUC - Control valve Union Connector

| PART NO. | Tube O.D. | Tube O.D. | Qty / Box |
|-----------|-----------|-----------|-----------|
| ACUC 0404 | 1/4 | 1/4 | 250 |
| ACUC 0606 | 3/8 | 3/8 | 150 |

※ More sizing available. Please ask for a DMT catalog for more details.

FILTER STRAINERS



Inch Size (Standard-100Mesh)

| PART NO. | INLET | OUTLET | Qty / Box |
|-----------|-------|--------|-----------|
| ADMF 0404 | 1/4 | 1/4 | 50 |
| ADMF 0606 | 3/8 | 3/8 | 50 |
| ADMF 0707 | 1/2 | 1/2 | 40 |

ACCESSORIES



LC - Locking Clip

| PART NO. | Tube O.D. | Qty / Box |
|----------|-----------|-----------|
| ALC 04 | 1/4 | 50 |
| ALC 05 | 5/16 | 50 |
| ALC 06 | 3/8 | 40 |



TC - Tube Cutter (Nylon)

| PART NO. | Tube O.D. | Qty / Box |
|----------|-----------------------|-----------|
| TC | MAX. DIA 1/2" or 13mm | 50 |

DMfit® Tube Cutter with quality blade is suitable for cutting plastic tubing sizes up to 13mm.

STOP & FAUCET ADAPTOR VALVES

AV range of Stop & Faucet Valve Adaptor valves and Slip Tee Valves are manufactured in white Polypropylene, reinforced plastic with EPDM O-rings which provides value-added advantages in the installation of water supply line mainly.

AV range of Stop & Faucet Valve Adaptors and Slip Tee Valves are designed for use in drinking water systems, Refrigerators, IceMakers, Humidifiers and Water filtration applications, etc.,. Our valves offer greater efficiency than any traditional valves.

AV valves have been approved in NSF/ANSI 61 & 372.

AV range is 1/4" Turn valves.

Working Pressure and Temperature

| Pressure | 12bar | 6bar |
|-------------|-------------|--------------|
| Temperature | 20°C (70°F) | 65°C (150°F) |



STOP VALVE ADAPTOR Hand Tighten

| PART NO | TUBE OD | THREAD | Qty / Box |
|-----------|---------|-------------------------|-----------|
| AVA6753CP | 1/4" | 3/8" x 3/8" Compression | 70 |



STOP VALVE ADAPTOR Brass Shaft

| PART NO | TUBE OD | THREAD | Qty / Box |
|------------|---------|-------------------------|-----------|
| AVA6753BCP | 1/4" | 3/8" x 3/8" Compression | 70 |



FAUCET VALVE ADAPTOR Hand Tighten

| PART NO | TUBE OD | THREAD | Qty / Box |
|---------|---------|-----------------|-----------|
| AVA6754 | 1/4" | 1/2" x 1/2" NPS | 50 |

※ More sizing available. Please ask for a DMT catalog for more details.

VALVES (WHITE / INCH)



HMC - Hand valve Male Connector NPTF Thread

| PART NO. | Tube O.D. | NPTF Thread | Qty / Box |
|-----------|-----------|-------------|-----------|
| AHMC 0404 | 1/4 | 1/4 | 150 |



HUC - Hand valve Union Connector NPTF Thread

| Fitting Size | PART NO. | Tube O.D. | Tube O.D. | Qty / Box |
|--------------|-----------|-----------|-----------|-----------|
| Small Size | AHUC 0404 | 1/4 | 1/4 | 150 |
| | AHUC 0606 | 3/8 | 3/8 | 100 |
| | AHUC 0707 | 1/2 | 1/2 | 70 |



HFA - Hand valve Female Adapter

| Fitting Size | PART NO. | Tube O.D. | Tube O.D. | Qty / Box |
|--------------|-----------|-----------|-----------|-----------|
| Small Size | AHFA 0404 | 1/4 | 1/4 | 100 |
| | AHFA 0604 | 3/8 | 1/4 | 100 |

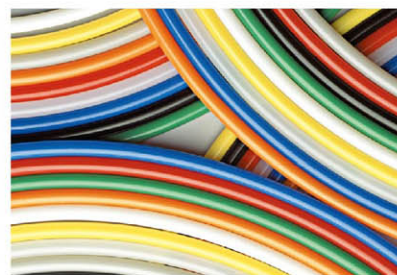
Check Valves



| PART NO. | Outlet Tube O.D. | Inlet Tube O.D. | Qty / Box |
|-----------|------------------|-----------------|-----------|
| ACHV 0404 | 1/4 | 1/4 | 300 |
| ACHV 0606 | 3/8 | 3/8 | 200 |
| ACHV 0707 | 1/2 | 1/2 | 150 |

※ More sizing available. Please ask for a DMT catalog for more details.

LLDPE TUBES



DMfit® tubing is produced from an advanced grade of LLDPE. Its greatest advantage is superior environmental stress cracking resistance (ESCR), greatly exceeding that of ordinary polyethylene tubing as measured by ASTM D-1693 (IGEPAL) tests. Environmental stresses that can shorten the service life of tubing include chemical exposure, aging connections with barb-type fittings, or high vibration loads with connections to compression fittings. Our tubing is compliant to ANSI/NSF-51, 61, WRAS and FDA requirements for food contact applications. Our tubing is available in multiple coding colors, and offers the user :

- Dimensional stability • Uniformity and long-term strength • Higher burst pressure • Greater tensile strength • Wide range of available colors.
- Suitable for use with **DMfit®** products and those of other manufacturers.

Working Pressure and Temperature

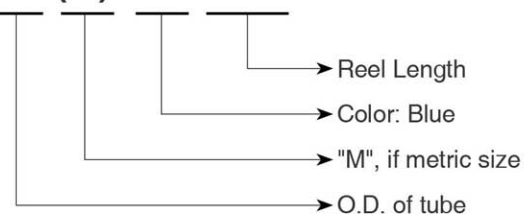
| Size | 5/32" | 3/16" | 1/4" | 5/16" | 3/8" | 1/2" |
|-----------------|----------------------------------|-------|------|---------|------|------|
| Parameter | 4mm | 5mm | 6mm | 8mm | 10mm | 12mm |
| Pressure | 230 psi | | | 170 psi | | |
| Tube Tolerances | -0.1mm / +0.1mm | | | | | |
| Temperature | Air-20°C(-4°F)-65°C(150°F)Liquid | | | | | |

※ Pressure values are based on PE tube used at room temperature.

※ Consult our representative when using at continuous elevated temperature and pressure.

Order Information

DPE 04 (M) - B - 0500



Colors Available

| Suffix | Color | LLDPE | | | | | | | | | | | | | PE-RT | |
|--------|---------|-------|-------|------|-------|------|------|-----|-----|-----|-----|------|------|------|-------|-------|
| | | 5/32" | 3/16" | 1/4" | 5/16" | 3/8" | 1/2" | 4mm | 5mm | 6mm | 8mm | 10mm | 12mm | 15mm | 1/4" | 5/16" |
| B | Blue | ○ | ○ | ○ | ○ | ○ | ○ | ○ | ○ | ○ | ○ | ○ | ○ | ○ | ○ | ○ |
| Y | Yellow | ○ | ○ | ○ | ○ | ○ | ○ | ○ | ○ | ○ | ○ | ○ | ○ | ○ | | |
| W | White | ○ | ○ | ○ | ○ | ○ | ○ | ○ | ○ | ○ | ○ | ○ | ○ | ○ | ○ | ○ |
| N | Natural | ○ | ○ | ○ | ○ | ○ | ○ | ○ | ○ | ○ | ○ | ○ | ○ | ○ | ○ | ○ |
| BK | Black | ○ | ○ | ○ | ○ | ○ | ○ | ○ | ○ | ○ | ○ | ○ | ○ | ○ | | |
| R | Red | ○ | ○ | ○ | ○ | ○ | ○ | ○ | ○ | ○ | ○ | ○ | ○ | ○ | | |
| GR | Gray | ○ | ○ | ○ | ○ | ○ | ○ | ○ | ○ | ○ | ○ | ○ | ○ | ○ | | |
| G | Green | ○ | ○ | ○ | ○ | ○ | ○ | ○ | ○ | ○ | ○ | ○ | ○ | ○ | | |

Inch Size

| | Part No. | Material | O.D.In. | I.D. In. | Wall | Reel Length (Meter) |
|---|-----------|----------|---------|----------|-------|---------------------|
| * | DPE 01 | LLDPE | 5/32" | 0.094 | 0.031 | 500 |
| * | DPE 03 | LLDPE | 3/16" | 0.125 | 0.031 | 400 |
| | DPE 04 | LLDPE | 1/4" | 0.17 | 0.04 | 300 |
| * | DPE-RT 04 | PE-RT | 1/4" | 0.17 | 0.04 | 300 |
| | DPE 05 | LLDPE | 5/16" | 0.216 | 0.048 | 200 |
| * | DPE-RT 05 | PE-RT | 5/16" | 0.216 | 0.048 | 200 |
| | DPE 06 | LLDPE | 3/8" | 1/4" | 0.062 | 150 |
| | DPE 07 | LLDPE | 1/2" | 3/8" | 0.062 | 100 |

* special order

WS Series 5600 Metered Water Softeners

Specification

Valve: Fleck 5600 Metered
Electrical: 24 Volt w/Transformer
Distributor: 1.05" O.D.
Connection: 3/4" or 1" Stainless Bypass
Media: 8% or 10% resin

Product Features

Simple mechanical design is easy to understand
Non-corrosive, UV-resistant Noryl Valve body
Easily serviced
The best selling control ever
Designed with double backwash
Space Saving Square or Larger Round Brine Tanks



Full Jacket Stainless

| Model number | App. capacity @ 6 lbs. per cu. ft. | App. capacity @ 15 lbs. per cu. ft. | Mineral tank size | Brine tank size | Recommended service flow | EST. Peak flow | Cu. Ft. resin |
|--------------|--|---|----------------------|--------------------|-----------------------------|-------------------|------------------|
| WS-1000MF | 20000 | 30000 | 9X48 | 18X30 | 1.3-8 GPM | 10 GPM | 1 |
| WS-1500MF | 30000 | 45000 | 10X54 | 18X30 | 1.6-10 GPM | 10 GPM | 1.5 |
| WS-2000MF | 40000 | 60000 | 12X52 | 18X30 | 2.3-12 GPM | 12 GPM | 2 |

Stainless Jacket w/Cap

| Model number | App. capacity @ 6 lbs. per cu. ft. | App. capacity @ 15 lbs. per cu. ft. | Mineral tank size | Brine tank size | Recommended service flow | EST. Peak flow | Cu. Ft. resin |
|--------------|--|---|----------------------|--------------------|-----------------------------|-------------------|------------------|
| WS-1000MH | 20000 | 30000 | 9X48 | 18X30 | 1.3-8 GPM | 10 GPM | 1 |
| WS-1500MH | 30000 | 45000 | 10X54 | 18X30 | 1.6-10 GPM | 10 GPM | 1.5 |
| WS-2000MH | 40000 | 60000 | 12X52 | 18X30 | 2.3-12 GPM | 12 GPM | 2 |

No Jacket

| Model number | App. capacity @ 6 lbs. per cu. ft. | App. capacity @ 15 lbs. per cu. ft. | Mineral tank size | Brine tank size | Recommended service flow | EST. Peak flow | Cu. Ft. resin |
|--------------|--|---|----------------------|--------------------|-----------------------------|-------------------|------------------|
| WS-1000MN | 20000 | 30000 | 9X48 | 18X30 | 1.3-8 GPM | 10 GPM | 1 |
| WS-1500MN | 30000 | 45000 | 10X54 | 18X30 | 1.6-10 GPM | 10 GPM | 1.5 |
| WS-2000MN | 40000 | 60000 | 12X52 | 18X30 | 2.3-12 GPM | 12 GPM | 2 |

RO Accessories

RO Systems

DMT Fittings

Water Softeners

MADE IN THE
USA
OF FOREIGN & DOMESTIC PARTS



Pentair
FLECK



5810 Control Valves

High Performance

FEATURES • BENEFITS

- Fiber-reinforced polymer valve body for superior strength and durability, non-corrosive, and UV-resistant
- continuous service flow rate of 36 GPM with a backwash of 28 GPM
- Backwash capability accommodates softener tanks and filters up to 2" in diameter
- Fully adjustable 3- or 5-cycle control for efficient and reliable water treatment system
- Time-tested, hydraulically-balanced piston for service and regeneration
- Optical sensor for precision cycle positioning
- soft water refill for a cleaner brine tank
- Designed with double backwash for reduced hardness leakage
- Diagnostics for historical valve performance
- Programming stored in memory and will not be lost due to power outages

Operating Specifications

VALVE SPECIFICATIONS

| | |
|----------------|---|
| Valve Material | Fiber-reinforced polymer |
| Inlet/Outlet | 3/4", 1", or 1-1/4" NPT, BSP, Sweat, CPVC |
| Cycles | 5 |

FLOW RATES (50 PSI INLET) – VALVE ALONE

| | Piston | Downflow | Upflow | Filter |
|---------------|------------|------------|-----------|-----------|
| Continuous | 36 GPM | 35 GPM | 31 GPM | 31 GPM |
| (15 psi drop) | 8.2 m3/hr | 7.9 m3/hr | 7.0 m3/hr | 7.0 m3/hr |
| Peak | 47 GPM | 45 GPM | 40 GPM | 40 GPM |
| (25 psi drop) | 10.6 m3/hr | 10.1 m3/hr | 9.0 m3/hr | 9.0 m3/hr |

| | | | |
|--------------------------------|---------------------|---------------------|---------------------|
| Cv (flow at 1 psi drop) | 9.4 | 8.9 | 8.0 |
| Max. Backwash (25 psi drop) | 28 GPM 6.3 m3/hr | 30 GPM 6.9 m3/hr | 33 GPM 7.5 m3/hr |

REGENERATION

| | |
|-------------------|----------------------|
| Downflow/Upflow | Both |
| Adjustable Cycles | Yes Timers Available |
| Time Available | |
| SXT: | 0 - 199 min/cycle |
| XTR2: | 0 - 240 min/cycle |

METER INFORMATION

| | |
|----------------------|---------------------------------------|
| Downflow/Upflow | |
| Meter Accuracy | |
| 1-1/4" Turbine: | 2 - 40 GPM ± 5% (0.45 - 9 m3/h) |
| Meter Capacity Range | |
| SXT: | 1 - 999,900 gal (0 - 3,785 m3) |
| XTR2: | 1 - 9,999,999 gal (0 - 378,541 m3) |

CONFIGURATIONS • OPTIONS

- Filter or softener control valves
- Downflow co-current or upflow counter-current regeneration
- Plumbing connections in 3/4" to 1-1/4" NPT, BSP, Sweat, and CPVC
- fiber-reinforced polymer high-flow bypass valve
- variable reserve for increased efficiency
- Programmable regeneration types for increased flexibility
- Please visit pentair.com/connectedsoftener for more information on Pentair Home and Pentair Pro Apps
- Three color bezel options of black, blue, and silver

TIMER OPTIONS

- XTR2 - Premium touch screen LCD display with two programmable relay outputs for both normally opened and normally closed contacts
- SXT - Large LCD display with one programmable relay output for both normally open and normally closed contacts

DIMENSIONS

| | |
|-------------------|---|
| Distributor Pilot | 1.05" O.D. (26.7 mm) 32 mm O.D. 1.315" O.D. (33.4 mm) |
| Drain Line | 3/4" or 1" NPT Quick Connect |
| Brine Valve | |
| 1600: | 3/8" or 1/2" |
| Injector System | 1610 |
| Mounting Base | 2.5" - 8 NPSM |
| Height from | |
| Top of Tank | 11.3" (287 mm) |
| 11.3" (287 mm) | 1/4" Below top of tank |

TYPICAL APPLICATIONS

| | |
|----------------|--|
| Water Softener | 8 - 21" Diameter (limited by maximum injector size) |
| Filter | 8" - 16" diameter (based on 10 GPM per sq. ft.) |
| Filters | 8 - 21" Diameter based on 10 GPM/ft2 |

ADDITIONAL INFORMATION

| | |
|---------------------------|---------------------------------|
| Electrical Rating | 12 Volts DC |
| Estimated Shipping Weight | 11 lbs (4.99 kg) Pressure |
| Pressure | 300 psi |
| Hydrostatic: | (20 bar) |
| Working: | 20 - 125 psi (1.4 - 8.5 bar) |
| Temperature | |
| Cold Water Valve: | 34 - 110°F (1 - 43°C) |



TESTED and CERTIFIED by the WQA to NSF/ANSI Standard 44 for Water Softener Performance.



UL recognized to the 979



TESTED and CERTIFIED by the WQA to NSF/ANSI Standard 372 for Lead Free Compliance.



TESTED EMC and Low Voltage Directive



Restriction of Hazardous Substance Compliant

5810SXT Metered Softeners

Specifications:

- Includes Hi-Flow plastic bypass and 1" plumbing connectors
- WQA Gold Seal Certified 8% crosslink resin, 10% available.
- 12 Volt DC drive w/ transformer
- High Flow heavy duty bottom screen, 32mm pipe
- Fully programmed
- Optional plumbing connectors available, 1" - 1.5" threaded and sweat



FULL JACKET STAINLESS

| MODEL NUMBER | App. Capacity @ 6 lbs per sg. Ft. | App. Capacity @ 15 lbs per sg. Ft. | Mineral Tank Sizes | Brine tank Size | Cu. Ft. resin | Recommended Service Flow GPM |
|-----------------|-----------------------------------|------------------------------------|--------------------|-----------------|---------------|------------------------------|
| WS-1000MF-5810S | 20000 | 30000 | 9x48 | 18x30 | 1 | 1.3-8 |
| WS-1500MF-5810S | 30000 | 45000 | 10x54 | 18x30 | 1.5 | 1.6-10 |
| WS-2000MF-5810S | 40000 | 60000 | 12x52 | 18x30 | 2 | 2.3-15 |

STAINLESS JACKET W/CAP

| MODEL NUMBER | App. Capacity @ 6 lbs per sg. Ft. | App. Capacity @ 15 lbs per sg. Ft. | Mineral Tank Sizes | Brine tank Size | Cu. Ft. resin | Recommended Service Flow GPM |
|-----------------|-----------------------------------|------------------------------------|--------------------|-----------------|---------------|------------------------------|
| WS-1000MH-5810S | 20000 | 30000 | 9x48 | 18x30 | 1 | 1.3-8 |
| WS-1500MH-5810S | 30000 | 45000 | 10x54 | 18x30 | 1.5 | 1.6-10 |
| WS-2000MH-5810S | 40000 | 60000 | 12x52 | 18x30 | 2 | 2.3-15 |

NO JACKET

| MODEL NUMBER | App. Capacity @ 6 lbs per sg. Ft. | App. Capacity @ 15 lbs per sg. Ft. | Mineral Tank Sizes | Brine tank Size | Cu. Ft. resin | Recommended Service Flow GPM |
|-----------------|-----------------------------------|------------------------------------|--------------------|-----------------|---------------|------------------------------|
| WS-1000MN-5810S | 20000 | 30000 | 9x48 | 18x30 | 1 | 1.3-8 |
| WS-1500MN-5810S | 30000 | 45000 | 10x54 | 18x30 | 1.5 | 1.6-10 |
| WS-2000MN-5810S | 40000 | 60000 | 12x52 | 18x30 | 2 | 2.3-15 |

RO Accessories

RO Systems

DMT Fittings

Water Softeners

RESIDENTIAL CONTROL VALVES



Fleck® 5800 Control Valves High Performance



Features

- Excellent service rates (21 GPM or 4.8 m³/h continuous, 27 GPM or 6.1 m³/h peak) and backwash flow rate (17 GPM or 3.9 m³/h @ 25psi ΔP)
- Fast positioning reversible 10,000 RPM 12 volt DC drive motor
- Seal and spacer cartridge for easy servicing
- LCD - Backlit display that helps during low light conditions
- Precision cycle positioning using optical sensor
- Soft water refill for better brine saturation and cleaner brine tank
- Three styles of electronic timers to choose from: LXT, SXT and XTR
- Programming is stored in memory and will not be lost due to power outages
- Time of day backup for up to 12 hours of power loss

Options

- Upflow or countercurrent regeneration
- Downflow or co-current regeneration
- Backwashing filter
- Fiber-reinforced polymer or stainless steel bypass valve
- Metered- or Time Clock-initiated regeneration
- Plumbing yoke connections in 3/4" to 1-1/4" NPT, BSP and Sweat
- LXT Timer- Easiest to program, only 2 - 4 parameters to program based on filter or softener
- Midsize, blue backlit LCD display
- Preprogrammed for Time Clock or Meter valve
- SXT Timer- Increased flexibility, set cycle steps
- Large, blue backlit LCD display
- Ability to change programming: Time Clock or Meter and filter or softener
- XTR Timer- Optimal flexibility, program parameters with ease
- Touch screen display
- Programmable auxiliary relay output with normally open and normally closed contacts

Operating Specifications

VALVE SPECIFICATIONS

| | |
|----------------|--------------------------|
| Valve Material | Fiber-reinforced polymer |
| Inlet/Outlet | 3/4" to 1-1/4" |
| Cycles | 5 |

FLOW RATES (50 PSI, 3.4 BAR INLET) - VALVE ALONE

| | | |
|-----------------------------|--------|----------|
| Continuous (15 psi drop) | 21 GPM | 4,8 m³/h |
| Peak (25 psi drop) | 27 GPM | 6,1 m³/h |
| Cv (flow at 1 psi drop) | 5.4 | |
| Max. Backwash (25 psi drop) | 17 GPM | 3,9 m³/h |

REGENERATION

| | |
|-------------------|---|
| Downflow/Upflow | Both |
| Adjustable Cycles | Yes – SXT and XTR |
| Time Available | LXT: Minutes calculated SXT: 0 - 199 minutes per cycle XTR: 0 - 240 minutes per cycle |

METER INFORMATION

| | |
|-----------------------------|---|
| Meter Accuracy | .25 - 15 GPM +/- 5% |
| Meter Capacity Range (gal.) | LXT: Volume calculated SXT: 1 - 999,900 XTR2: 1 - 9,900,000 |

DIMENSIONS

| | |
|-------------------------|--------------------|
| Distributor Pilot | 1.05" O.D., 26,7mm |
| Drain Line | 1/2" O.D. |
| Injector Brine System | 1600 |
| Brine Line | 3/8" |
| Mounting Base | 2.5" - 8 NPSM |
| Height from Top of Tank | 9", 228mm |

TYPICAL APPLICATIONS

| | |
|----------------|---|
| Water Softener | 6" - 16" diameter (limited by maximum injector size) |
| Filter | 8" - 16" diameter (based on 10 GPM per sq. ft.) |

ADDITIONAL INFORMATION

| | |
|---------------------------|--|
| Electrical Rating | 12 Volts DC |
| Estimated Shipping Weight | Time Clock: 7 lbs. Metered Valve: 10 lbs. |
| Pressure | Hydrostatic: 300 psi, 20 bar Working: 20 - 125 psi, 1,4 - 8,5 bar |
| Temperature | 34°-110°F, 1°-43°C |

5800LXT Metered Softeners

Specifications:

Includes Hi-Flow plastic bypass and 1" plumbing connectors
 WQA Gold Seal Certified 8% crosslink resin, 10% available.
 12 Volt DC drive w/ transformer
 High Flow heavy duty bottom screen, 1.05"
 Fully programmed
 Optional plumbing connectors available,
 3/4" - 1" threaded and sweat



FULL JACKET STAINLESS

| MODEL NUMBER | App. Capacity @ 6 pounds per cu. Ft. | App. Capacity @15 pounds per cu. Ft. | Mineral Tank Sizes | Brine tank Size | Recommended Service Flow GPM | Est. Peak Flow | Cu. Ft. resin |
|-----------------|--------------------------------------|--------------------------------------|--------------------|-----------------|------------------------------|----------------|---------------|
| WS-1000MF-58LXT | 20000 | 30000 | 9x48 | 18x30 | 1.3-8 | 12 | 1 |
| WS-1500MF-58LXT | 30000 | 45000 | 10x54 | 18x30 | 1.6-10 | 14 | 1.5 |
| WS-2000MF-58LXT | 40000 | 60000 | 12x52 | 18x30 | 2.3-15 | 16 | 2 |

STAINLESS JACKET W/CAP

| MODEL NUMBER | App. Capacity @ 6 pounds per cu. Ft. | App. Capacity @15 pounds per cu. Ft. | Mineral Tank Sizes | Brine tank Size | Recommended Service Flow GPM | Est. Peak Flow | Cu. Ft. resin |
|-----------------|--------------------------------------|--------------------------------------|--------------------|-----------------|------------------------------|----------------|---------------|
| WS-1000MH-58LXT | 20000 | 30000 | 9x48 | 18x30 | 1.3-8 | 12 | 1 |
| WS-1500MH-58LXT | 30000 | 45000 | 10x54 | 18x30 | 1.6-10 | 14 | 1.5 |
| WS-2000MH-58LXT | 40000 | 60000 | 12x52 | 18x30 | 2.3-15 | 16 | 2 |

NO JACKET

| MODEL NUMBER | App. Capacity @ 6 pounds per cu. Ft. | App. Capacity @15 pounds per cu. Ft. | Mineral Tank Sizes | Brine tank Size | Recommended Service Flow GPM | Est. Peak Flow | Cu. Ft. resin |
|-----------------|--------------------------------------|--------------------------------------|--------------------|-----------------|------------------------------|----------------|---------------|
| WS-1000MN-58LXT | 20000 | 30000 | 9x48 | 18x30 | 1.3-8 | 12 | 1 |
| WS-1500MN-58LXT | 30000 | 45000 | 10x54 | 18x30 | 1.6-10 | 14 | 1.5 |
| WS-2000MN-58LXT | 40000 | 60000 | 12x52 | 18x30 | 2.3-15 | 16 | 2 |
| WS-2500MN-58LXT | 50000 | 75000 | 13x54 | 18x40, 21x35 | 2.8-18 | 18 | 2.5 |

PureGen can custom build your softeners including specialty medias, private label boxing and more.
 Tank Jackets available for all systems.

RO Accessories

RO Systems

DMT Fittings

Water Softeners

WS Series 5600SXT Metered Water Softeners

Specification

Valve: Fleck 5600SXT Metered

Electrical: 24 Volt w/Transformer

Distributor: 1.05" O.D.

Connection: 3/4" or 1" stainless bypass

Media: 8% or 10% resin

Space Saving Square or Larger Round Brine Tanks



Full Jacket Stainless

| Model number | App. capacity @ 6 lbs. per cu. ft. | App. capacity @ 15 lbs. per cu. ft. | Mineral tank size | Brine tank size | Recommended service flow | EST. Peak flow | Cu. Ft. resin |
|-----------------|--|---|----------------------|--------------------|-----------------------------|-------------------|------------------|
| WS-1000MF-56SXT | 20000 | 30000 | 9X48 | 18X30 | 1.3-8 GPM | 10 GPM | 1 |
| WS-1500MF-56SXT | 30000 | 45000 | 10X54 | 18X30 | 1.6-10 GPM | 10 GPM | 1.5 |
| WS-2000MF-56SXT | 40000 | 60000 | 12X52 | 18X30 | 2.3-12 GPM | 12 GPM | 2 |

Stainless Jacket w/Cap

| Model number | App. capacity @ 6 lbs. per cu. ft. | App. capacity @ 15 lbs. per cu. ft. | Mineral tank size | Brine tank size | Recommended service flow | EST. Peak flow | Cu. Ft. resin |
|-----------------|--|---|----------------------|--------------------|-----------------------------|-------------------|------------------|
| WS-1000MH-56SXT | 20000 | 30000 | 9X48 | 18X30 | 1.3-8 GPM | 10 GPM | 1 |
| WS-1500MH-56SXT | 30000 | 45000 | 10X54 | 18X30 | 1.6-10 GPM | 10 GPM | 1.5 |
| WS-2000MH-56SXT | 40000 | 60000 | 12X52 | 18X30 | 2.3-12 GPM | 12 GPM | 2 |

No Jacket

| Model number | App. capacity @ 6 lbs. per cu. ft. | App. capacity @ 15 lbs. per cu. ft. | Mineral tank size | Brine tank size | Recommended service flow | EST. Peak flow | Cu. Ft. resin |
|-----------------|--|---|----------------------|--------------------|-----------------------------|-------------------|------------------|
| WS-1000MN-56SXT | 20000 | 30000 | 9X48 | 18X30 | 1.3-8 GPM | 10 GPM | 1 |
| WS-1500MN-56SXT | 30000 | 45000 | 10X54 | 18X30 | 1.6-10 GPM | 10 GPM | 1.5 |
| WS-2000MN-56SXT | 40000 | 60000 | 12X52 | 18X30 | 2.3-12 GPM | 12 GPM | 2 |

"SAFE" Anti-Scale Water Conditioners

The "SAFE" system from PureGen prevents the negative effects of calcium and magnesium scaling, while retaining the positive, healthful benefits. The anti-scale media prevents "hard" scale, the damaging scale that sticks to pipes, valves and appliances. It does this by converting dissolved hardness minerals into harmless, "soft" scale crystals. "Soft" scale crystals (Nano Crystals) stay suspended and are less likely to stick to plumbing imperfections. "Soft" scale crystals can be wiped away without the use of dangerous chemicals. No wasted water, salt, or electricity.



Salt Free
Anti-Scale
Five Year Media Life
Environmentally Friendly

SAFE w/ Clack 1400 In/Out, bypass, and 1" plumbing connectors.

| Model # | Hardness | Tank Size | Flow Rate Max. |
|--------------|------------|-----------|----------------|
| SAFE-4000-12 | 0-25 GPG | 9X48 | 12 GPM |
| SAFE-5000-12 | 26-45 GPG | 9X48 | 12 GPM |
| SAFE-6000-12 | 46-100 GPG | 9X48 | 12 GPM |
| SAFE-4500-15 | 0-25 GPG | 10X54 | 15 GPM |
| SAFE-5500-15 | 26-45 GPG | 10X54 | 15 GPM |
| SAFE-6750-15 | 46-100 GPG | 10X54 | 15 GPM |
| SAFE-6500-20 | 0-25 GPG | 12X52 | 20 GPM |
| SAFE-7500-20 | 26-45 GPG | 12X52 | 20 GPM |
| SAFE-9750-20 | 46-100 GPG | 12X52 | 20 GPM |

SAFE w/ commercial 1-1/2" In/Out head

| Model # | Hardness | Tank Size | Flow Rate Max. |
|----------------|------------|-----------|----------------|
| SAFE-6500-20-1 | 0-25 GPG | 12X52 | 20 GPM |
| SAFE-7500-20-1 | 26-45 GPG | 12X52 | 20 GPM |
| SAFE-9750-20-1 | 46-100 GPG | 12X52 | 20 GPM |



shown w/ optional tank jacket

All Anti-Scale media systems should be pre-treated to remove chlorine, chloramine, iron, manganese, copper, and other water impurities that may foul or damage the media. Please contact PureGen technical support for details.

Hydromagnetic 500



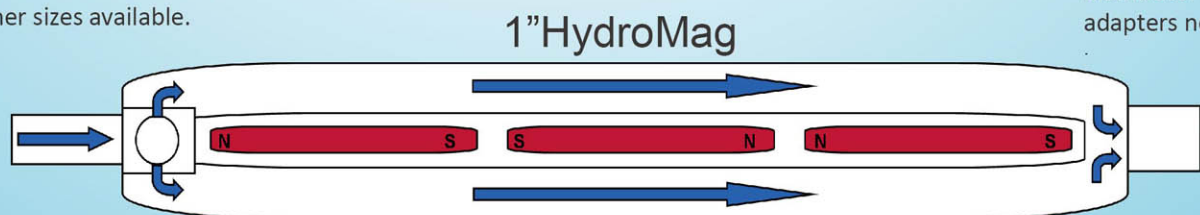
WS-MAG500

1.05" module

The Hydromagnetic 500 water conditioning module was designed to deliver the highest magnetic pulling force at a reasonable price. We use only Rare Earth Neodymium Magnets with a combined magnetic pulling force of over 300 pounds in each module. As the water enters the conditioning chamber it is redirected 90 degrees to cause a slight pressure drop which enhances the effects of the magnetic conditioning. The water then flows around the magnetic module and is subjected to a series of reversing-polarity permanent magnetic fields. All components that contact the water during this process are manufactured with NSF listed components. Magnetic conditioning has a long and successful history of treating water in both residential and industrial applications including cooling towers, closed loop chilled water systems, heating hot water systems and boiler treatment. No chemicals or salt to add, no polluting chemicals to drain, and no electricity to operate makes this technology truly green. Manufactured in the USA to ensure quality and consistency.

1.05" standard, use with most standard bottom screens. Other sizes available.

1.05" connector, simply insert your distributor tube, no adapters needed.



The inlet water makes a 90 degree turn causing a very slight pressure drop starting the conditioning process

Reversing-polarity permanent magnetic fields with over 300 pounds of pulling force!

Conditioned water exits the system. Our high flow design flows over 20GPM. The water only touches NSF listed components for your customers safety

Tanks Filled With Media

Makes field service easy and quick. No more messy media change-outs in the field. Simply change the whole tank. Units include the tank, media, gravel underbed, manifold, boxed and includes a specialized shipping cap designed to keep the manifold in place without getting media inside of it. Available in many popular configurations!



TANK SEAL

Softner Resin, No Jacket

| | | |
|----------|-------------|-------|
| WS-1000N | 1 Cu. Ft. | 9x48 |
| WS-1500N | 1.5 Cu. Ft. | 10x54 |
| WS-2000N | 2 Cu. Ft. | 12x52 |

Softner Resin, Jacket w/ Plastic Cap

| | | |
|----------|-------------|-------|
| WS-1000H | 1 Cu. Ft. | 9x48 |
| WS-1500H | 1.5 Cu. Ft. | 10x54 |
| WS-2000H | 2 Cu. Ft. | 12x52 |

Softner Resin, Fully Welded S.S. Jacket

| | | |
|----------|-------------|-------|
| WS-1000F | 1 Cu. Ft. | 9x48 |
| WS-1500F | 1.5 Cu. Ft. | 10x54 |
| WS-2000F | 2 Cu. Ft. | 12x52 |

GAC, Coconut Shell, No Jacket

| | | |
|----------|-------------|-------|
| CF-1000N | 1 Cu. Ft. | 9x48 |
| CF-1500N | 1.5 Cu. Ft. | 10x54 |
| CF-2000N | 2 Cu. Ft. | 12x52 |

GAC, Coconut Shell, Jacket w/ Plastic Cap

| | | |
|----------|-------------|-------|
| CF-1000H | 1 Cu. Ft. | 9x48 |
| CF-1500H | 1.5 Cu. Ft. | 10x54 |
| CF-2000H | 2 Cu. Ft. | 12x52 |

GAC, Coconut Shell, Fully Welded S.S. Jacket

| | | |
|----------|-------------|-------|
| CF-1000F | 1 Cu. Ft. | 9x48 |
| CF-1500F | 1.5 Cu. Ft. | 10x54 |
| CF-2000F | 2 Cu. Ft. | 12x52 |

| PART NO. | Description |
|----------|--------------------|
| WS-C25-S | 2.5" TANK CAP SEAL |

RO Accessories

RO Systems

DMT Fittings

Water Softeners

In/Out Heads



| Part # | Description | Tank Thread | Pipe Size In/Out | Riser | Bypass |
|----------|----------------------|--------------|------------------|-------|----------|
| WS-D1400 | High Flow Clack 1400 | 2-1/2"-8NPSM | see Clack parts | 1.05" | Optional |

Mineral Tank Accessories

Bottom Screens, stack distributors, hub and laterals, and other mineral tank components are one of the most important parts of your system. PureGen offers many different sizes and styles to meet your needs.



WS-40922
WS-40924



WS-18280

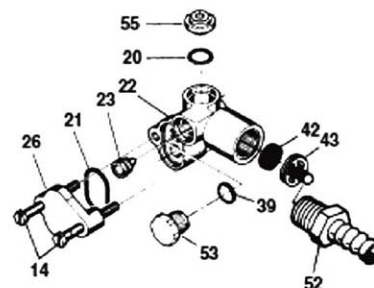
Top & Bottom Screens and Pipe for Top Mount Valves

| Part# | Pipe Size | Description |
|-----------------|------------------|--|
| WS-40922 | 1.05" (3/4" NPT) | Best quality, fine mesh, high flow, used on all 1.05" PureGen units, bottom screen |
| WS-18280 | 1.05" (3/4" NPT) | Fleck specific cam lock top screen |
| PIPE-O1 | 1.05" | 54" length, our special Grey PVC pipe, durable and attractive |
| WS-1.05MANIFOLD | 1.05" (3/4" NPT) | WS-40922 and PIPE-O1, for 2.5 Cu. Ft. systems and smaller |
| WS-32MANIFOLD | 32 mm | WS-40924 and WS-40677-54, for 2.5 Cu. Ft. systems and smaller |

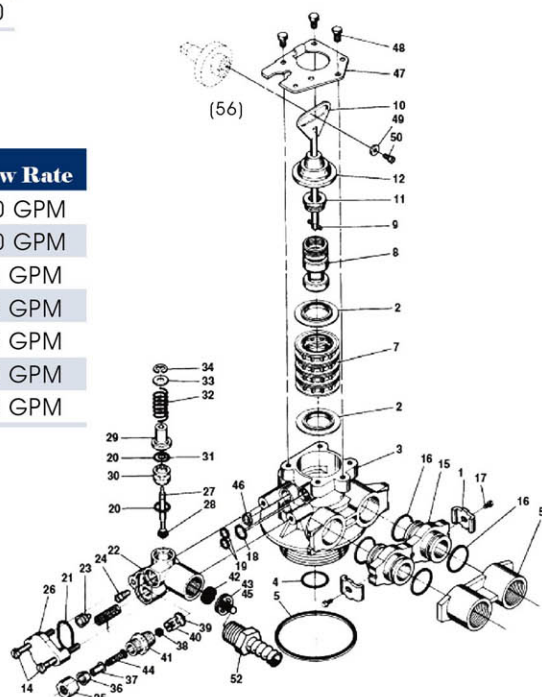
Fleck 5600,5600SXT, Installation & Repair Parts

* special order

| | | |
|---|------|-----------------|
| 3/4" S.S bypass | (57) | BPV-3400 |
| 1" S.S. bypass | (58) | BPV-1000 |
| S.S. bypass Seal | (58) | WS-14105 |
| Plastic bypass | (59) | WS-60049 |
| 3/4" plastic NPT yoke | (60) | WS-18706-02 |
| 1" plastic NPT yoke | (61) | WS-18706 |
| * 3/4" sweat yoke | | WS-13708-45 |
| 1" sweat yoke | | WS-13708-40 |
| * 1-1/4" sweat yoke | | WS-40636-49 |
| * elbow adapter, 90 degree w/ clips (62) | | WS-19620-01 |
| * Softener piston (8-12) | | WS-60102-00 |
| * Softener piston, low water (8-12) | | WS-60102-20 |
| * Filter piston (8-12) | | WS-60102-10 |
| * Main gear (56) | | WS-13170 |
| * Seal kit (7) | | WS-60125 |
| * Brine valve (27-34) | | WS-60032 |
| * Meter cover std. | | WS-14038 |
| * Drain o-ring (18) | | WS-12638 |
| * O-ring, injector (2) | (19) | WS-13301 |
| * O-ring, injector cover (21) | | WS-13303 |
| * O-ring, Brine valve (20) | | WS-13302 |
| * 24V.motor | | WS-19659-1 |
| * 110V.motor | | WS-18743-1 |
| 5600 rebuild kit | | WS-5600REBUILD |
| * 5600SXT piston assy, downflow | | WS-60102-71 |
| * Mechanical meter assembly | | WS-60086 |
| * Electronic meter assy for 5600SXT, mini | | WS-19797 |
| * Electronic meter assy for 5600SXT, paddle | | WS-60086-50 |
| * 5600 powerhead assembly metered 24 volt | | WS-5600PH-M-24 |
| * 5600 powerhead assembly metered 110 volt | | WS-5600PH-M-110 |



Backwash Filter Injector Option



Fleck DLFC Buttons

* All parts below are special order

| DLFC Buttons | Size | Flow Rate | DLFC Buttons | Size | Flow Rate |
|--------------|------|-----------|--------------|------|-----------|
| WS-19153 | .69" | .6 GPM | WS-17943 | .95" | 8.0 GPM |
| WS-19152 | .69" | .8 GPM | WS-17944 | .95" | 9.0 GPM |
| WS-19151 | .69" | 1.0 GPM | WS-16529 | .95" | 10 GPM |
| WS-12085 | .69" | 1.2 GPM | WS-16735 | .95" | 12 GPM |
| WS-19159 | .69" | 1.3 GPM | WS-16736 | .95" | 15 GPM |
| WS-12086 | .69" | 1.5 GPM | WS-16528 | .95" | 20 GPM |
| WS-19149 | .69" | 1.7 GPM | WS-16737 | .95" | 25 GPM |
| WS-12087 | .69" | 2.0 GPM | | | |
| WS-12088 | .69" | 2.4 GPM | | | |
| WS-12089 | .69" | 3.0 GPM | | | |
| WS-12090 | .69" | 3.5 GPM | | | |
| WS-12091 | .69" | 4.0 GPM | | | |
| WS-19174 | .69" | 4.5 GPM | | | |
| WS-12092 | .69" | 5.0 GPM | | | |
| WS-17814 | .69" | 6.0 GPM | | | |
| WS-12408 | .69" | 7.0 GPM | | | |

RO Accessories

RO Systems

DMT Fittings

Water Softeners

Falcon Stainless



Benefits & Features

304 Series corrugated stainless steel
Ease of installation saves time & money
No rubber or plastic hose to reduce flow
Largest inner diameter for required GPM
No deformity in curvature, will hold bend
Manufactured to US Military/
Aerospace specifications

3/4" FIP X 3/4" FIP Connectors



WS-FF-15

| Part # | Length |
|-----------|--------|
| WS-FF-12 | 12" |
| WS-FF-15 | 15" |
| WS-FF-18 | 18" |
| WS-FF-24 | 24" |
| WS-FF-36* | 36" |
| WS-FF-48* | 48" |

1-1/4" FIP X 1-1/4" FIP Connectors



| Part # | Length |
|--------------|--------|
| WS-SWC114-18 | 18" |
| WS-SWC114-24 | 24" |

1-1/2" FIP X 1-1/2" FIP Connector

| Part # | Length |
|--------------|--------|
| WS-SWC112-18 | 18" |
| WS-SWC112-24 | 24" |

2" FIP X 2" FIP Connector

| Part # | Length |
|------------|--------|
| WS-SWC2-18 | 18" |
| WS-SWC2-24 | 24" |



WS-SWC2-18

John Guest X FIP



WS-PTC23-JG-18

| Part # | Length |
|----------------|------------|
| WS-PTC34-JG-18 | 3/4" x 18" |
| WS-PTC34-JG-24 | 3/4" x 24" |
| WS-PC1JG-IN | 1" x 18" |

* Special order

1" FIP X 1" FIP Connectors



WS-SWC1-24

| Part # | Length |
|-------------|--------|
| WS-SWC1-12 | 12" |
| WS-SWC1-18 | 18" |
| WS-SWC1-24 | 24" |
| WS-SWC1-36* | 36" |
| WS-SWC1-48* | 48" |

Falcon stainless flows 17% more than copper flex, 31% more than other 3/4" CSS connectors, and 134% more than braided.

Save time and money on installations. Falcon Stainless connectors help you meet vessel manufacturer requirements for a flexible connection between the hard piping and tank openings.

*Special order only, not a stock item.

Tank Jackets

No cheap plastic wrap tank jackets here.
Only high quality USA made tank jackets in 5 styles

"430 bright stainless" is technically stainless steel. When installed outside or in wet, salt air environments it can show some signs of corrosion over time. A periodic coat of car wax will help prolong the mirror like finish. We recommend using the 304 stainless steel in harsh environments.



Crimped w/ plastic cap

| Part# | Description |
|---------------|--|
| JC-0948-W/CAP | 9X48 430 Bright Stainless, Crimped with Plastic Cap |
| JC-1054-W/CAP | 10X54 430 Bright Stainless, Crimped with Plastic Cap |
| JC-1252-W/CAP | 12X52 430 Bright Stainless, Crimped with Plastic Cap |
| JC-1354-W/CAP | 13X54 430 Bright Stainless, Crimped with Plastic Cap |
| JC-0948-FX | 9X48 430 Bright Stainless Fully Welded |
| JC-1054-FX | 10X54 430 Bright Stainless Fully Welded |
| JC-1252-FX | 12X52 430 Bright Stainless Fully Welded |
| JC-10-CAP | 10" black plastic jacket cap |
| JC-12-CAP | 12" black plastic jacket cap |

Brine Tanks

Brine tanks are made of polyethylene to ensure years of trouble free service. All of brine tanks include a 3/8" safety float assembly, brine grid, and a locking lid. The nestable design allows up to 5 brine tanks to be boxed together for easier and more economical shipping.



| Part # | Description | Capacity | Salt capacity |
|----------------|-----------------------------------|----------|---------------|
| BT-PG1313-BK | 13"X13"X34" black, square | 18 gal | 175 lbs. |
| BT-PG1515-BK | 15"X15"X34" black, square | 26 gal | 225 lbs. |
| BT-PG1830-BK | 18"X30" black round | 26 gal | 225 lbs. |
| BT-PE1840-BK-1 | 18"X40" black, round, 3/8" safety | 44 gal | 425 lbs. |



Attractive heavy-duty design

Blow-molded from FDA-approved high density polyethylene to give exceptional stress crack-resistant properties for years of trouble-free service

Packaged in protective, durable shipping carton

Optional injection molded salt grid promotes uniform brining and reduces salt bridging

Brine tanks available in different colors by special order only. Blue, Almond, white, Platinum

Structural Poly Glass



Features

- Slim diameter with capacities from 2-to 49 gallons
 - Unmatched for strength and chemical resistance
 - Easy to handle and install
 - Inner shell of polyethylene
- Threaded inlet available in various sizes

Operating Parameters

- Safety factor: 4:1
- Minimum burst at 600psi
- Tested to 250,000 cycles without leakage

| PART NO. | Size | Opening | Gal | Cu.Ft. | Bulk qty / weight |
|----------------|---------|---------|------|--------|-------------------|
| PFX-0948-25-BK | 9"X48" | 2.5" | 10.9 | 1.58 | 16/ 207 lbs. |
| PFX-1054-25-BK | 10"X54" | 2.5" | 16.4 | 2.19 | 16/ 237 lbs. |
| PFX-1252-25-BK | 12"X52" | 2.5" | 22.2 | 2.97 | 9/ 176 lbs. |
| PFM-1354-25-BK | 13"X54" | 2.5" | 27.5 | 3.68 | 9/ 256 lbs. |

* ONLY AVAILABLE IN BLACK

Softening Resin

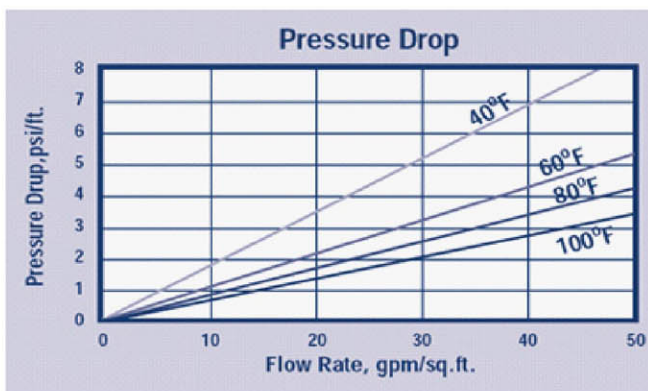
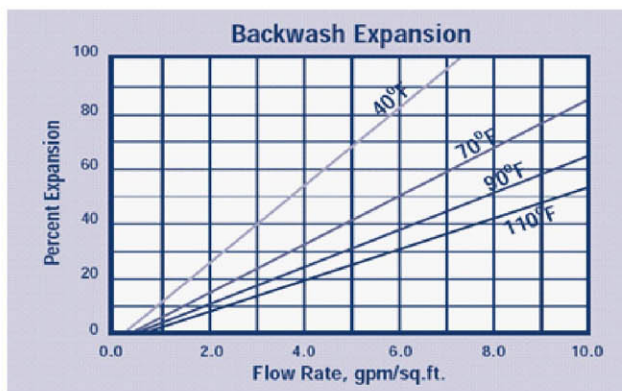
C-PC003 8% WQA Gold Seal Certified

PureGen does not compromise on the quality of our water softener resin. C-PC003 is a high purity premium grade, high capacity, gelular, sulfonated, polystyrene cation resin supplied in the sodium form as moist, tough, uniform, spherical beads. PC003 is intended for use in all water softening, dealkalization, deionization and chemical processing applications.



C-PC005 10% Softening Resin

Upgrade to a 10% crosslink resin for applications that have chlorinated water supplies. This oxidation resistant high capacity softening resin is a popular upgrade for customers who demand the best quality at a reasonable price.



| Part # | Description | Pallet Qty |
|---------|--|------------|
| C-PC003 | 1 Cu. Ft. WQA Gold Seal 8% crosslink softening resin | 40 |
| C-PC005 | 1 Cu. Ft. 10% Crosslink resin | 40 |

We can source resin by the container for you.
Contact PureGen for your consolidated container sourcing needs.

Fig. 3 OPERATING CAPACITY, CB

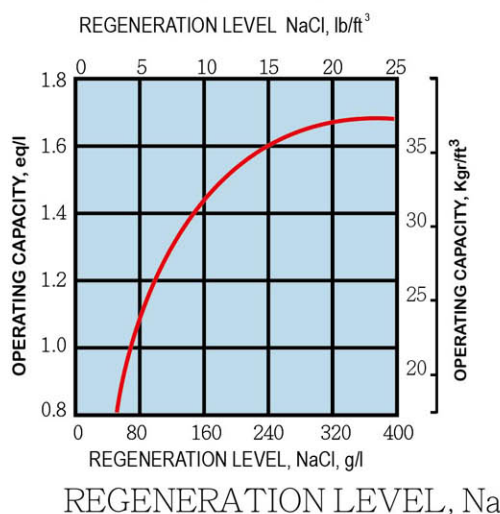
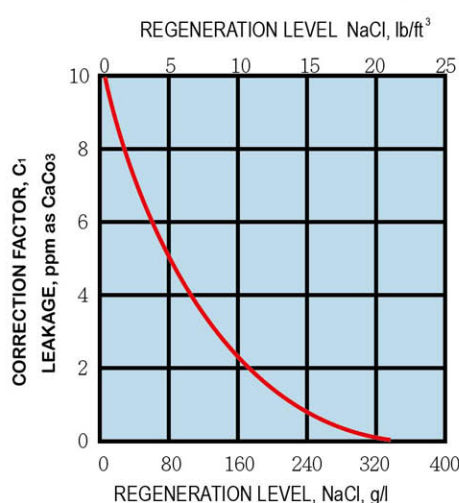


Fig. 5 HARDNESS LEAKAGE



Specialty Resins

PureGen stocks many popular resins for specialty applications. Ion exchange resins are available for troubled waters including Nitrate and Tannin removal, water purification, and much more. We are able to source many more resins to meet your specific needs. Please contact PureGen for more details.

PureGen Mixed Bed D.I. resin is an excellent choice for your water purification needs. Economical, high capacity and low odor. This high quality resin mixture is for direct purification of water. The residuals produce an average conductivity value of about 0.1us/cm for a major portion of the service run which may be extended depending up on the final water quality acceptable.

PureGen Nuclear Grade Mixed Bed D.I. is popular for most applications. This resin can produce water quality in excess of 15-18 MΩ (megohm). This media is an excellent choice for polishing R.O. water. Our special manufacturing process minimizes the odor common with lower grade D.I. resins.

PureGen Color Changing Mixed Bed D.I. Resin changes from green to blue when the media is exhausted. This media is commonly used in the Aquarium and Hydroponics industries. PureGen stocks several clear filter housings and empty refillable cartridges that are ideal for use with this resin.



Color Change Resin changes from green to blue as the DI capacity is depleted.

| Part# | Description | Brand | Weight |
|------------|--|---------|--------|
| WS-MBDI | Deionization, standard grade common for mobile car detailers | PureGen | 50 |
| WS-MBDI-NG | Nuclear Grade D.I. resin. Ultra high purity | PureGen | 50 |
| WS-MBDI-CC | Color changing D.I. resin, common for aquarium use | PureGen | 50 |

KDF 55 & KDF 85

KDF 55 Medium

Designed specifically for removing or reducing chlorine and water-soluble heavy metals. It controls scale, bacteria and algae, even in hot water.

The process medium recently received NSF International Certification and is certified by NSF to NSF/ANSI Standard 42 – Drinking Water Treatment Units – Aesthetic Effects. This medium is also in compliance with California's Health and Safety Code Section 166875 (or commonly known as AB1953) and Vermont Act 193.

KDF 85 Medium

Removes or reduces iron and hydrogen sulfide from municipal or other water supplies. Also controls scale, bacteria and algae.



KDF 55 Process

Medium Applications:

Chlorine, Heavy Metal
Removal and Bacteria



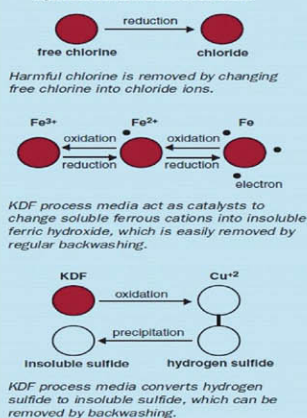
KDF 85 Process

Medium Applications:

Iron and Hydrogen
Sulfide



Typical Redox Reaction



Engineering Guidelines for KDF Media

| Maximum Service Flow (gpm) | Tank Size Diameter (inches) | Backwash Valve Required | Distributor | Minimum Backwash Rate (gpm) | Pipe Size Diameter (inches) | Bed Depth (inches) | KDF Process Media | | |
|----------------------------|-----------------------------|-------------------------|-----------------|-----------------------------|-----------------------------|--------------------|-------------------|-----------------|--------------|
| | | | | | | | Weight (lbs) | Volume (cu.ft.) | No. of Drums |
| 3 | 6x35 | 3-cycle | Fine slotted | 6 | 0.75 | 10 | 28.5 | 0.16 | 0.5 |
| 4 | 7x35 | | | 8 | 0.75 | 11 | 42.8 | 0.25 | 0.75 |
| 5.5 | 8x40 | | | 10 | 0.75 | 12 | 57.0 | 0.33 | 1.0 |
| 6 | 9x44 | | | 12 | 0.75 | 13 | 85.5 | 0.50 | 1.5 |
| 8 | 10x44 | | | 16 | 0.75 | 14 | 144.0 | 0.66 | 2.0 |
| 11 | 12x48 | | | 22 | 1 | 16 | 171.0 | 1.04 | 3.0 |
| 15 | 14x65 | Diaphragm nest | Hub and lateral | 30 | 1 | 18 | 285.0 | 1.60 | 5.0 |
| 20 | 16x65 | | | 40 | 1.5 | 20 | 399.0 | 2.33 | 7.0 |
| 25 | 18x65 | | | 50 | 1.75 | 22 | 627.0 | 3.50 | 11.0 |
| 36 | 21x62 | | | 72 | 2 | 24 | 855.0 | 5.00 | 15.0 |
| 45 | 24x72 | | | 90 | 2 | 25 | 1140.0 | 6.50 | 20.0 |
| 72 | 30x70 | | | 144 | 2.5 | 25 | 1767.0 | 10.25 | 31.0 |
| 100 | 36x70 | | | 200 | 2.5 | 25 | 2565.0 | 14.75 | 45.0 |
| 144 | 42x73 | | | 288 | 3 | 25 | 3420.0 | 20.00 | 60.0 |
| 188 | 48x78 | | | 376 | 4 | 25 | 4446.0 | 26.00 | 78.0 |
| 324 | 63x86 | | | 648 | 5 | 25 | 7695.0 | 45.00 | 135.0 |

Available by the pound or in 57 lb. drums. Each drum is .33 cubic feet.

KDF 55 and KDF 85 Process Media can remove up to 99% of water-soluble lead, mercury, nickel, chromium, and other dissolved metals. All KDF Process Media forms are effective in controlling the buildup of bacteria, algae, fungi and scale, making them ideal for use in GAC beds, ion exchange resins, carbon block filters and inline carbon filters. Wherever our Media are used, they can eliminate the need for costly, and sometimes harmful, chemical treatments.

Granular Activated Carbon (GAC)

Granular activated carbon is used for the reduction of taste, odors, and dissolved organic chemicals from water supplies. Highly effective at reducing chlorine from chlorinated water supplies. A high surface area results in an exceptionally high capacity and efficiency. Catalytic, High Activity, and Enhanced carbons are especially effective at removing chloramines and Hydrogen Sulfide.



C-SCN-1240-N

Our house brand GAC is a high quality "NSF LISTED" Acid Washed Coconut Shell Carbon in a 12X40 mesh. Our best seller due to its budget price and exceptional quality. Available in 1 Cu. Ft. bags. Our granular activated carbon rinses down quickly for faster start up and less call backs due to carbon fines.

| | | |
|--------------|---------------|-----------|
| C-SCN-1240-N | 1 Cu. Ft. bag | 28 pounds |
|--------------|---------------|-----------|



Clack CAT-HAC

Catalytic High Activity Carbon is a coconut shell based carbon specifically designed for the reduction of Chloramines and Hydrogen Sulfide from potable water. Its large micropore volume also makes it particularly well suited for the removal of low molecular weight organic compounds and their chlorinated byproducts such as chloroform and other trihalomethanes (THMs).

| | | |
|----------|---------------|-----------|
| WS-A8062 | 1 Cu. Ft. bag | 28 pounds |
|----------|---------------|-----------|

Gravel



Used to protect and enhance bottom distributors. Used in most systems as the base media. Available in 50 pound bags, or 1000 pound super sacks.

| | | |
|-----------|-----------------|-------------|
| WS-GRAVEL | 1/2 Cu. Ft bags | 50 pounds |
| | Super Sack | 1000 Pounds |

Other Medias

Activated Alumina

Activated Alumina: Used for the removal of arsenic, fluoride, selenium, silica, and humic acid. When using for arsenic and fluoride removal, a low PH(5.5-6) is desired. It can be regenerated with sodium hydroxide. Our activated alumina is preregenerated with aluminum sulfate for maximum capacity.

| | | |
|----------------|---------------|-----------|
| WS-ACTIVATEDAL | 1 Cu. Ft bags | 43 pounds |
|----------------|---------------|-----------|

Calcite

Calcite is a naturally occurring calcium carbonate media. When properly applied, it corrects pH only enough to reach a non-corrosive equilibrium. A consumable media that needs periodic replenishment.

| | | |
|------------|-----------------|-----------|
| WS-CALCITE | .55 Cu. Ft bags | 50 pounds |
|------------|-----------------|-----------|

Corosex

Corosex is a highly reactive Magnesium oxide media that can correct 5X more acidity than Calcite on a per weight basis. Under low flow conditions, Corosex can create a high pH condition. A consumable media that needs periodic replenishment.

| | | |
|------------|-----------------|-----------|
| WS-COROSEX | .66 Cu. Ft bags | 50 pounds |
|------------|-----------------|-----------|

Slophos

Slow dissolving polyphosphate typically used for applications where scale needs to be minimized. Also used to sequester iron and hardness to prevent scaling and precipitation reactions in beverage and ice making equipment. They can also be used as anti-scalers for pre R/O or distillation. Somewhat effective in extending time between service on tank less water heaters.

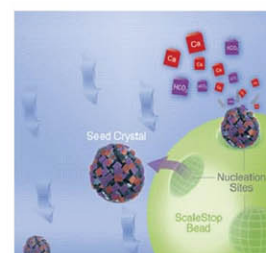
| | | |
|---------|------|-----------|
| SLOPHOS | Drum | 50 pounds |
|---------|------|-----------|

SP3

SP3 Anti-scaling media transform calcium and magnesium ions into "nano-crystals" lessening their ability to attach to plumbing or your appliances. These "nano-crystals" easily rinse away with water. Featured in our "SAFE" and "Eco-Safe" systems.

| | | |
|-----------|---------------|------------|
| WS-CWGSP3 | 1 Liter bag | 2 pounds |
| | 60 Liter drum | 112 pounds |

The Filtersorb SP3 De-saling Process



Softener System Estimated Flow Rates

| Tank Diameter inches | 8 | 9 | 10 | 12 | 13 | 14 | 16 | 18 | 20 | 22 | 24 | 30 | 36 | 42 | 48 | 63 |
|--------------------------|------|-----|------|------|------|------|------|------|------|------|------|-----|------|------|------|-----|
| Sqaure Foot Surface Area | 0.34 | 0.4 | 0.54 | 0.78 | 0.92 | 1.06 | 1.39 | 1.76 | 2.18 | 2.63 | 3.14 | 4.9 | 7.06 | 9.62 | 12.6 | 16 |
| Resin Cubic Feet | 0.75 | 1 | 1.5 | 2 | 2.5 | 3 | 4 | 5 | 6 | 7 | 10 | 15 | 20 | 25 | 35 | 60 |
| Suggested Peak GPM | 6 | 8 | 10 | 15 | 18 | 21 | 27 | 35 | 43 | 52 | 62 | 98 | 141 | 192 | 252 | 318 |

Fleck / Pentair

Estimated Peak w/ 15 PSI drop

| 7000 w/ high flow piston | 10 | 14 | 16 | 18 | 18 | 20 | 20 | 20 | 24 | 24 | | | | | | |
|--------------------------|----|----|----|----|----|----|----|----|----|----|----|-----|-----|-----|-----|-----|
| 5600 | 8 | 10 | 10 | 12 | | | | | | | | | | | | |
| 5000 ProFlo, 5S00SXT | 10 | 11 | 11 | 13 | 13 | 13 | 13 | | | | | | | | | |
| 4650 | 10 | 10 | 10 | 12 | | | | | | | | | | | | |
| 6700 | 8 | 10 | 10 | 12 | | | | | | | | | | | | |
| 2510 | 9 | 9 | 9 | 11 | 11 | 11 | 11 | | | | | | | | | |
| 9000 | 10 | 13 | 13 | 15 | 15 | 15 | 15 | | | | | | | | | |
| 9100SXT | 10 | 13 | 13 | 15 | 15 | 16 | 16 | | | | | | | | | |
| 9500SXT | | | | 23 | 25 | 26 | 29 | 30 | 32 | 35 | 35 | | | | | |
| 2750 | 10 | 13 | 16 | 18 | 18 | 19 | 20 | 20 | 22 | 22 | | | | | | |
| 2850 | | | | 23 | 27 | 30 | 33 | 35 | 37 | 40 | 41 | 44 | | | | |
| 2850s | | | | 25 | 30 | 35 | 40 | 45 | 45 | 45 | 50 | 56 | 56 | | | |
| 2900s | | | | 23 | 27 | 31 | 41 | 50 | 55 | 65 | 68 | 84 | | | | |
| 3150 | | | | 23 | 27 | 31 | 41 | 50 | 55 | 65 | 68 | 72 | 78 | 78 | 80 | 80 |
| 3900 | | | | | | | | | | | 94 | 147 | 185 | 200 | 213 | 238 |

Clack Corporation

Estimated Peak w/ 15 PSI drop

| WS1 | 10 | 13 | 16 | 18 | 18 | 19 | 20 | 20 | 20 | | | | | | | |
|-------|----|----|----|----|----|----|----|----|----|----|----|----|-----|-----|-----|---------|
| WS125 | 10 | 14 | 16 | 18 | 18 | 20 | 20 | 20 | 22 | | | | | | | |
| WS1.5 | | | | 25 | 30 | 35 | 40 | 45 | 45 | 45 | 45 | | | | | |
| WS2 | | | | 25 | 30 | 35 | 40 | 45 | 50 | 54 | 54 | | | | | |
| WS2H | | | | | | | | | | | | 80 | 90 | 90 | 95 | 95 100 |
| WS3 | | | | | | | | | | | | 94 | 147 | 185 | 200 | 213 238 |

GE / Autotrol

Estimated Peak w/ 15 PSI drop

| 255 | 9 | 9 | 9 | 11 | 11 | 11 | | | | | | | | | | |
|-----------------|----|----|----|----|----|----|----|----|----|----|----|----|----|----|--|--|
| 268/Performa | 10 | 13 | 15 | 16 | 16 | 16 | | | | | | | | | | |
| Magnum Cv | | | | | | | 31 | 41 | 48 | 55 | 55 | 56 | 62 | 63 | | |
| Magnum Cv NHWBP | | | | | | | 31 | 39 | 43 | 51 | 51 | 52 | 59 | 60 | | |

Residential Water Softener Sizing Chart

NUMBER OF OCCUPANTS

| H | 2 | 3 | 4 | 5 | 6 | 7 | 8 | 9 |
|------|-------------|-------------|-------------|-------------|------------------|------------------|----------------|----------------|
| A 50 | 2 cu. ft. | 3 cu. ft. | 4 cu. ft. | 5 cu. ft. | 1.5 cu. ft. twin | 1.5 cu. ft. twin | 3 cu. ft. twin | 2 cu. ft. twin |
| R 45 | 2 cu. ft. | 2.5 cu. ft. | 4 cu. ft. | 5 cu. ft. | 1.5 cu. ft. twin | 1.5 cu. ft. twin | 3 cu. ft. twin | 2 cu. ft. twin |
| D 40 | 1.5 cu. ft. | 2.5 cu. ft. | 3 cu. ft. | 4 cu. ft. | 5 cu. ft. | 1.5 cu. ft. twin | 3 cu. ft. twin | 3 cu. ft. twin |
| N 35 | 1.5 cu. ft. | 2 cu. ft. | 3 cu. ft. | 4 cu. ft. | 4 cu. ft. | 5 cu. ft. | 3 cu. ft. twin | 3 cu. ft. twin |
| E 30 | 1.5 cu. ft. | 2 cu. ft. | 2.5 cu. ft. | 3 cu. ft. | 4 cu. ft. | 4 cu. ft. | 5 cu. ft. | 3 cu. ft. twin |
| S 25 | 1 cu. ft. | 1.5 cu. ft. | 2 cu. ft. | 2.5 cu. ft. | 3 cu. ft. | 4 cu. ft. | 4 cu. ft. | 5 cu. ft. |
| S 20 | 1 cu. ft. | 1.5 cu. ft. | 1.5 cu. ft. | 2 cu. ft. | 2.5 cu. ft. | 3 cu. ft. | 3 cu. ft. | 4 cu. ft. |
| 15 | 1 cu. ft. | 1 cu. ft. | 1.5 cu. ft. | 1.5 cu. ft. | 2 cu. ft. | 2 cu. ft. | 2.5 cu. ft. | 3 cu. ft. |
| G 10 | 1 cu. ft. | 1 cu. ft. | 1 cu. ft. | 1 cu. ft. | 1.5 cu. ft. | 2 cu. ft. | 1.5 cu. ft. | 2 cu. ft. |
| P 5 | 1 cu. ft. | 1 cu. ft. | 1 cu. ft. | 1 cu. ft. | 1 cu. ft. | 1 cu. ft. | 1 cu. ft. | 1 cu. ft. |
| G | | | | | | | | |

This chart is based on 6#'s of salt per cu. ft and only considers hardness, not flow rates.
 Single tank system should regenerate no less than every 5th day for maximum efficiency.
 Twin tank systems should regenerate no more than once daily.
 4 and 5 cu. Ft. systems can be replaced with a twin system at a similar cost.

Water Velocity in Pipe in GPM

Pipe diameter in inches

| Velocity Feet per Second | 1/2 | 3/4 | 1 | 1-1/4 | 1-1/2 | 2 | 2-1/2 | 3 | 4 | 6 |
|--------------------------------|-----|-----|-----|-------|-------|----|-------|-----|-----|-----|
| 4 | 2.9 | 5.4 | 8.9 | 16 | 22 | 36 | 52 | 82 | 140 | 320 |
| 5 | 3.6 | 6.8 | 11 | 20 | 27 | 46 | 66 | 102 | 180 | 410 |
| 6 | 4.4 | 8.2 | 13 | 27 | 33 | 55 | 79 | 123 | 220 | 480 |
| 8 | 6 | 11 | 18 | 31 | 44 | 74 | 105 | 165 | 280 | 650 |
| 10 | 7.4 | 13 | 22 | 40 | 55 | 92 | 130 | 205 | 360 | 820 |

Note: Velocities exceeding 9 FPS can cause vibration, excessive noise, and loosen hanging hardware.

Maximum Recommended Velocity in GPM

| Piping Material | Maximum Velocity in Ft/Sec |
|--------------------------|----------------------------|
| Copper tubing cold water | 8 |
| Copper tubing hot water | 5 |
| Galvanized Steel Pipe | 8 |
| CPVC Pipe | 10 |
| Pex Tubing | 12 |

Flow Capacity of Pipe in GPM

Pipe diameter in inches

| Water Pressure | 3/4 | 1 | 1-1/4 | 1-1/2 | 2 | 2-1/2 | 3 | 4 | 6 |
|-------------------|-----|----|-------|-------|-----|-------|-----|------|------|
| 10 psi | 8 | 14 | 39 | 44 | 86 | 137 | 270 | 495 | 1450 |
| 20 psi | 11 | 21 | 58 | 65 | 126 | 200 | 395 | 725 | 2125 |
| 40 psi | 16 | 31 | 84 | 94 | 183 | 290 | 575 | 1070 | 3100 |
| 60 psi | 20 | 38 | 104 | 117 | 227 | 360 | 715 | 1315 | 3850 |
| 80 psi | 24 | 44 | 121 | 137 | 265 | 420 | 835 | 1535 | 4480 |
| 100 psi | 28 | 50 | 137 | 155 | 300 | 480 | 945 | 1735 | 5075 |

Note: Water flow should never exceed 8-9 FPS unless the system is engineered for higher velocities

Brine Tank Volumes

Tank diameter in inches

| | 11 | 18 | 22 | 24 | 30 | 39 | 42 | 50 | 60 |
|-------------|------|------|------|------|------|------|----|------|-------|
| Gal./inch | 0.41 | 1.1 | 1.65 | 1.96 | 3.05 | 5.18 | 6 | 8.5 | 12.26 |
| Gal. w/salt | 0.2 | 0.55 | 0.8 | 1 | 1.5 | 2.5 | 3 | 4.25 | 6 |

Note: Estimates only, salt type and condition will cause these numbers to vary

Media Backwash Rates By Vessel Diameter

| Media | Backwash rate GPM per square foot | Pressure Vessel Diameter | | | | | | | | | | | | | | | | | |
|-------------------|-----------------------------------|--------------------------|-----|-----|-----|-----|-----|-----|-----|-----|-----|-----|-----|-----|-----|-----|-----|-----|-----|
| | | 5" | 6" | 7" | 8" | 9" | 10" | 12" | 13" | 14" | 16" | 18" | 21" | 24" | 30" | 36" | 42" | 48" | 63" |
| Softening resin | 5 | 0.7 | 1 | 1.3 | 1.7 | 2.2 | 2.7 | 3.9 | 4.6 | 5.3 | 7 | 9 | 12 | 15 | 25 | 35 | 50 | 60 | 100 |
| Anion Resin | 3 | 0.4 | 0.6 | 0.8 | 1 | 1.3 | 1.6 | 2.4 | 2.8 | 3.2 | 4 | 5 | 7 | 9 | 15 | 20 | 30 | 40 | 60 |
| Filox | 20-30 | 3.4 | 5 | 6.5 | 9 | 11 | 15 | 20 | 25 | 25 | 35 | 45 | 60 | 80 | 125 | 175 | 250 | 315 | 550 |
| Pyrolox | 20-30 | 3.4 | 5 | 6.5 | 9 | 11 | 15 | 20 | 25 | 25 | 35 | 45 | 60 | 80 | 125 | 175 | 250 | 315 | 550 |
| Birm | 10-12 | 1.4 | 2 | 2.6 | 3.5 | 4.4 | 5.5 | 8 | 9 | 11 | 15 | 18 | 25 | 30 | 50 | 70 | 100 | 125 | 215 |
| MTM | 8-12 | 1.4 | 2 | 2.6 | 3.5 | 4.4 | 5.5 | 8 | 9 | 11 | 15 | 18 | 25 | 30 | 50 | 70 | 100 | 125 | 215 |
| GreenSand | 10-12 | 1.4 | 2 | 2.6 | 3.5 | 4.4 | 5.5 | 8 | 9 | 11 | 15 | 18 | 25 | 30 | 50 | 70 | 100 | 125 | 215 |
| GreenSand + | 12 | 1.6 | 2.4 | 3.2 | 4 | 5.3 | 6.5 | 9 | 11 | 13 | 17 | 20 | 30 | 40 | 60 | 85 | 115 | 150 | 260 |
| NextSand | 15-20 | 2.5 | 3.5 | 5 | 6 | 8 | 15 | 17 | 20 | 25 | 25 | 30 | 45 | 55 | 90 | 125 | 175 | 225 | 400 |
| Turbidex` | 15-21 | 2.5 | 3.5 | 5 | 6 | 8 | 15 | 17 | 20 | 25 | 25 | 30 | 45 | 55 | 90 | 125 | 175 | 225 | 400 |
| Filter Ag+ | 15-20 | 2.5 | 3.5 | 5 | 6 | 8 | 15 | 17 | 20 | 25 | 25 | 30 | 45 | 55 | 90 | 125 | 175 | 225 | 400 |
| Micro-Z | 15-20 | 2.5 | 3.5 | 5 | 6 | 8 | 15 | 17 | 20 | 25 | 25 | 30 | 45 | 55 | 90 | 125 | 175 | 225 | 400 |
| Zeolite | 15-20 | 2.5 | 3.5 | 5 | 6 | 8 | 15 | 17 | 20 | 25 | 25 | 30 | 45 | 55 | 90 | 125 | 175 | 225 | 400 |
| Filter Ag | 8-10 | 1.4 | 2 | 2.6 | 3.5 | 4.4 | 5.5 | 8 | 9 | 11 | 15 | 18 | 25 | 30 | 50 | 70 | 100 | 125 | 215 |
| KDF 55 | 25 | 3.4 | 5 | 6.5 | 9 | 11 | 15 | 20 | 25 | 25 | 35 | 45 | 60 | 80 | 125 | 175 | 250 | 315 | 550 |
| KDF 85 | 25 | 3.4 | 5 | 6.5 | 9 | 11 | 15 | 20 | 25 | 25 | 35 | 45 | 60 | 80 | 125 | 175 | 250 | 315 | 550 |
| Sand or gravel | 15-20 | 2.5 | 3.5 | 5 | 6 | 8 | 15 | 17 | 20 | 25 | 25 | 30 | 45 | 55 | 90 | 125 | 175 | 225 | 400 |
| GAC | 10 | 1.4 | 2 | 2.6 | 3.5 | 4.4 | 5.5 | 8 | 9 | 11 | 15 | 18 | 25 | 30 | 50 | 70 | 100 | 125 | 215 |
| Activated Alumina | 8-10 | 1.4 | 2 | 2.6 | 3.5 | 4.4 | 5.5 | 8 | 9 | 11 | 15 | 18 | 25 | 30 | 50 | 70 | 100 | 125 | 215 |
| Calcite | 8-12 | 1.4 | 2 | 2.6 | 3.5 | 4.4 | 5.5 | 8 | 9 | 11 | 15 | 18 | 25 | 30 | 50 | 70 | 100 | 125 | 215 |
| Corosex | 10-12 | 1.4 | 2 | 2.6 | 3.5 | 4.4 | 5.5 | 8 | 9 | 11 | 15 | 18 | 25 | 30 | 50 | 70 | 100 | 125 | 215 |
| Corosex II | 10-12 | 1.4 | 2 | 2.6 | 3.5 | 4.4 | 5.5 | 8 | 9 | 11 | 15 | 18 | 25 | 30 | 50 | 70 | 100 | 125 | 215 |
| #1 Anthracite | 12-18 | 2 | 3 | 4 | 5 | 6.5 | 8 | 12 | 15 | 16 | 20 | 25 | 35 | 50 | 75 | 100 | 150 | 190 | 325 |
| #1-1/2 Anthracite | 18-25 | 2.7 | 4 | 5.3 | 7 | 9 | 11 | 15 | 20 | 25 | 30 | 35 | 50 | 65 | 100 | 150 | 200 | 250 | 430 |
| #2 Anthracite | Air Scour | n/a | n/a | n/a | n/a | n/a | n/a | n/a | n/a | n/a | n/a | n/a | n/a | n/a | n/a | n/a | n/a | n/a | n/a |
| Garnet | 15-20 | 2.5 | 3.5 | 5 | 6 | 8 | 15 | 17 | 20 | 25 | 25 | 30 | 45 | 55 | 90 | 125 | 175 | 225 | 400 |
| Titanium oxide | 5 | 0.7 | 1 | 1.3 | 1.7 | 2.2 | 2.7 | 3.9 | 4.6 | 5.3 | 7 | 9 | 12 | 15 | 25 | 35 | 50 | 60 | 100 |
| Multimedia | 15 | 2 | 3 | 4 | 5 | 6.5 | 8 | 12 | 15 | 16 | 20 | 25 | 35 | 50 | 75 | 100 | 150 | 190 | 325 |
| Bayoxide E33 | 10 | 1.4 | 2 | 2.6 | 3.5 | 4.4 | 5.5 | 8 | 9 | 11 | 15 | 18 | 25 | 30 | 50 | 70 | 100 | 125 | 215 |
| GFH | 10-12 | 1.4 | 2 | 2.6 | 3.5 | 4.4 | 5.5 | 8 | 9 | 11 | 15 | 18 | 25 | 30 | 50 | 70 | 100 | 125 | 215 |
| Crushed Glass | 12-18 | 2 | 3 | 4 | 5 | 6.5 | 8 | 12 | 15 | 16 | 20 | 25 | 35 | 50 | 75 | 100 | 150 | 190 | 325 |

Most medias need periodic backwashing for proper operation. The chart above is for quick reference only. See each manufacturers media specifications for proper backwash rates. Water temperature and actual applications must be considered when determining a proper backwash rate.

How to Sanitize a Reverse Osmosis System

- Shut off RO inlet valve
- Open faucet and drain system completely, add pressure to the water storage tank until it reaches 7 PSI and all water has been expelled.
- Remove all filter cartridges including the membrane.
- Clean housings with a mild bleach and water solution, add 6 ounces of household bleach to the first filter housing and reassemble unit without the filter cartridges.
- Remove and bypass the post carbon filter.
- Turn on the RO inlet feed valve and allow the tank to fill, this should take 2-3 minutes.
- Open the drinking water faucet and allow water to run until it has a slight bleach odor, close faucet.
- Allow the system to soak for at least 5 minutes. If the systems has not been sanitized in a long time, or contamination is known, then a 1 hour soak may be required.
- After the soaking period is complete, allow the water to run out of the faucet for a few minutes to remove the bleach, turn off the inlet feed valve and allow system to drain.
- Install all new filters and membrane using proper sanitary procedures. Do not touch the filters, use sanitized gloves.
- Turn on the water feed.
- Follow standard system start up procedures
- Drain out first two tanks prior to drinking the RO water.

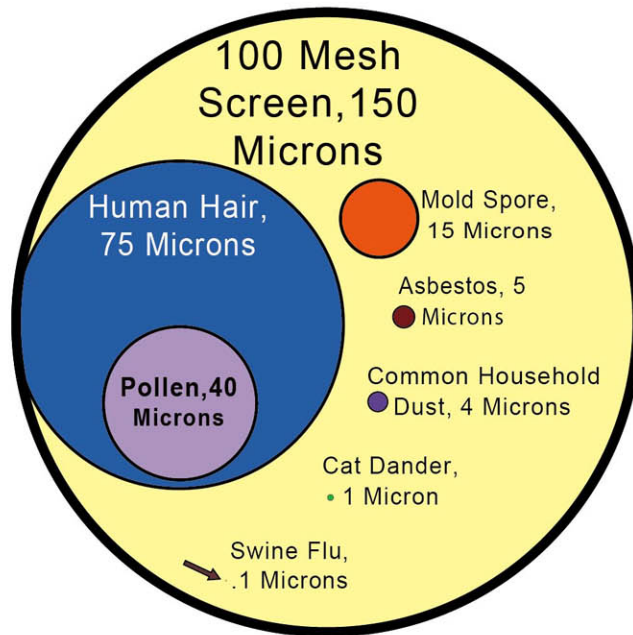
Reverse Osmosis Temperature & Pressure Correction Tables

Reverse Osmosis TFC membrane production rates are based on laboratory conditions. Water temperature, pressure, and TDS are key factors that must be considered to more accurately know the systems true production rate. The charts below will help you calculate the approximate production rates of most common membranes.

| Temperature Correction | |
|------------------------|-------------------|
| Temperature F/C | Correction Factor |
| 40° / 4° | 0.34 |
| 50° / 10° | 0.52 |
| 60° / 16° | 0.70 |
| 70° / 21° | 0.88 |
| 77° / 25° | 1 |
| 80° / 27° | 1.05 |
| 90° / 32° | 1.23 |
| 100° / 38° | 1.41 |

| Pressure Correction (60 PSI Membrane) | |
|---------------------------------------|-------------------|
| Pressure PSI | Correction Factor |
| 10 | 0.17 |
| 20 | 0.33 |
| 30 | 0.5 |
| 40 | 0.67 |
| 50 | 0.83 |
| 60 | 1 |
| 70 | 1.17 |
| 80 | 1.33 |

A Micron is one- millionth of a meter or about 0.000039 inches. This chart shows the relative size of different particles.

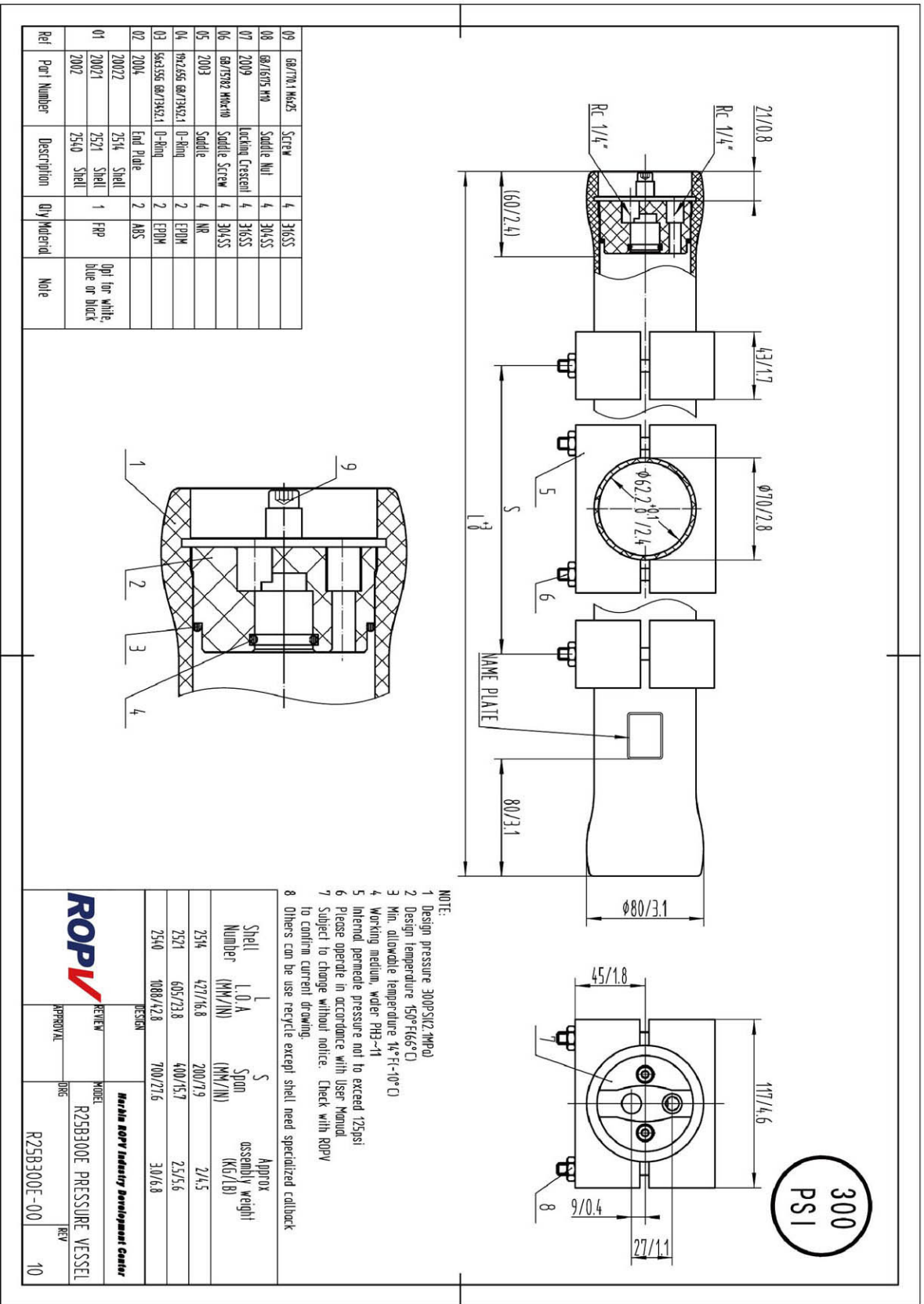


Estimated Reverse Osmosis Rejection Percentages

The reverse osmosis process uses a semi-permeable membrane to reject a wide variety of impurities. Here is a partial list.

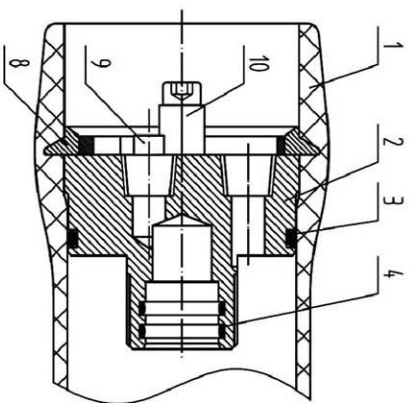
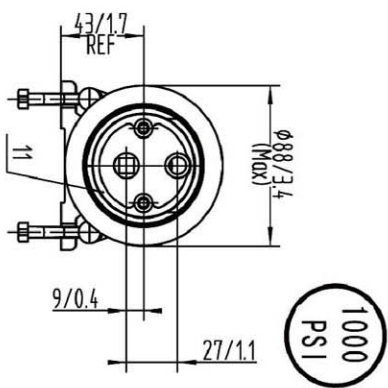
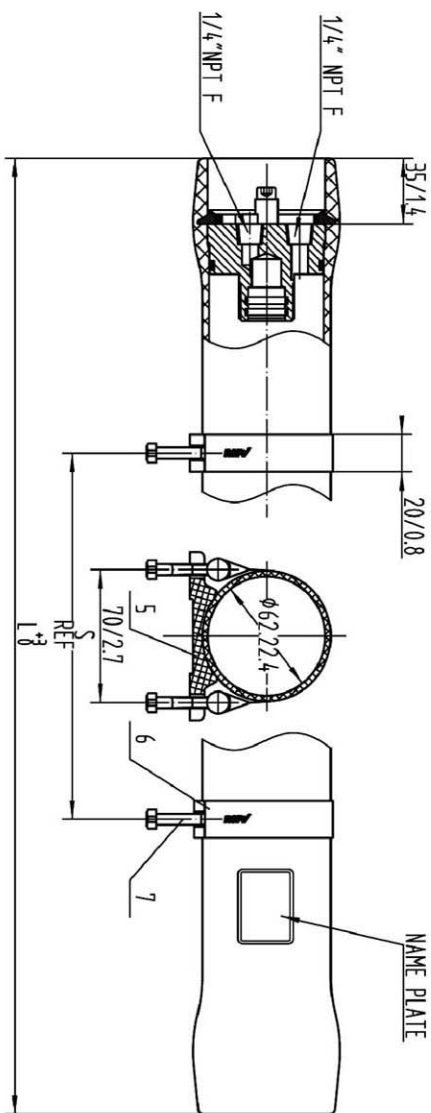
| | | | |
|------------------------------|--------|---------------|--------|
| Aluminum | 97-98% | Nickel | 97-99% |
| Ammonium | 85-95% | Nitrate | 93-96% |
| Arsenic | 94-96% | Phosphate | 99+% |
| Bacteria | 99+% | Polyphosphate | 98-99% |
| Bicarbonate | 95-96% | Potassium | 92% |
| Boron | 50-70% | Pyrogen | 99+% |
| Bromide | 93-96% | Radioactivity | 95-98% |
| Cadmium | 96-98% | Radium | 97% |
| Calcium | 96-98% | Selenium | 97% |
| Chloride | 94-95% | Silica | 85-90% |
| Chromate | 90-98% | Silicate | 95-97% |
| Chromium | 96-98% | Silver | 95-97% |
| Copper | 97-99% | Sodium | 92-98% |
| Cyanide | 90-95% | Sulphate | 99+% |
| Ferrocyanide | 98-99% | Sulphite | 96-98% |
| Fluoride | 94-96% | Zinc | 98-99% |
| Iron | 98-99% | Insecticides | 97% |
| Lead | 96-98% | Detergents | 97% |
| Magnesium | 96-98% | Herbicides | 97% |
| Manganese | 96-98% | Virus | 99+% |
| Mercury | 96-98% | Hardness | 93-97% |
| TDS (Total Dissolved Solids) | 95-99% | | |

Spec sheets/drawings



Spec sheets/drawings

| Ref | Part Number | Description | Qty | Material | Note |
|-----|-------------|----------------------|------|------------------------|--------------------|
| 11 | 2012 | Securing Ring | 2 | 316SS | |
| 10 | 2010 | Screw | 4 | 316SS | M6x25 |
| 09 | 2011 | Pin | 1 | A85 | |
| 08 | 2009.1 | Locking Kiti Segment | 2 Sd | 316SS | |
| 07 | 2008 | Strip Screw | 4 | 304SS | M6x60 |
| 06 | 2007 | Strip | 4 | 316SS Brass and Rubber | |
| 05 | 2003 | Socket | 4 | HR | |
| 04 | 4407 | O-ring | 2 | EPDM | 19x2.65 |
| 03 | 2005 | O-ring | 2 | EPDM | 56x3.55 |
| 02 | 2004.1 | End Plate | 2 | 2607SS | |
| 01 | 20022 | 25x1 Steel | | | Opt for white/blue |
| | 20021 | 25x1 Steel | 1 | FRP | |
| | 2002 | 25x10 Steel | | | |



1. DESIGN PRESSURE: 3000PSI6 SPRAAL.
2. DESIGN TEMPERATURE: 500°F166°C.
3. MIN. ALLOWABLE TEMPERATURE: 20°F-7°C.
4. WORKING MEDIA: WATER, PL. RANGE 3-11.
5. DIMENSIONS IN POUNDS: APPROX.
6. INTERNAL OPERATE PRESSURE: NOT TO EXCEED 125PSI0.86mpa.
7. PLEASE OPERATE IN ACCORDANCE WITH USER MANUAL.
8. FOR REFERENCE ONLY, NOT FOR CONSTRUCTION UNLESS CERTIFIED.
9. SPARE PARTS FOR JUST FOR CONSTRUCTION, SPECIFIC FORM OF THE SPARE PART.
10. DIMAND PREVAL, SUBJECT TO CHANGE WITHOUT NOTICE.
40. ALL PARTS CAN BE RECYCLED EXCEPT PER SHELL.

| Shell Number | L.O.A (mm/in) | S Span (mm/in) | Approx. assembly weight (kg/lb) |
|--------------|---------------|----------------|---------------------------------|
| 2514 | 482/19 | 200/7.9 | 2.4/5 |
| 2521 | 660/26 | 400/15.7 | 2.2/5 |
| 2540 | 1143/45 | 700/27.6 | 3/6.8 |

Marble ROV Industry Development Center



—

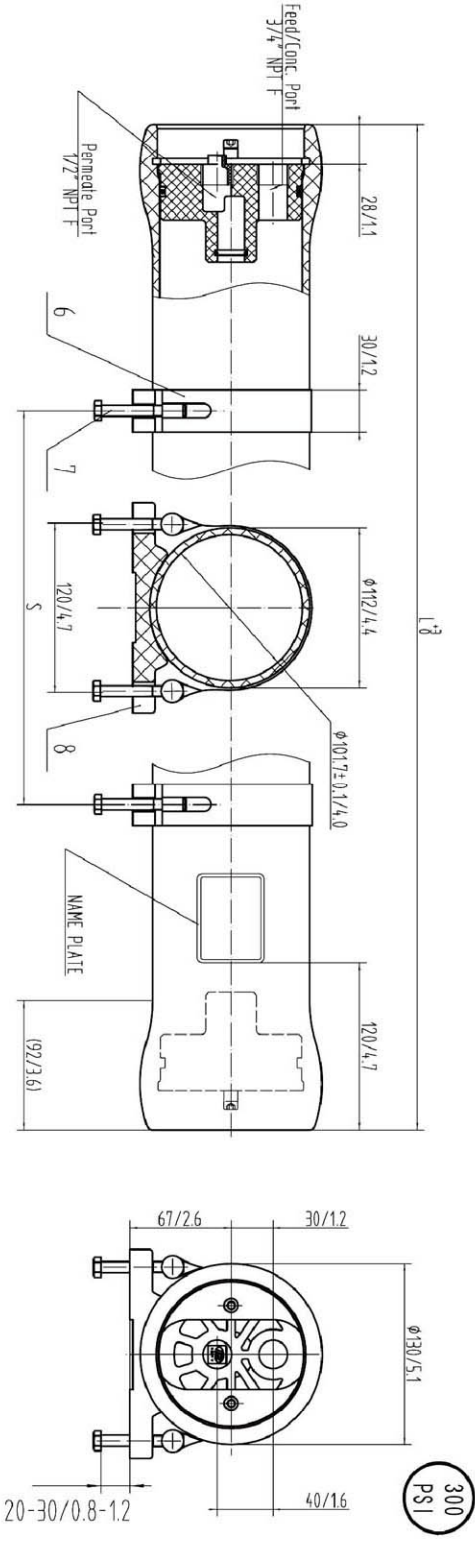
and

R25C1000E PRESSURE VESSEL

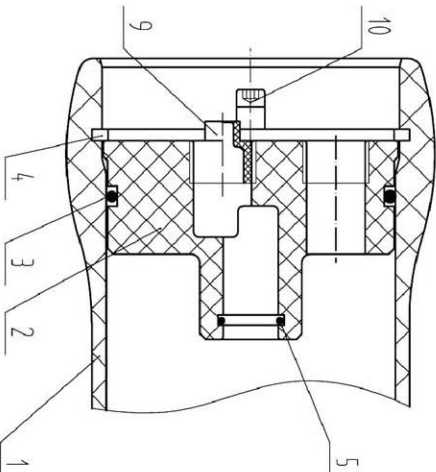
1

1

Spec sheets/drawings



| Ref. | Part Number | Description | Qty. | Material | Note |
|------|---------------------|------------------------|------|----------|----------------------|
| 10 | GB/T70.1 M6*20 | Locking Crescent Screw | 4 | 304SS | 4072 |
| 9 | 4093.1 | Plug | 1 | ABS | NPT 1/2" M |
| 8 | 4070 | Saddle | 2 | Rubber | |
| 7 | GB/T5782 M8*60 | Strap Screw | 4 | 304SS | 4009 |
| 6 | 4008 | Strap | 2 | 304SS | |
| 5 | 19x2.656 GB/T3452.1 | O-Ring | 2 | EPDM | 4007 |
| 4 | 4011 | Locking Crescent | 4 | 304SS | |
| 3 | 90x5.36 GB/T3452.1 | O-Ring | 2 | EPDM | 4002 |
| 2 | 4098.12 | End Plug | 2 | ABS | |
| 1 | 4098.7-9 | Pressure Shell | 1 | FRP | Do not blue or white |



| Shell Length Code | Shell Number | L (mm) | S (mm) | Approx. weight (Kg/Lb) |
|-------------------|--------------|------------|-----------|------------------------|
| 1 | 4098.7 | 1163/45.8 | 600/23.6 | 6.6/14.8 |
| 2 | 4098.8 | 2179/85.8 | 1200/47.2 | 10.2/22.5 |
| 3 | 4098.9 | 3195/125.8 | 2200/86.6 | 13.5/30.3 |

DESIGN

REVIEW

APPROVAL

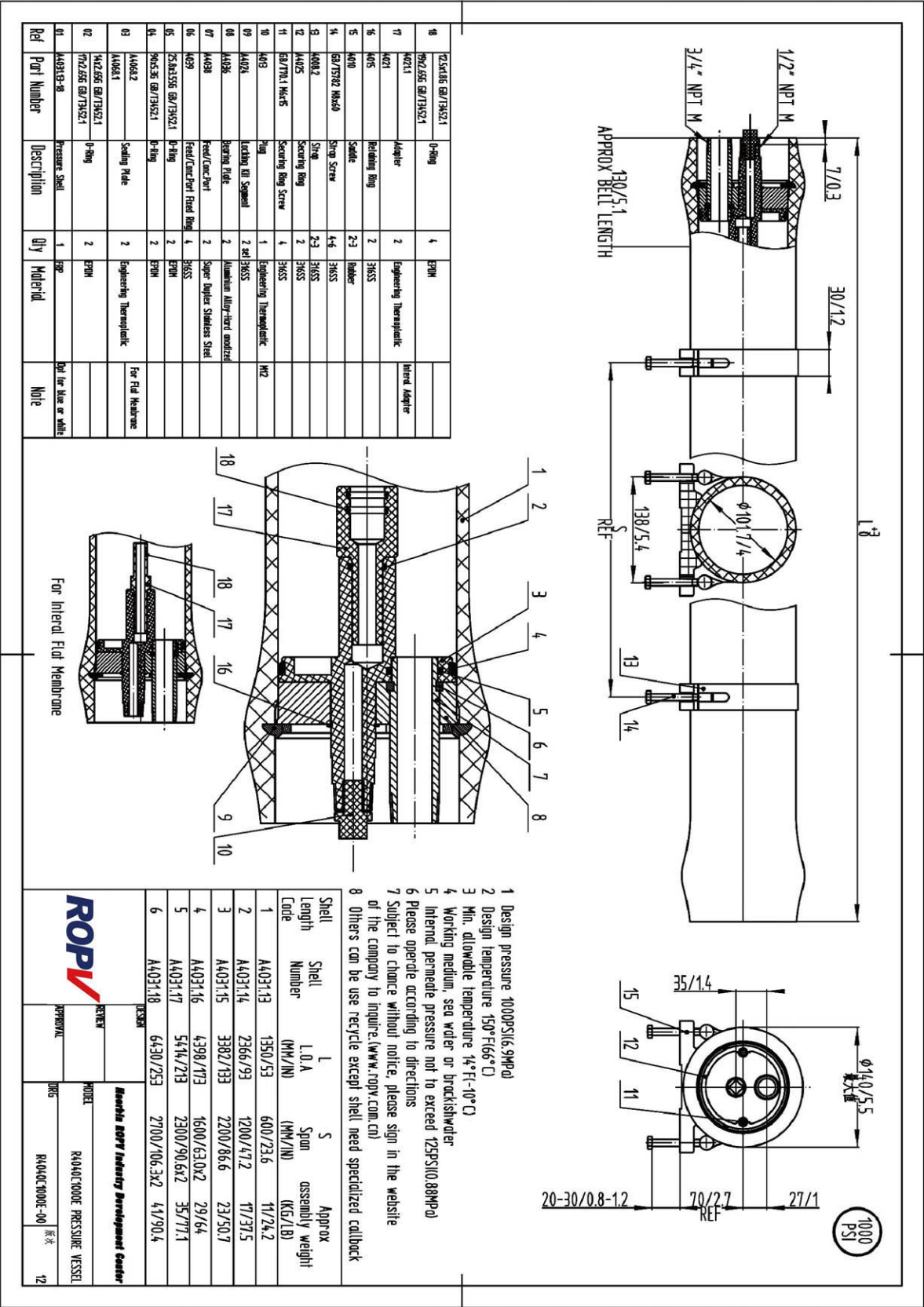
MODEL

NAME PLATE

REV

08

Spec sheets/drawings





5423 "G" Street, Chino, CA 91710, USA. Tel: 909-548-0339, Fax: 909-548-0863
Sales: sales@puregen.com Website: www.puregen.com

CALIFORNIA RESALE PERMIT

*Name of Purchaser: _____

*Address of Purchaser: _____

*I HEREBY CERTIFY: That I hold valid seller's permit NO. _____

issued pursuant to the Sales and Use Tax Law, That I am engaged in the business of selling:

That the tangible personal property described herein which I from: _____

Will be resolved by in the form of tangible personal property provided, however that in the event any of such property is used for any purpose other than retention, demonstration, or display while holding it for sale if the regular course of business it is understood that I am required by the Sales and Use Tax Law to report and pay tax, measured by the purchase price of such property or other authorized amount.

Description of property to be purchased: PUREGEN TECHNOLOGY INC. _____

*NAME OF PURCHASER

*SIGNATURE OF PURCHASER, PURCHASER'S EMPLOYEE OR AUTHORIZED REPRESENTATIVE

*PRINTED NAME OF PERSON SIGNING

*TITLE

*ADDRESS OF PURCHASER

TEL NO.

*DATE

*REQUIRED AREAS



5423 "G" Street, Chino, CA 91710, USA. Tel: 909-548-0339, Fax: 909-548-0863
Sales: sales@puregen.com Website: www.puregen.com

CREDIT APPLICATION

*COMPANY NAME _____ *PHONE _____
*FAX _____
*OWNER, PROPRIETOR
OR PARTNER NAME _____
*PRINCIPALES _____
*STREET ADDRESS _____
*CITY _____ *STATE _____ *ZIP CODE _____
*PRESENT LOCATION SINCE _____ *YEAR ESTABLISHED _____
*IS BUSSINESS INCORPORATED _____ *UNDER THE LAW OF WHAT STATE _____
*EMAIL _____

TRADE REFERENCES

*ACCOUNT NO. _____
*COMPANY NAME _____ *PHONE _____
*FAX _____
*ADDRESS _____ *STATE _____ *ZIP CODE _____

*ACCOUNT NO. _____
*COMPANY NAME _____ *PHONE _____
*FAX _____
*ADDRESS _____ *STATE _____ *ZIP CODE _____

*ACCOUNT NO. _____
*COMPANY NAME _____ *PHONE _____
*FAX _____
*ADDRESS _____ *STATE _____ *ZIP CODE _____

*BANK INFO _____ *PHONE _____
*ACCOUNT NO. _____ *FAX _____
*PLEASE CIRCLE BASIS ON WHICH YOU PAY 30 45 60 DAYS
I AUTHORIZE THE ABOVE MENTIONED BANK TO RELEASE THE INFORMATION.
*SIGNATURE _____ *DATE _____
TITLE _____

*REQUIRED AREAS



5423 "G" Street, Chino, CA 91710, USA. Tel: 909-548-0339, Fax: 909-548-0863
Sales: sales@puregen.com Website: www.puregen.com

FAX ORDER FORM

| | | | |
|-------------------------|------------------------|------------------------|----------------------|
| _____ * Company Name | _____ *Contact Name | _____ *Phone Number | _____ *Fax Number |
|-------------------------|------------------------|------------------------|----------------------|

If first time purchase, fax a copy of your resale permit with this order.

Ship to: _____

*Name _____

*Address _____

*City, State & Zip _____

*Email address _____

| Part # | Description | QTY | Price | Total |
|--------|-------------|-----|-------|-------|
| | | | | |
| | | | | |
| | | | | |
| | | | | |
| | | | | |
| | | | | |
| | | | | |
| | | | | |
| | | | | |
| | | | | |
| | | | | |
| | | | | |
| | | | | |
| Total | | | | |

Preferred Shipping Method Partial ship OK? Yes or No (Not including tax or freight)

() Pre-pay and add () Will call () Other _____

() Visa () Master Card *Card No.: _____

*Cardholder's Name _____ *Exp. Date: _____

*Signature _____

Signature attests financial responsibility, and agreement to pay our invoices in accordance W/ our terms.

* REQUIRED AREAS



This image shows a blank sheet of white paper with horizontal ruling lines. The lines are evenly spaced and extend across the width of the page. In the bottom right corner, there is a small green tab or piece of paper sticking out from under the main sheet.



PUREGEN TECHNOLOGY INC.

5423 "G" Street, Chino, CA 91710 USA

Tel: 909-548-0339 Fax: 909-548-0863

www.puregen.com

Email : sales@puregen.com