

# GAS - APPLIANCE - WATER

## Airgaps

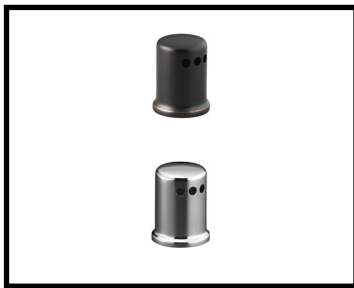


### DISHWASHER AIRGAP - IMPORT



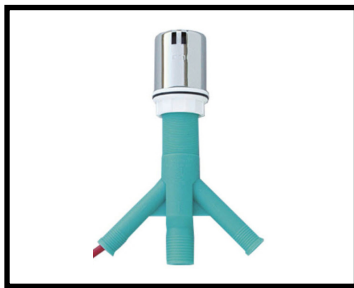
<u>PART NUMBER</u>	<u>ITEM DESCRIPTION</u>
AG5P	ECONOMY DW AIRGAP W/ POLYPROPYLENE BODY AND CHROME PLATED PLASTIC CAP

### REPLACEMENT AIRGAP COVER - UPC, IPC, NSF



<u>PART NUMBER</u>	<u>ITEM DESCRIPTION</u>
AGAP-COVER-ORB	AIRGAP COVER - OIL RUBBED BRONZE
AGAP-COVER-SS	AIRGAP COVER - BRUSHED STAINLESS

### DISHWASHER & RO AMERIGAP™



<u>PART NUMBER</u>	<u>ITEM DESCRIPTION</u>
AT52-RO	AMERIGAP 3-PORTED AIRGAP W/ 1/4" JG DRAIN - CODE APPROVED

#### Description

One inlet port accepts standard dishwasher hose (5/8" I.D.). Other small flow inlet port comes with quick connect type fitting that accepts 1/4" O.D. poly tubing from an undersink RO unit. Eliminates the need for an RO air gap faucet and also the illegal metal screw drive clamp. UPC®, IPC and NSF.

# GAS - APPLIANCE - WATER Airgaps

## DRAIN BOA™



<u>PART NUMBER</u>	<u>ITEM DESCRIPTION</u>
AT52-RO	AMERIGAP 3-PORTED AIRGAP W/ 1/4" JG DRAIN - CODE APPROVED

### Description

Inlet port directly accepts 3/8" and 1/2" O.D. poly tubing. Dual plumbing code listed sink tailpiece fitting. Comes with 2 plastic clamps and a stainless steel screw drive clamp as shown. Comes with a metal worm clamp for securing tubing to small port. UPC® and NSF.

## DISHWASHER AIRGAP - EASTMAN



<u>PART NUMBER</u>	<u>ITEM DESCRIPTION</u>
DAGE-EA	EASTMAN PLASTIC AIR GAP - BOX - METAL CHROME CAP

### Description

Blue body with brushed nickel cap. For Dishwasher & Disposer installation. UPC®.

## EASTMAN / EZ-FLO REPLACEMENT AIRGAP PARTS ONLY



<u>PART NUMBER</u>	<u>ITEM DESCRIPTION</u>
AGOCCP	EZ-FLO/EASTMAN CHROME PLATED AIR GAP OUTER CAP
AGOCBN	EZ-FLO/EASTMAN BRUSHED NICKEL AIR GAP OUTER CAP
AGPIC	EZ-FLO/EASTMAN PLASTIC INNER CAP FOR AIRGAP
AGPSW	EZ-FLO/EASTMAN PLASTIC SPACER WASHER FOR AIRGAP
AGRW	EZ-FLO/EASTMAN RUBBER WASHER FOR AIRGAP

# GAS - APPLIANCE - WATER

## Airgaps



PRECISION  
INSTALLATION  
PRODUCTS

### GAP-A-RO: 31-S (KIT S-A)



**PART NUMBER**

AGAP-31S-A

**ITEM DESCRIPTION**

AIRGAP GAP-A-RO 3/8" INLET X 3/8" OUTLET AIRGAP (CASE 50)

**Description**

Easy connection to inlet and outlet ports. Comes with 3/8" inlet and outlet ports. Unit designs lab tested at over 1/2 G.P.M. [2 Liter/minute] or more, depending on style of unit. Suggested usage approximately 1 to 16 oz/min. [30 to 500 ml/min]. Vertical wall mounting bracket and screws included. UPC®, IPC and NSF.

### GAP-A-RO: 31-S (KIT S-B)



**PART NUMBER**

AGAP-31S-B

**ITEM DESCRIPTION**

AIRGAP GAP-A-RO 1/4" INLET X 3/8" OUTLET AIRGAP

**Description**

Easy connection to inlet and outlet ports. Comes with 1/4" inlet and 3/8" outlet ports. Unit designs lab tested at over 1/2 G.P.M. [2 L/min] or more, depending on style of unit. Suggested usage approximately 1 to 16 oz/min [30 to 500 ml/min]. Vertical wall mounting bracket and screws included. UPC®, IPC and NSF.

### GAP-A-RO: 31-S (KIT S-C)



**PART NUMBER**

AGAP-31S-C

**ITEM DESCRIPTION**

AIRGAP GAP-A-RO INLINE AIRGAP WALL MOUNT

**Description**

Easy connection to inlet and outlet ports. Provides compact air gap unit and convenient mounting arrangement for RO type water coolers. Unit designs lab tested at over 1/2 G.P.M. [2 L/min] or more, depending on style of unit. Suggested usage approximately 1 to 16 oz/min [30 to 500 ml/min]. Vertical wall mounting bracket and screws included. UPC®, IPC and NSF.

### GAP-A-RO:31-S KIT(S-D)



**PART NUMBER**

AGAP-31S-D

**ITEM DESCRIPTION**

AIRGAP GAP-A-RO SINK MOUNT 1/4" INLET X 3/8" OUT

**Description**

Easy connection to inlet and outlet ports. Provides a convenient alternative to include a code listed air gap unit in the indirect drain piping; if a dispensing faucet is not needed or is to be remotely located or if installer prefers not to use an air gap style dispensing faucet. Unit designs lab tested at over 1/2 G.P.M. [2 L/min] or more, depending on style of unit. Suggested usage approximately 1 to 16 oz/min. [30 to 500 ml/min]. Mounts on top of sink. UPC®, IPC and NSF.

# GAS - APPLIANCE - WATER

## Airgaps

### GAP-IT: 61-D (KIT HF1)



**PART NUMBER**

AT52-RO

**ITEM DESCRIPTION**

AMERIGAP 3-PORTED AIRGAP W/ 1/4" JG DRAIN - CODE APPROVED

**Description**

Designed to fit into recessed washing machine outlet boxes w/ 2" standpipes. Fits onto top of exposed 2" standpipes. Units feature a flow straightener to quiet and smooth out turbulent flow and splatter shields to eliminate any water droplets that may splatter out of either air gap opening. Units designed to allow space for washer drain hook or soft rubber washer hose to share standpipe with Gap-It. Multiple air gap openings exceed the code mandated minimum of at least one (1)" vertical opening. Comes with mounting base for 2" pipe. UPC®, IPC and NSF.

### GAP-IT: 61-S (KIT HF2)



**PART NUMBER**

AGAP-612

**ITEM DESCRIPTION**

AIRGAP GAP-IT INLINE HIGH FLOW AIRGAP FOR 1-1/2" PIPE

**Description**

Designed to fit into recessed washing machine outlet boxes w/ 1 1/2" standpipes. Units feature a flow straightener to quiet and smooth out turbulent flow and splatter shields to eliminate any water droplets that may splatter out of either air gap opening. Units designed to allow space for washer drain hook or soft rubber washer hose to share standpipe with Gap-It. Multiple air gap openings exceed the code mandated minimum of at least one (1)" vertical opening. Comes with vertical wall mounting bracket and screws. UPC®, IPC and NSF.

### MR.DRAIN



**PART NUMBER**

AMD-10A

**ITEM DESCRIPTION**

AIRGAP MISTER DRAIN AIRGAP USED WITH STANDPIPE

**Description**

Fits 1 1/2" or 2" standpipes. Unit housing length approx. 5 1/2" (13.97 cm). Recommended usage 1 to 7 gal/min (3.7 to 26.5 L/min). Tested at 15 gal/min (56.8 L/min). Allows soft rubber washer hose or washer metal drain hook to share standpipe with other Air Gap units. Inlet port fits 1/2" SCH 40 PVC slip fittings or special couplings. Provides more than twice the code-required minimum air gap opening. Can be mounted at 3 different levels. UPC®, IPC and NSF.

# GAS - APPLIANCE - WATER

## Airgaps



PRECISION  
INSTALLATION  
PRODUCTS

## GAP-CAP



### PART NUMBER

AGAP-CAP

### ITEM DESCRIPTION

AIRGAP GAP-CAP-MODEL 8500- MOUNTS ON 1-1/2" - 2" PIPE (METAL OR PLASTIC)

### Description

Ideal space-saving air gap. Twin inlet port: Larger port is 1/2" slip that also directly accommodates 5/8" O.D. poly tubing. Smaller RO port directly accepts 3/8" O.D. poly tubing. Includes inlet elbow with flow straightener 5 to 7 gal/min. Fits 1 1/2" & 2" standpipes. UPC®, IPC and NSF.

## DUAL BARB ELBOW



### PART NUMBER

AG170-008

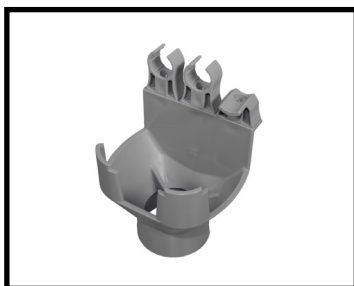
### ITEM DESCRIPTION

AIRGAP DUAL BARB ELBOW - FITS 1/2" & 5/8" ID POLY TUBE - FITS THE AMD-10A & AGAP-CAP

### Description

Fits Mr. Drain and Gap-Cap™ units.

## GAP-A-DRAIN UNIVERSAL AIRGAP



### PART NUMBER

AG180-002

### ITEM DESCRIPTION

AIRGAP GAP-A-DRAIN UNIVERSAL AIRGAP - FLOOR DRAINS, 2" AND 1-1/2" STAND PIPES

### Description

Fits 1 1/2" stand pipe with reducer or 2" standpipes. Accommodates discharge rates of up to 35 gal/min. Design lab tested at 15 gal/min. Fits up to three 3/4" PVC or copper drain pipes and two Mr. Drains. Provides required airgap to comply with ASME standard. Easily attaches to floor drains using metal hook (included) Can be mounted on floor drain, 2", and 1 1/2" stand pipes. UPC®, IPC and NSF.

# GAS - APPLIANCE - WATER Airgaps

## GAP-A-FLO



**PART NUMBER**

AGAF-211

**ITEM DESCRIPTION**

AIRGAP GAP-A-FLO INLINE AIRGAP WITH MALE & FEMALE THREADS

**Description**

Unit approximately 8" long. Provides an in-line air gap, usually installed in the last 5 ft (1.5 meters) of the indirect drain piping and must be in the down leg of the drain line piping. Unit can be tilted at any angle (down as low as 45° angle) when installing if needed, (window opening on top side). Molded clamp groove plus included "Jiffy Clip" enable easy vertical wall mounting. Unique design incorporates a rotatable splash guard/splatter shield, to eliminate splatter of water droplets out of either air gap opening. Multiple air gap openings far exceed the code mandated minimum of (1)" vertical. All noted threads are American NPT threads. Unit design lab tested at 15 gal/min (56.8 L/min). Recommended usage up to 7 gal/min (26.5 L/min). UPC®, IPC and NSF.

## HYDROTECH AIRGAP



**PART NUMBER**

AG3001

**ITEM DESCRIPTION**

HYDROTECH WALL MOUNTED AIRGAP